

# COLLEGE *of* CHARLESTON

## *Planning and Reference Fact Book 2013*

Prepared by the  
Office of Institutional Research and Planning

James T. Posey ([poseyjt@cofc.edu](mailto:poseyjt@cofc.edu))  
Associate Vice President

Michelle L. Eleazer Smith ([smithm@cofc.edu](mailto:smithm@cofc.edu))  
Associate Director

Lauren Schoenheit ([schoenheitl@cofc.edu](mailto:schoenheitl@cofc.edu))  
Sr. Data and Reporting Analyst

Sana Ndon ([sbndon@cofc.edu](mailto:sbndon@cofc.edu))  
Data and Reporting Analyst

Mary Person ([personm@cofc.edu](mailto:personm@cofc.edu))  
Business Intelligence Analyst

Susanna Weathers ([sweather@cofc.edu](mailto:sweather@cofc.edu))  
Office Manager

College of Charleston  
66 George Street  
Charleston, SC 29424  
Phone: (843) 953-5708  
Facsimile: (843) 953-7786

World Wide Web Address: <http://irp.cofc.edu/>



# COLLEGE of CHARLESTON

---

## INSTITUTIONAL RESEARCH AND PLANNING

The College of Charleston's *Planning and Reference Fact Book* is a structured presentation of information about the university that is frequently requested by students, faculty, staff, trustees, alumni, and others. Being responsible for the development and maintenance of data resources to support planning, budgeting, institutional effectiveness, compliance, and policy-making, the Office of Institutional Research and Planning developed this Planning and Reference Fact Book in 1996, as an enhanced and restructured version of the previously-produced Fact Book.

This document captures student information through fall semester 2012 and fiscal year data through June 30, 2012. Some pages may contain data as recent as spring 2013. Institutional Research and Planning appreciates the efforts of all involved in producing this information.

An online version of the Fact Book can be found at <http://irp.cofc.edu/facts-and-publications/PRFB-Main-Menu.php>. The online version is updated dynamically each semester and therefore contains the most recently updated reports.

We invite your comments regarding the 2012-2013 Planning and Reference Fact Book and welcome suggestions for future editions.

Please contact us with any questions and comments.

Office of Institutional Research and Planning  
66 George Street  
Randolph Hall, Room 106  
843-953-5708  
email: [instres@cofc.edu](mailto:instres@cofc.edu)  
website: <http://irp.cofc.edu/>



## TABLE OF CONTENTS

### GENERAL INFORMATION

Statement of Purpose	9
Statement of Institutional Goals	10
College of Charleston Board of Trustees	11
Presidents of the College of Charleston	13
Administrative Officers, 2012-2013	14
Organizational Structures	16
Personnel Roster, November 2012	13
Alumni, Fall 2012	24

### THE FACULTY

Roster Faculty, Fall 2008-Fall 2012	27
Average Nine Month Salaries of Instructional Roster Faculty, 2009-2010 to 2012-2013	28
Profile of Instructional Roster Faculty by Department, 2012-2013	29
Student Credit Hours by Faculty Department, Fall 2012	30
Student Credit Hours by Course Discipline, Fall 2012	31
Student Credit Hours by School, Department, and Subject, Fall 2012	34

### ADMISSIONS

Application Summary, 2011-2013	39
Average Combined SAT Scores, 2008-2013	40
Average SAT Scores of SC First-Time Freshmen, Fall 2012	41
Summary of Enrolled Freshmen by Rank in Class, 2008-2012	42
South Carolina High Schools Contributing Five or More Entering Freshmen, Fall 2012	43

### DEMOGRAPHICS

Student Headcount, 2008-2009 to 2012-2013	47
Undergraduate Headcount, 2008-2009 to 2012-2013	48
Graduate Headcount, 2008-2009 to 2012-2013	48
FTE Students, 2008-2009 to 2012-2013	49
Undergraduate FTE Students, 2008-2009 to 2012-2013	50
Graduate FTE Students, 2008-2009 to 2012-2013	50
Student Headcounts by Class Comparison of Fall 2008 and Fall 2012	51
Full-Time/Part-Time Students by Class, Fall 2008-Fall 2012	52
Gender Distribution of Students by Class, Fall 2008-Fall 2012	53
Race Distribution of Students by Class, Fall 2008-Fall 2012	54
Age Distribution by Type of Student, Fall 2012	55
Geographic Distribution of Students, Fall 2008-Fall 2012	56
South Carolina Geographic Distribution, Fall 2012	57

United States Geographic Distribution, Fall 2012	58
Geographic Distribution of Students by State and Country, Fall 2012	59
World Geographic Distribution, Fall 2012	60
Summer Sessions, Headcount Enrollment and FTE Students, 2006-2012	61
<b>GRADUATION AND RETENTION</b>	<b>63</b>
Retention Status of New Freshmen, Fall 2003-Fall 2012	65
Retention Status of African American Freshmen Only, Fall 2003-Fall 2012	66
First-Year Retention Rates Full-Time Freshmen, Fall 2003-Fall 2012	67
Graduation Rates of New Full-Time Freshmen, Fall 2003-Fall 2008	68
Retention Status of New Transfers, Fall 2003-Fall 2012	69
First-Year Retention Rates, Full-Time Transfers, Fall 2006-Fall 2012	70
<b>ACADEMICS</b>	<b>71</b>
Academic Subject Areas and Degrees Offered, Spring 2012	73
Average Credit Hour Load, Fall 2008-Fall 2012	74
Undergraduate and Graduate Majors, Fall 2012	75
Number of Undergraduate Students per Class by Discipline, Fall 2008-Fall 2012	76
Number of Graduate Students per Class by Discipline, Fall 2008-Fall 2012	78
Total Student Enrollment, Undergraduate Level Courses, Fall 2008-Fall 2012	79
Total Student Enrollment, Graduate Level Courses, Fall 2008-Fall 2012	81
Mean Cumulative GPR by Class, Gender, Major, Fall 2008-Fall 2012	82
Number of Undergraduate Courses (Sections) Taught, Fall 2008-Fall 2012	84
Number of Graduate Courses (Sections) Taught, Fall 2008-Fall 2012	86
Degrees Awarded by Major, 2007-2008 to 2011-2012	87
<b>FINANCIAL PROFILES</b>	
Comparison of Tuition & Required Fees of Public Senior Institutions for Academic Year 2012-13	91
Tuition & Required Fees for Academic Year 2012-13, Public Senior Institutions	91
A Comparison of Distribution of Appropriated Funds Based on the Commission of Higher Education Appropriations Formula with Actual Expenditures of College of Charleston Appropriated Funds and Student Fees, 2010-11 and 2011-2012	92
Summary of Financial Aid Awards, 2008-09, 2009-10 and 2010-11	93
<b>FACILITIES</b>	<b>95</b>
The Marlene and Nathan Addlestone Library Statistics, 2008-2012	97
Residence Hall Occupancy, 2003-2004 to 2011-2012	98
<b>INDEX</b>	<b>99</b>

# *General Information*





**College of Charleston Mission Statement  
(Statement of Purpose)**

The College of Charleston is a state-supported comprehensive institution providing a high quality education in the arts and sciences, education and business. Consistent with its heritage since its founding in 1770, the College retains a strong liberal arts undergraduate curriculum. Located in the heart of historic Charleston, it strives to meet the growing educational demands primarily of the Low Country and the State and, secondarily, of the Southeast. A superior quality undergraduate program is central to the mission of the College.

The College of Charleston seeks applicants capable of successfully completing degree requirements and pays particular attention to identifying and admitting students who excel academically. The College of Charleston serves a diverse student body from its geographical area and attracts students from national and international communities. The College provides students a community in which to engage in original inquiry and creative expression in an atmosphere of intellectual freedom. This community, founded on the principles of the liberal arts tradition, provides students the opportunity to realize their intellectual and personal potential and to become responsible, productive members of society.

In addition to offering a broad range of baccalaureate degree programs, the College currently provides an increasing number of masters' degree programs, which are compatible with the community and the state. As a prominent component of the state's higher education system, the College encourages and supports research. Its faculty are important sources of knowledge and expertise for the community, state, and nation. Additionally, the College provides an extensive credit and non-credit continuing education program and cultural activities for residents of the Low country of South Carolina.

*This Mission Statement (also called the Statement of Purpose) has been approved or revised by the Board of Trustees of the College of Charleston on March 12, 1986; January 16, 1991, February 15, 1994; and on July 13, 2006.*

## College of Charleston Statement of Institutional Values and Goals

In order to achieve its envisioned future the College has identified the following goals that will enable it to combine the personalized, student focus of a small teaching institution with the breadth of curricular, co-curricular and extracurricular opportunities of a research university.

### Core Purpose

To pursue and share knowledge through study, inquiry and creation in order to empower the individual and enrich society

### Values

- **Academic excellence** that furthers intellectual, creative, ethical and social development through a broad range of programs centered on the liberal arts and sciences
- **Student-focused community** that embraces mutual respect, collaboration and diversity for the welfare of the individual and the institution
- **The history, traditions, culture and environment of Charleston and the Lowcountry** that foster distinctive opportunities for innovative academic programs and relationships that advance our public mission in the city of Charleston, the state of South Carolina and the world.

### Goals

1. Provide students a highly personalized education based on liberal arts and sciences core and enhanced by opportunities for experiential learning.
2. Develop or enhance nationally recognized undergraduate, graduate and professional programs in areas that take advantage of our history, culture and location in Charleston and contribute to the well-being of the region.
3. Provide students the global and interdisciplinary perspectives necessary to address the social, economic, environmental, ethical, scientific and political issues of the 21<sup>st</sup> century.
4. Establish and promote a vibrant campus-life atmosphere dedicated to education of the whole person through integration of curricular and co-curricular or extracurricular activities.
5. Achieve financial security by creating a new financial model for the College of Charleston.

*This statement was approved by the State College Board of Trustees in October, 2009 and revised in the strategic plan in February, 2013.*

**College of Charleston Board of Trustees**

**2012-13**

**Mr. Donald H. Belk**

34 Twin Oaks Lane  
Isle of Palms, South Carolina 29451

**Mr. John H. Busch**

840 Mallard Lakes Drive  
Lexington, South Carolina 29072

**Dr. L. Cherry Daniel**

P.O. Box 31414  
Charleston, South Carolina 29417

**Mr. James F. Hightower**

Hightower Construction Company  
525 East Bay Street, Suite 202  
Charleston, South Carolina 29403

**Mrs. Marie M. Land**

2 Pinestraw Lane  
Manning, South Carolina 29102

**Mr. Lawrence R. Miller**

Independence National Bank  
P.O. Box 1776  
Greenville, South Carolina 29602

**Mr. Gregory D. Padgett (Chair)**

Fennell Holdings, Inc.  
5264-B International Blvd, Suite 100  
North Charleston, South Carolina 29418

**Mr. Daniel Ravenel**

Daniel Ravenel Sotheby's International Real Estate  
33 Broad Street  
Charleston, South Carolina 20401

**Mr. Joseph F. Thompson, Jr.**

455 Rice Hope Drive  
Mt. Pleasant, South Carolina 29464

**Mr. J. Philip Bell (Secretary)**

P.O. Box 3181  
Greenwood, South Carolina 29648

**Mrs. Demetria Noisette Clemons**

209 Penrose Drive  
Columbia, SC 29203

**Mr. Frank M. Gadsden**

Clover Community Bank  
124 North Main Street  
Clover, South Carolina 29710

**Mr. William D. Johnson**

2128 Timberlane Drive  
Florence, SC 29506

**Mr. G. Lee Mikell (Vice Chair)**

SCANA Corporation  
220 Operation Way, Building D  
Cayce, South Carolina 29033-3701

**Mrs. Annaliza Oehmig Moorhead**

906 East Calhoun St.  
Anderson, South Carolina 29621

**Dr. Toya D. Pound**

500 Park Crossing Street  
Daniel Island, SC 29492

**Mr. Jeffrey M. Schilz**

17 Braiden Manor Road  
Columbia, SC 29209

**Mr. John B. Wood, Jr.**

First Citizens Bank  
P. O. Box 3028  
Greenville, South Carolina 29602-9773

**College of Charleston Board of Trustees**

**2013-14**

**Mr. Donald H. Belk**  
34 Twin Oaks Lane  
Isle of Palms, South Carolina 29451

**Ms. Demetria Noisette Clemons**  
209 Penrose Drive  
Columbia, South Carolina 29203

**Mr. Frank M. Gadsden (Secretary)**  
202 Pressley Street  
Clover, South Carolina 29710

**Ms. Henrietta U. Golding**  
McNair Law Firm  
P.O. Box 336  
Myrtle Beach, South Carolina 29578

**Ms. Pansy King-Reid**  
130 Melbourne Drive  
Fort Mill, South Carolina 29708

**Ms. Annaliza Oehmig Moorhead**  
906 East Calhoun St.  
Anderson, South Carolina 29621

**Dr. Toya D. Pound**  
500 Park Crossing Street  
Daniel Island, SC 29492

**Ms. Renee Buyck Romberger**  
1 Buckland Way 29615  
Greenville, South Carolina

**Edward L. Thomas**  
1019 Thornehill Drive  
Anderson, South Carolina 29621

**Ms. Ricci Land Welch**  
6266 Highway 260  
Manning, South Carolina 29102

**Mr. John Hartnett Busch**  
435 Greengarden Drive  
Chapin, South Carolina 29036

**Dr. L. Cherry Daniel**  
P.O. Box 31414  
Charleston, South Carolina 29417

**Ms. Renee Bodie Goldfinch**  
Boyd Goldfinch Law Firm  
P.O. Box 15358  
Myrtle Beach, South Carolina 29587

**Mr. David M. Hay**  
173 Broad Street  
Charleston, South Carolina 29401

**Mr. G. Lee Mikell (Vice Chair)**  
2036 Shady Lane  
Cayce, South Carolina 29206

**Mr. Gregory D. Padgett (Chair)**  
Fennell Holdings, Inc.  
5264-B International Blvd, Suite 100  
North Charleston, South Carolina 29418

**Mr. Daniel Ravenel**  
68 Broad Street  
Charleston, South Carolina 29401

**Mr. Jeffrey M. Schilz**  
17 Braiden Manor Road  
Columbia, SC 29209

**Mr. Joseph F. Thompson, Jr.**  
455 Rice Hope Drive  
Mt. Pleasant, South Carolina 29464

**Mr. John B. Wood, Jr.**  
1 Rockingham Road  
Greenville, South Carolina 29607

**Presidents of the College of Charleston**

<b>Name</b>	<b>Term</b>
Robert Smith	1790-1797
Thomas Bee, Junior	1798-1805
George Buist	1806-1808
Elijah Dunham Rattoone	1810-1810
Nathaniel Bowen	1823-1824
Jasper Adams	1825-1826
Nathaniel Bowen	1827-1828
Jasper Adams	1828-1836
William Theophilus Brantly	1838-1844
William Peronneau Finley	1845-1857
Nathaniel Russell Middleton	1857-1880
Henry Elliott Shepherd	1882-1897
Harrison Randolph	1897-1945
George Daniel Grice	1945-1966
Walter Raleigh Coppedge	1966-1968
Theodore Sanders Stern	1968-1979
Edward McDaniel Collins, Junior	1979-1985
Harry McKinley Lightsey, Junior	1985-1992
Alexander Mullings Sanders, Junior	1992-2001
Leo I. Higdon, Junior	2001-2006
Conrad Festa	2006-2007
P. George Benson	2007-present

College of Charleston  
Administrative Officers  
2013-2014

**President**

Exec. Secretary, Board of Trustees, & V.P., College Projects  
Exec. V.P., Business Affairs  
Exec. V.P., External Relations  
Exec. V.P., Institutional Advancement  
Exec. V.P., Student Affairs  
Provost & Exec. V.P., Academic Affairs  
Senior V.P., Legal Affairs  
Associate V.P., for Diversity  
Director, Athletics  
Chief of Staff & Senior Policy Advisor  
Director, Executive Communications

**Provost & Exec. V.P. Academic Affairs**

Sr. Vice Provost for Academic Affairs  
Associate Provost for Curriculum and Academic Administration  
Associate Provost for Faculty Affairs  
Associate Provost for International Education  
Director, Summer School Programs  
Director, Research and Grants Administration  
Director, Undergraduate Research and Creative Activities  
Dean, Graduate School  
Interim Dean, Libraries  
Avery Research Center  
Marine Resources Library  
Technical Services  
Public Services  
John Rivers Communication Museum

Dean, School of the Arts  
Dean, School of Business  
Dean, School of Education, Health, and Human Performance  
Dean, School of Humanities and Social Sciences  
Dean, School of Languages, Cultures and World Affairs  
Dean, School of Sciences & Mathematics  
Dean, CofC North  
Interim Director, Lowcountry Graduate Center  
Associate V.P., Enrollment Planning  
Director, Financial Assistance and Veterans Affairs  
Assistant V.P., Admissions and Enrollment Management  
Executive Director, Admissions Operations and Information  
Registrar

Associate V.P. for the Academic Experience  
First Year Experience  
Center for Academic Advising & Planning  
New Student Programs  
Center for Student Learning  
Undergraduate Academic Services  
Assoc. V.P. of Institutional Effectiveness and Planning  
Director, Academic Assessment and Planning

Dean, Honors College  
Associate V.P., Office of Institutional Research and Planning  
Director, Strategic Initiatives

**Exec. V.P. Student Affairs**

Assistant V.P., Student Affairs  
Director, Upward Bound and Pre-College Programs  
Program Coordinator, McNair Scholars  
Coordinator, Technology  
Director, Center for Civic Engagement  
Director, Multicultural Student Programs and Services  
Dean of Students and Assistant V.P.  
Director, Victim Services  
Director, Center for Disabilities Services  
Director, Student Life  
Director, Career Services  
Director, Counseling & Substance Abuse Services  
Director, Student Conduct & Case Management

Director, Health Services  
Assistant V.P. and Director, Higdon Student Leadership Center  
Director, Campus Recreation Services  
Director, Greek Life

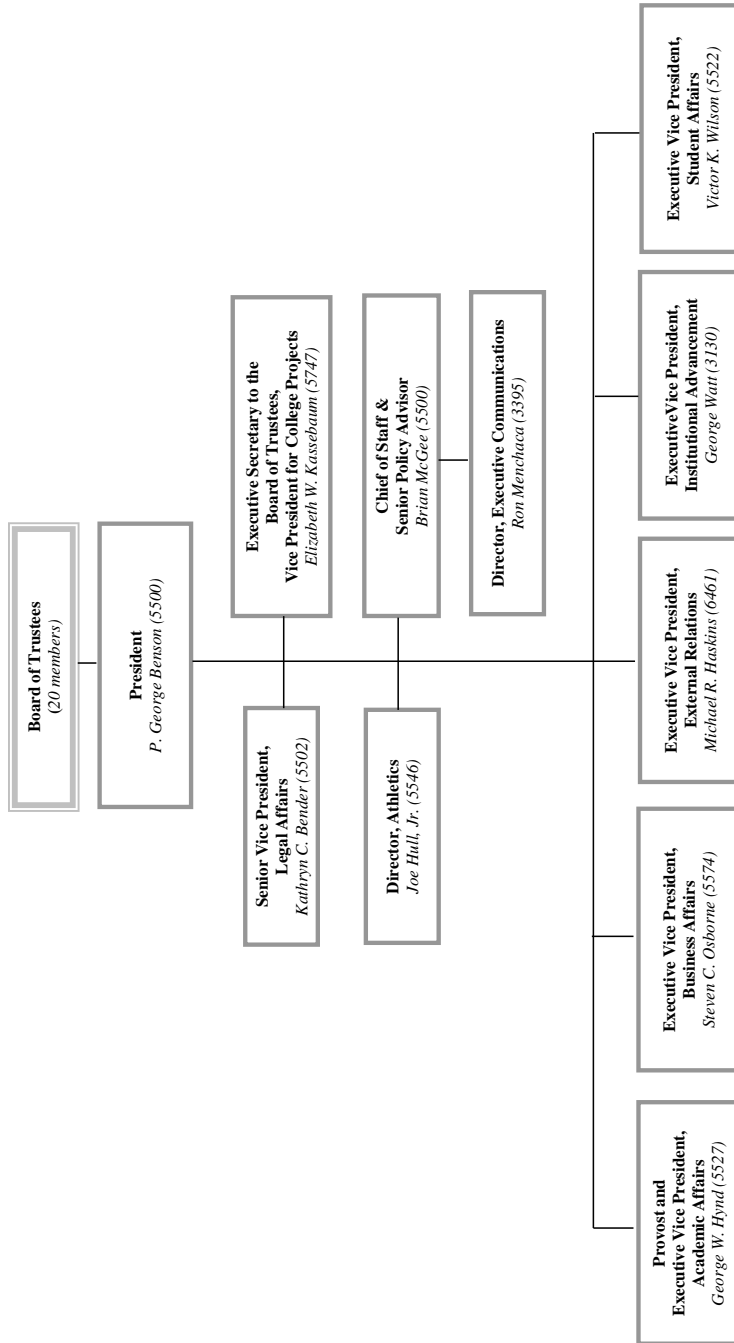
Dean, Residence Life and Housing  
Director, Residence Life

Assistant V.P. and Director, Public Safety  
Director, Public Safety

P. George Benson  
Elizabeth W. Kassebaum  
Steven C. Osborne  
Michael R. Haskins  
George Watt  
Victor K. Wilson  
George W. Hynd  
Kathryn C. Bender  
John Bello-Ogunu  
Joe Hull, Jr.  
Brian McGee  
Ron Menchaca  
George W. Hynd  
Beverly E. Diamond  
Lynne E. Ford  
Deanna M. Caveny  
Andrew M. Sobiesuo  
C. Michael Phillips  
Susan Anderson Rivaleau  
Trisha Folds-Bennett  
Amy T. McCandless  
John W. White  
Patricia W. Lessane  
Helen A. Ivy  
Katina Strauch  
James Williams III  
Rick Zender  
Valerie B. Morris  
Alan T. Shao  
Frances C. Welch  
Jerald L. Hale  
David J. Cohen  
Michael J. Auerbach  
Godfrey Gibbison  
Sue A. Sommer-Kresse  
Donald C. Burkard  
Donald R. Griggs  
Jimmie Foster, Jr.  
Suzette Stille  
Catherine C. Boyd  
Kay H. Smith  
Christopher A. Korey  
Alison R. Hopkins  
Melinda Miley  
T. Steve Gibson  
Deborah A. Vaughn  
Penelope W. Brunner  
Karin W. Roof  
Trisha Folds-Bennett  
James T. Posey  
Deni Mitchell  
Victor K. Wilson  
Vacant  
Talim Lassane  
Carrie Ben-Yisrael  
Marnette Bowen  
Stephanie Visser  
Teresa Smith  
Jeri O. Cabot  
Robin F. LaRocque  
Deborah F. Mihal  
Susan Payment  
Denny Ciganovic  
Frank C. Budd  
Vacant  
Jane Reno-Munro  
Michael Duncan  
Eugene D. Sessoms  
Montrez Greene  
John Campbell  
Melantha Ardrey  
Paul V. Verrecchia  
Robert Reese

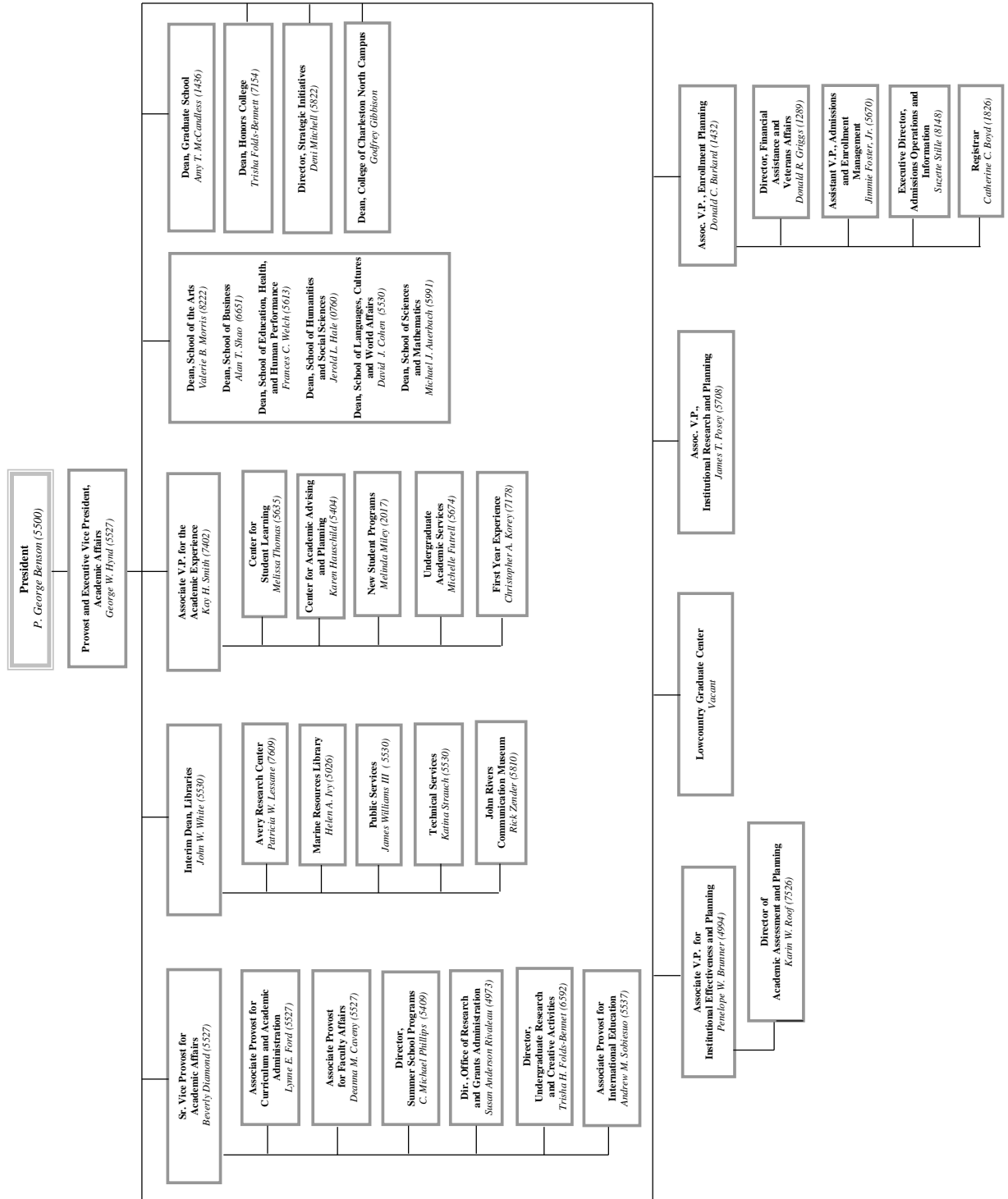
Director, Fire & EMS	Richard Krantz
Director, Security Technical Services	Vacant
<b>Exec. V.P. External Relations</b>	Michael R. Haskins
Sr. Director, Media Relations	Michael A. Robertson
Director, Media Relations	Melissa R. Whetzel
Director, Television and Video Production	Timothy D. Fennel
Online Video Producer	Michael J. Heagerty
Multimedia Artist	Dave Brown
Director of Communications for Institutional Advancement	Jennifer L. Lorenz
Sr. Director, College Publications	Mark E. Berry
Director, College Publications	Alicia B. Lutz
Associate Director, College Publications	Jason P. Ryan
Art Director	Holly F. Thorpe
Art Director	Alfred M. Hall
Photographer	Leslie R. McKellar
Sr. Director, Marketing for Academics & Admissions	Marcia H. White
Director of Marketing for Academics & Admissions	Dan Dickison
Art Director	Kris Adams
Director, Strategic Communications	Stanfield Gray
Director, Advertising and Brand Management	Meredith B. English
Art Director	Erin R. Perkins
Director, Electronic Marketing	Larry W. Stoudenmire
Associate Director, Electronic Marketing	Charlie Stinchfield
<b>Exec. V.P. Business Affairs</b>	Steven Osborne
Sr. V.P., Technology, & Chief Information Officer	Robert E. Cape
Director, Network and Programming Services	Marcia K. Moore
Director, Systems & Infrastructure Services	Deborah Johnson
Director, Teaching, Learning, Technology	Monica H. Lavin
Director, Information Services	Jie Zhu
Director, Web Strategies	Andrew Bergstrom
Director, IT Finance & Planning	Jeremy Clement
Director, Information Security	Ken Beasley
Director, Support Services	Philip M. Paradise
Manager, Student Support	Tracey Bates
V.P., Facilities Planning	Monica R. Scott
Manager, Grounds	Paty Cowden
V.P., Fiscal Services	Priscilla D. Burbage
Assoc. V.P., Budgeting & Payroll Services	Samuel B. Jones
Controller	Dawn E. Willan
Treasurer	David G. Katz
Internal Auditor	Gail Long
Director, Government Relations	Shirley R. Hinson
Director, Physical Plant	John Cordray
Director, Human Resources	Ed Pope
Director, Auxiliary Services	Janet J. Brewton
Director, Food Services	Michelle Crowe
Manager, Bookstore, & B&N Contractor	Stephen Jones
Manager, Parking Services	Sonya B. Allen
Manager, Cougar Card	Barbara S. Hallberg
Director, Copy Center	Cheryl Conner
Director, Mail Services	Kenny Greene
Director, Sottile Theatre	Jeremiah W. Lewis
Director, Procurement	Wendy E. Williams
Director, Central Stores	Roger L. Brown
Director, Environmental Health & Safety	Randy L. Beaver
<b>Exec. V.P. Institutional Advancement &amp; Exec. Dir., CofC Foundation</b>	George Watt
V.P., Development	Christopher Tobin
Assoc. V.P. of Development	Cathryn Ann Mahon
Regional Director of Development	Sara A. Cook
Director of Development, School of Business	Colby G. Rankin
Director of Annual Giving Programs	Laurie A. Soenen
Director of Gift Planning	David Masich
Director of Corporate and Foundation Relations	Denise Ciccarelli
Director of Stewardship and Donor Relations	Carin Jorgensen
Director of Research and Prospect Management	Jeanne Sharp
Director, Alumni Communications & Exec. Sec., Alumni Assoc.	Karen B. Jones
Director, Alumni Relations	John Huguley
Director, Financial Services	K. Tracey Bible
Director, Advancement Services	Marijana Boone
Director, Foundation Property Management & Special Projects	W. Barnwell Holt

**College of Charleston  
Organizational Structure**

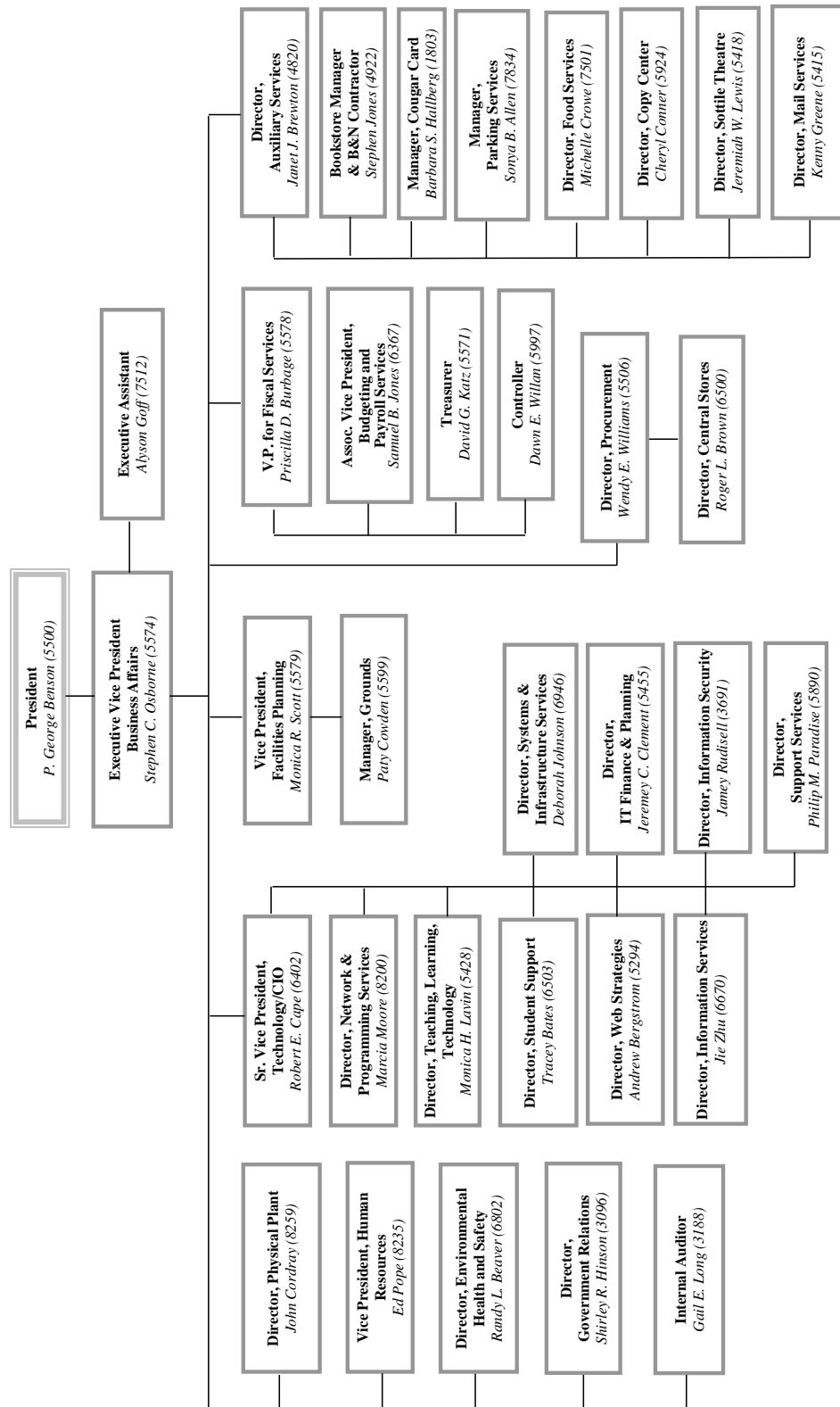




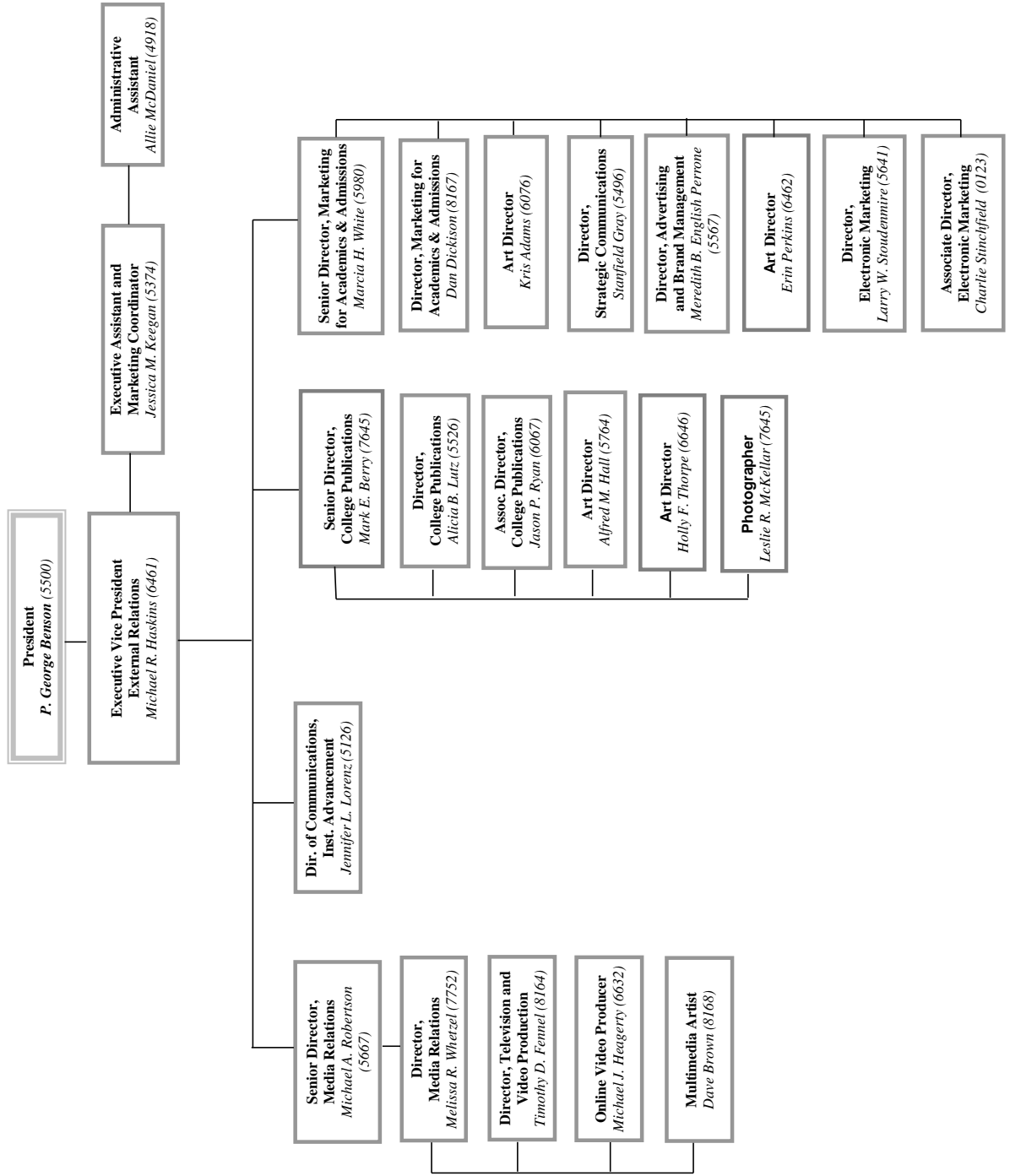
**College of Charleston**  
Organizational Structure  
(continued)



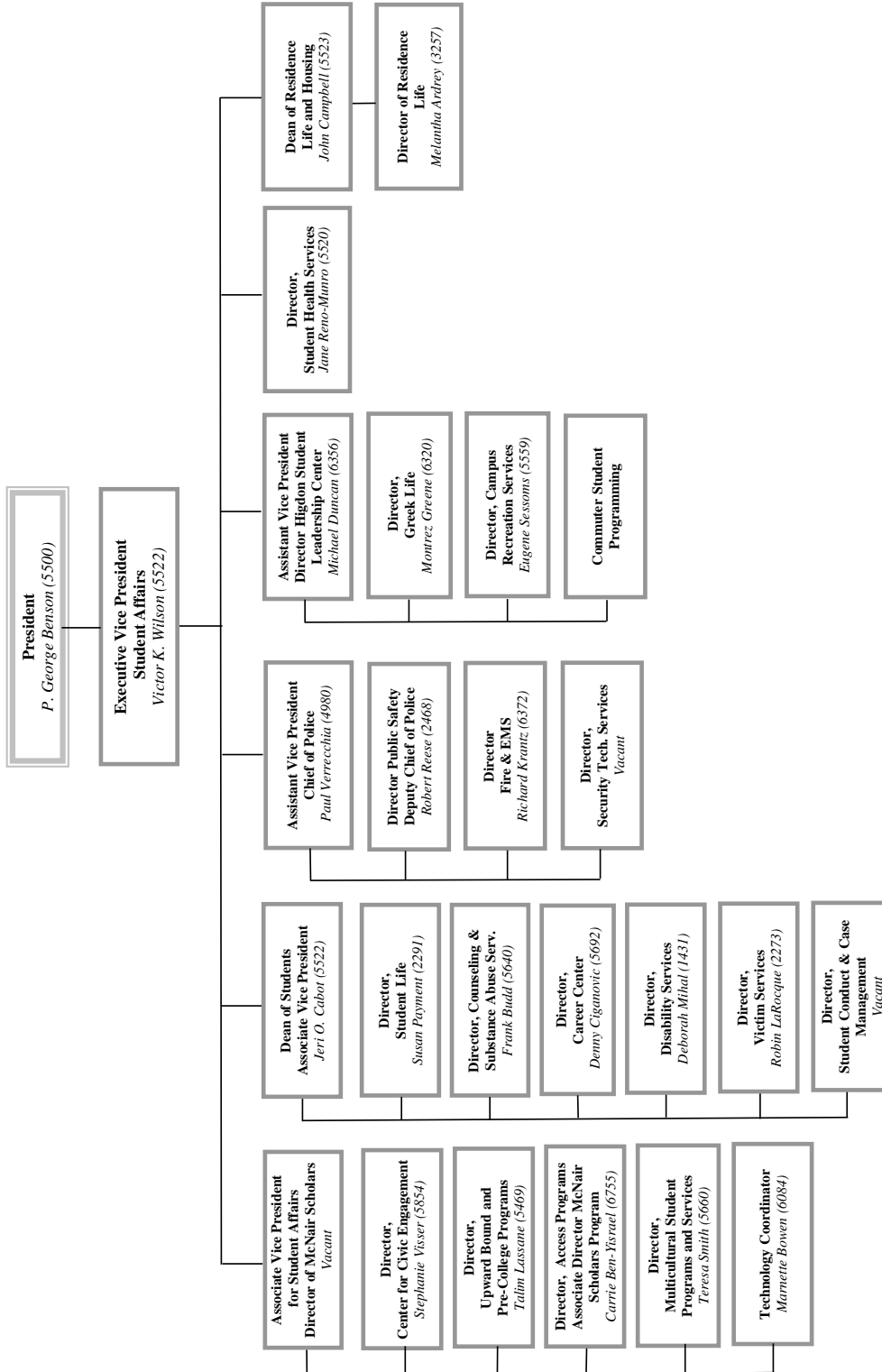
**College of Charleston  
Organizational Structure  
(continued)**



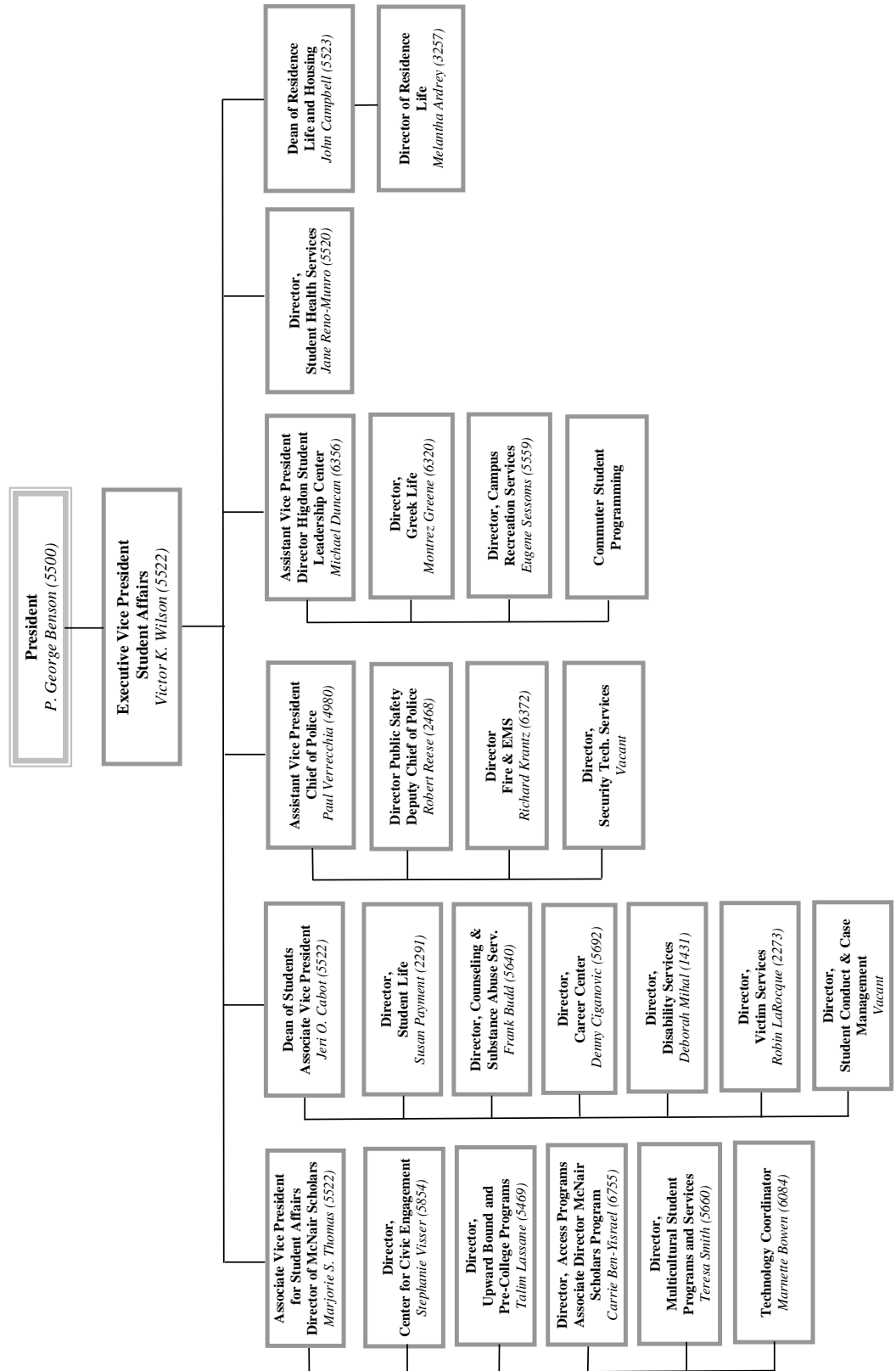
**College of Charleston**  
Organizational Structure  
(continued)



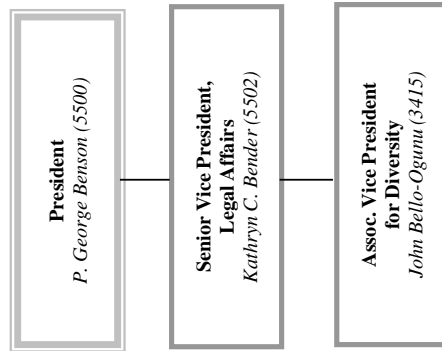
**College of Charleston**  
Organizational Structure  
(continued)



**College of Charleston**  
Organizational Structure  
(continued)



**College of Charleston  
Organizational Structure  
(continued)**



**Personnel Roster\*\*  
Filled Full-time Permanent Positions**

	<u>Classified</u>	<u>Unclassified</u>	<u>Total</u>
President's Office	17	6	23
Provost and Executive Vice President for Academic Affairs	228	601 **	829
Executive Vice President for Business Affairs	261	8	269
Executive Vice President for External Affairs	19	1	20
Executive Vice President for Institutional Advancement	31	9	40
Executive Vice President for Student Affairs	147	5	152
Athletic Director	39	12	51
	<u>742</u>	<u>642</u>	<u>1,384</u>

\* Current as of November 1, 2012. Excludes employees on leave without pay. Excludes full-time temporary staff.  
 \*\* Includes 519 roster faculty and 22 librarians.

**Employee Counts  
All Employees on the Payroll as of November 1st of Each Reporting Year**

IPEDS Employee Category*	2008-09	2009-10	2010-11	2011-12	2012-13
Full-time regular faculty	503	504	510	521	519
Full-time staff	824	828	964	967	971
All full-time employees	<u>1,327</u>	<u>1,332</u>	<u>1,474</u>	<u>1,488</u>	<u>1,490</u>
Part-time faculty	354	342	337	354	373
Part-time staff	177	157	172	178	220
Graduate Assistants	140	149	154	140	109
All part-time employees	<u>671</u>	<u>648</u>	<u>663</u>	<u>672</u>	<u>702</u>
Grand Total	<u>1,998</u>	<u>1,980</u>	<u>2,137</u>	<u>2,160</u>	<u>2,192</u>

Source: IPEDS Human Resources  
 \*IPEDS includes permanent and temporary positions and classifies employees under a full- or part-time category. IPEDS categorizes librarians as staff so the faculty count above only represent regular faculty positions. College of Charleston re-stated the Fall 2010 employee counts. The data above represent the corrected information, 2/8/12. Data reported prior to Fall 2010 excluded full-time temporary employees.

**Alumni  
Fall 2012**

Number of Living Graduates	51,610
Number of Graduates Since 1970	50,470
Number of Graduates Living in Charleston Area	20,210 (40%)

Note:

Includes graduates through December 31, 2012

Source: Office of Institutional Advancement



# *The Faculty*

*The Faculty*

**Roster Faculty  
Fall 2008 - Fall 2012**

	<u>Fall 2008</u>	<u>Fall 2009</u>	<u>Fall 2010</u>	<u>Fall 2011</u>	<u>Fall 2012</u>
Rank <sup>1</sup>					
Professors	125	128	128	141	140
Associate Professors	154	159	155	158	161
Assistant Professors	180	176	186	179	189
Instructors	64	62	63	64	60
Lecturers	<u>2</u>	<u>0</u>	<u>0</u>	<u>0</u>	<u>0</u>
Total Roster Faculty	<u><u>525</u></u>	<u><u>525</u></u>	<u><u>532</u></u>	<u><u>542</u></u>	<u><u>547</u></u>
Percent with Terminal Degrees <sup>1</sup>	87%	87%	88%	89%	89%
Percent with Tenure <sup>2</sup>	59%	61%	59%	62%	63%

Notes:

<sup>1</sup>Includes visiting faculty occupying a state line and roster faculty on sabbatical or leave without pay.

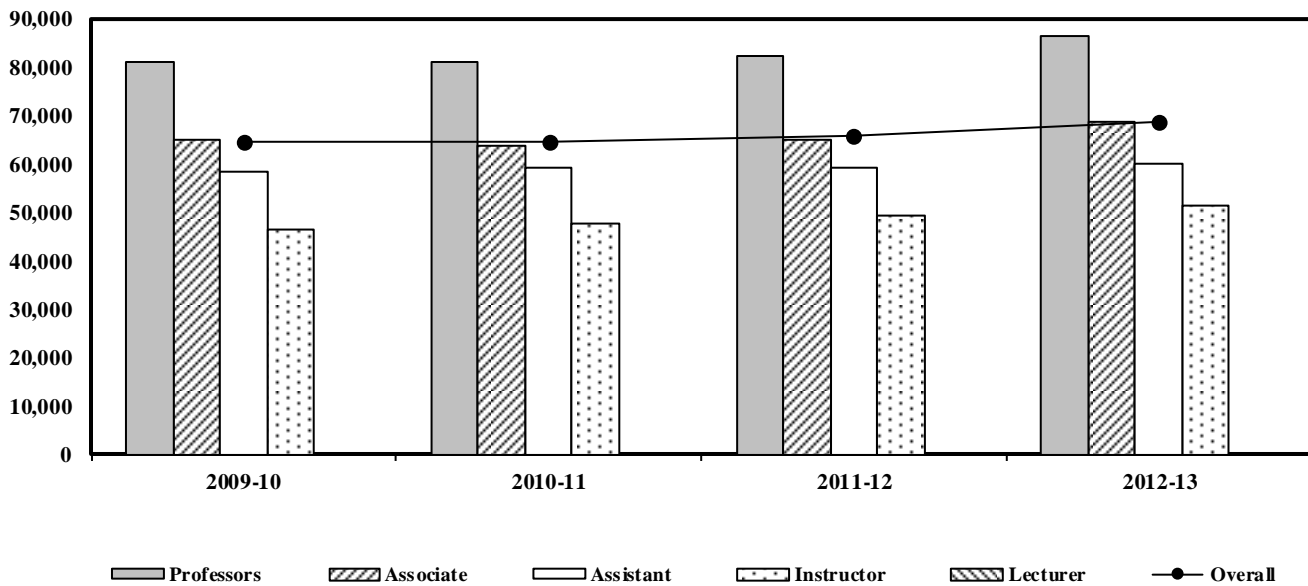
<sup>2</sup>Excludes both visiting faculty occupying a state line and administrators holding faculty rank.

**Average Nine Month Salaries  
of Instructional Roster Faculty  
2008-09 to 2012-13**

	<u>2009-10</u>	<u>2010-11</u>	<u>2011-12</u>	<u>2012-13</u>
Professors	\$81,225	\$81,074	\$82,328	\$86,375
Associate Professors	\$64,988	\$63,927	\$65,022	\$68,775
Assistant Professors	\$58,388	\$59,190	\$59,060	\$60,115
Instructors	\$46,282	\$47,795	\$49,223	\$51,375
Lecturers				
All Ranks	\$64,707	\$64,679	\$65,965	\$68,807

Note: Roster faculty only; library faculty, adjunct faculty and graduate assistants excluded.  
See graph below.

**Average Nine-Month Salary of Roster Faculty  
2008-09 to 2012-13**



**Profile of Instructional Roster Faculty<sup>1</sup>  
By Department  
2012-2013**

	Total	Professors	Associate Professors	Assistant Professors	Instructors	Tenured <sup>2</sup>	Terminal Degree	Women	Minority
Accounting and Legal Studies	11	9%	36%	36%	18%	56%	82%	36%	9%
African American Studies	1	0%	0%	100%	0%	0%	100%	0%	100%
Art History	12	42%	17%	25%	17%	64%	75%	50%	25%
Arts Management	3	0%	33%	67%	0%	50%	33%	67%	33%
Biology	39	23%	33%	33%	10%	68%	95%	36%	5%
Chemistry & Biochemistry	17	35%	12%	41%	12%	50%	100%	41%	0%
Classics	6	33%	33%	33%	0%	67%	100%	33%	0%
Communication	25	12%	52%	36%	0%	70%	92%	56%	0%
Computer Science	11	27%	18%	18%	36%	50%	64%	27%	9%
Economics and Finance	16	31%	19%	44%	6%	53%	94%	31%	25%
English	35	31%	29%	17%	23%	72%	89%	60%	6%
French, Franco, & Italian Student	13	31%	23%	23%	23%	67%	92%	62%	15%
Geology & Env't'l Geosciences	14	14%	57%	21%	7%	71%	93%	29%	14%
German & Slavic Studies	5	20%	20%	20%	40%	40%	60%	40%	0%
Health & Human Performance	17	12%	24%	47%	18%	43%	82%	53%	12%
Hispanic Studies	26	8%	42%	31%	19%	57%	88%	54%	46%
History	24	17%	33%	50%	0%	63%	92%	33%	8%
Hospitality & Tourism Management	7	29%	43%	14%	14%	71%	100%	14%	14%
International & Intercultural	9	0%	11%	78%	11%	11%	89%	44%	33%
Jewish Studies	4	25%	25%	25%	25%	67%	100%	25%	0%
Library	22	5%	9%	68%	18%	64%	77%	55%	14%
Management and Entrepreneurship	9	33%	33%	22%	11%	67%	89%	22%	0%
Marketing and Supply Chain Management	15	40%	40%	20%	0%	79%	93%	27%	7%
Mathematics	34	38%	26%	24%	12%	72%	91%	32%	12%
Music	13	38%	31%	31%	0%	75%	54%	23%	23%
Philosophy	12	50%	25%	25%	0%	82%	100%	33%	0%
Physics & Astronomy	18	22%	33%	28%	17%	59%	94%	17%	17%
Political Science	21	29%	24%	38%	10%	65%	86%	38%	24%
Psychology	23	35%	30%	35%	0%	68%	100%	43%	4%
Religious Studies	9	33%	33%	22%	11%	75%	78%	44%	11%
Sociology & Anthropology	20	30%	35%	20%	15%	72%	90%	55%	10%
Studio Art	9	67%	11%	22%	0%	78%	89%	33%	0%
Teacher Education	33	24%	24%	48%	3%	52%	97%	73%	9%
Theatre and Dance	14	14%	36%	43%	7%	54%	86%	43%	7%
College Total	547	26%	29%	34%	11%	63%	89%	43%	12%

Notes:

<sup>1</sup>Includes roster faculty on sabbatical or leave. Excludes administrators holding faculty rank.

<sup>2</sup>Excludes both visiting faculty occupying a state line and administrators holding faculty rank.

Percentages may not sum to 100% due to rounding.

**Student Credit Hours by Faculty Department  
Fall 2012**

Discipline	Faculty Department	Lower Div.	Upper Div.	Grad Div.	Total
0901	Communication	3,680	2,713	150	6,543
1101	Computer Science	2,178	578	135	2,891
1312	Teacher Education	917	4,369	1,366	6,652
1313	Health & Human Performance	4,214	1,916	0	6,130
1399	Education - Professional Devel	0	0	1,953	1,953
1605	German & Slavic Studies	1,253	339	0	1,592
1609	French, Franco, & Italian Stud	2,654	867	4	3,525
	Hispanic Studies	7,657	1,812	57	9,526
	Discipline Total	10,311	2,679	61	13,051
1612	Classics	1,500	315	0	1,815
1699	Asian Studies				
	International & Intercultural	2,120	202	3	2,325
	Discipline Total	2,120	202	3	2,325
2301	English	6,668	1,355	147	8,170
2501	Library	57	45	0	102
2601	Biology	7,973	2,680	348	11,001
2701	Mathematics	12,261	515	140	12,916
3099	African American Studies	120	78	0	198
	African Studies				
	Crime, Law, and Society	0	78	0	78
	Environmental Studies - Gradua	0	0	232	232
	Environmental Studies - Undergr	36	0	0	36
	Honors College	563	15	0	578
	International Studies Departme	105	0	0	105
	Jewish Studies	535	114	0	649
	New Student Programs	428	0	0	428
	Public Administration	0	0	180	180
	Women's and Gender Studies	762	17	0	779
	Discipline Total	2549	302	412	3263
3801	Philosophy	2,301	123	0	2,424
3802	Religious Studies	2,091	108	0	2,199
4005	Chemistry & Biochemistry	3,960	660	0	4,620
4006	Geology & Env't'l Geosciences	3,441	266	183	3,889
4008	Physics & Astronomy	3,240	321	29	3,590
4201	Psychology	6,495	1,394	0	7,889
4506	Economics and Finance	2,577	2,583	90	5,250
4510	Political Science (now POLI)	3,309	1,340	340	4,989
4511	Sociology & Anthropology	4,917	1,530	2	6,449
5005	Theatre	3,160	1,222	0	4,382
5007	Art History	2,628	837	39	3,504
	Studio Art	1,596	882	0	2,478
	Discipline Total	4,224	1,719	39	5,982
5009	Music	3,051	612	28	3,691
5010	Arts Management	402	846	3	1,251
5202	Management and Entrepreneurshi	372	2,435	180	2,987
5203	Accounting and Legal Studies	3,078	789	471	4,338
5208	Economics and Finance	2577	2,583	90	5,250
5209	Hospitality & Tourism Manageme	423	1,125	0	1,548
5214	Marketing and Supply Chain Man	753	3,528	0	4,281
5401	History	6,948	1,530	172	8,650
Total		113,000	42,722	6,342	162,063

**Student Credit Hours by Course Discipline  
Fall 2012**

Discipline	Subject Area	Lower Div.	Upper Div.	Grad Div.	Total
30103	Environmental Studies - Graduate	0	0	552	552
50134	Latin American & Caribbean Studies	288	3	0	291
50207	Women's and Gender Studies	915	84	0	999
90101	Communication	3,680	2,668	0	6,348
90901	Communication	0	0	150	150
110101	Computer Science	1,875	573	0	2,448
110199	Discovery Informatics	147	6	0	153
110701	Computer And Information Sciences	0	0	135	135
110899	Computing in the Arts	156	0	0	156
130101	Education:Foundations/Sec/SPED	528	345	205	1,078
130301	Education: Middle Grades	0	36	0	36
	Education:Foundations/Sec/SPED	0	42	54	96
	Elementary/Early Childhood Education	0	3	0	3
	Teacher Education	56	0	0	56
130501	Education:Foundations/Sec/SPED	0	390	60	450
131001	Education:Foundations/Sec/SPED	0	520	126	646
	First-Year Seminar	144	0	0	144
131006	Education:Foundations/Sec/SPED	0	54	0	54
131011	Education:Foundations/Sec/SPED	0	0	39	39
131202	Elementary/Early Childhood Education	0	288	285	573
131203	Education: Middle Grades	0	0	18	18
	Elementary/Early Childhood Education	0	183	36	219
131205	Education:Foundations/Sec/SPED	0	273	0	273
131206	Education - Professional Development	0	0	2,061	2,061
	Education:Foundations/Sec/SPED	0	0	18	18
	Elementary/Early Childhood Education	0	1,548	102	1,650
131210	Elementary/Early Childhood Education	0	660	209	869
131299	Education:Teaching/Learn/Advocacy	0	0	99	99
131306	Languages	0	0	45	45
131314	Health	1,251	401	0	1,652
	Physical Education	279	401	0	680
	Physical Education-Activity	2,234	0	0	2,234
131399	Sci/Math For Teachers	0	8	73	81
160501	First-Year Seminar	51	0	0	51
	German	777	249	0	1,026
	German Lit In Translation	90	0	0	90
160901	French	1,871	660	0	2,531
160905	First-Year Seminar	57	0	0	57
	Spanish	7,147	1,812	12	8,971
161200	Classics	801	90	0	891
	First-Year Seminar	60	0	0	60
	Greek	117	21	0	138
	Latin	522	90	0	612
169999	Arabic	264	30	0	294
	Arabic Lit In Translation	45	0	0	45
	Asian Studies	90	3	0	93
	Chinese	304	21	0	325
	Chinese Lit In Translation	27	0	0	27

**Student Credit Hours by Course Discipline  
Fall 2012  
(Continued)**

Discipline	Subject Area	Lower Div.	Upper Div.	Grad Div.	Total
	First-Year Seminar	120	0	0	120
	Hebrew	100	15	0	115
	Hindi	40	0	0	40
	Italian	783	105	0	888
	Italian Lit In Translation	0	75	0	75
	Japanese	312	39	0	351
	Japanese Lit In Translation	51	0	0	51
	Linguistics	90	0	0	90
	Portuguese	225	0	0	225
	Portuguese Lit In Translation	33	0	0	33
	Russian	209	87	0	296
	Russian Lit In Translation	177	0	0	177
230101	English	5,626	1,297	150	7,073
	First-Year Seminar	165	0	0	165
	Honors	628	0	0	628
250101	Library	57	0	0	57
260101	Biology	7,775	2,646	0	10,421
	First-Year Seminar	188	0	0	188
	Honors	152	0	0	152
260908	Exercise Science	306	797	0	1,103
261302	Biology	0	26	262	288
270101	First-Year Seminar	42	0	0	42
	Honors	32	0	0	32
	Math	12,187	504	108	12,799
301201	Historic Preservation	0	0	39	39
	Historic Preservation & Commun	576	261	0	837
302001	International Studies	798	19	0	817
309999	African American Studies	120	99	0	219
	Comparative Literature	0	1	0	1
	Crime, Law And Society	0	99	0	99
	Environmental Studies - Underg	144	30	0	174
	First-Year Seminar	54	0	0	54
	Honors	297	315	0	612
	Learning Strategies	0	0	0	
380101	First-Year Seminar	120	0	0	120
	Philosophy	2,121	120	0	2,241
380201	First-Year Seminar	60	0	0	60
	Honors	48	0	0	48
	Religious Studies	1,911	84	0	1,995
380206	Jewish Studies	273	105	0	378
400299	Astronomy	1,240	45	0	1,285
	Honors	92	0	0	92
400501	Chemistry	3,728	388	0	4,116
	Honors	232	0	0	232
400599	Chemistry	0	255	0	255
400601	Geology	3,302	257	0	3,559



**Student Credit Hours by Course Discipline  
Fall 2012  
(Continued)**

Discipline	Subject Area	Lower Div.	Upper Div.	Grad Div.	Total
	Honors	136	0	0	136
400801	Physics	1,925	277	0	2,202
420101	First-Year Seminar	120	0	0	120
	Psychology	6,273	1,418	0	7,691
440401	Public Administration	0	3	474	477
450201	Anthropology	2,205	552	0	2,757
450601	Economics	2,364	972	0	3,336
	Honors	30	0	0	30
451001	Geography	90	0	0	90
	Honors	1,008	0	0	1,008
	Political Science	3,186	1,370	0	4,556
451101	First-Year Seminar	180	0	0	180
	Honors	51	0	0	51
	Sociology	2,694	909	0	3,603
451201	Urban Studies	102	181	0	283
500101	Music Education	0	0	27	27
500301	Dance	88	152	0	240
500501	First-Year Seminar	120	0	0	120
	Theatre	2,952	1,028	0	3,980
500702	Studio Art	1,596	882	0	2,478
500703	Art History	1,950	402	0	2,352
500901	First-Year Seminar	60	0	0	60
	Music	2,813	570	0	3,383
	Music - Practicum	178	42	0	220
501002	Arts Management	402	846	0	1,248
510913	Athletic Training	144	317	0	461
520201	Business Law	1,053	0	0	1,053
	Decision Sciences	966	1,284	0	2,250
	Entrepreneurship	0	429	0	429
	Finance	144	1,365	0	1,509
	First-Year Seminar	177	0	0	177
	Honors	69	0	0	69
	Intermodal Transportation	0	87	0	87
	Management	99	1,979	0	2,078
	Marketing And Supply Chain Man	0	1,815	0	1,815
	Master Business Administration	0	0	450	450
	Real Estate	0	240	0	240
520301	Accounting	1,986	879	291	3,156
	Honors	39	0	0	39
520901	First-Year Seminar	297	0	0	297
	Hospitality And Tourism Manage	423	1,128	0	1,551
521101	International Business	0	237	0	237
540101	First-Year Seminar	132	0	0	132
	History	6,147	1,644	172	7,963
	Honors	33	0	0	33
Total		110,422	40,139	6,252	156,813

**Student Credit Hours by School, Department, and Subject  
Fall 2012**

School	Department	Subject	Lower Div.	Upper Div.	Grad Div.	Total	
Interdisciplinary Areas	American Studies	American Studies					
		Dept Total					
	Environmental Studies - Gradua	Environmental Studies - G	0	0	528	528	
		Dept Total	0	0	528	528	
	Environmental Studies - Underg	Environmental Studies - UG	144	30	0	174	
		Dept Total	144	30	0	174	
	Honors College	Honors	2,847	315	0	3,162	
		Dept Total	2,847	315	0	3,162	
	Library	Library					
		Dept Total					
	New Student Programs	First-Year Seminar	2,147	0	0	2,147	
		Freshmen Seminar					
		Learning Strategies	0	0	0	0	
		Dept Total	2,147	0	0	2,147	
	Sci/Math for Teachers	Sci/Math For Teachers	0	8	73	81	
		Dept Total	0	8	73	81	
	<b>School Total</b>			<b>5,138</b>	<b>353</b>	<b>601</b>	<b>6,092</b>
Libraries	Library	Library	57	0	0	57	
		Dept Total	57	0	0	57	
	<b>School Total</b>			<b>57</b>	<b>0</b>	<b>0</b>	<b>57</b>
School of Business	Accounting and Legal Studies	Accounting	1,986	879	291	3,156	
		Business Law	1,053	0	0	1,053	
		Master Business Administration	0	0	180	180	
		Dept Total	3,039	879	471	4,389	
	Economics and Finance	Economics	2,364	972	0	3,336	
		Finance	144	1,365	0	1,509	
		Master Business Administration	0	0	90	90	
		Real Estate	0	240	0	240	
		Dept Total	2,508	2,577	90	5,175	
	Hospitality & Tourism Manageme	Hospitality And Tourism Manage	423	1,128	0	1,551	
		Dept Total	423	1,128	0	1,551	
	Management and Entrepreneurshi	Entrepreneurship	0	429	0	429	
		Management	99	1,979	0	2,078	
		Master Business Administration	0	0	180	180	
		Dept Total	99	2,408	180	2,687	
	Marketing and Supply Chain Man	Decision Sciences	966	1,284	0	2,250	
		Intermodal Transportation	0	87	0	87	
		International Business	0	237	0	237	
		Marketing And Supply Chain Man	0	1,815	0	1,815	
		Dept Total	966	3,423	0	4,389	
	<b>School Total</b>			<b>7,035</b>	<b>10,415</b>	<b>741</b>	<b>18,191</b>
	School of Education, Health and Human Performance	Education	Education: Middle Grades				
			Dept Total				
Education - Professional Devel		Education - Professional Devel	0	0	2,061	2,061	
		Dept Total	0	0	2,061	2,061	
Health & Human Performance		Athletic Training	144	317	0	461	
		Exercise Science	306	797	0	1,103	
		Health	1,251	401	0	1,652	
		Physical Education	279	401	0	680	
		Physical Education-Activity	2,234	0	0	2,234	
		Dept Total	4,214	1,916	0	6,130	
Sci/Math for Teachers		Sci/Math For Teachers					
		Dept Total					

**Student Credit Hours by School, Department, and Subject  
Fall 2012  
(Continued)**

School	Department	Subject	Lower Div.	Upper Div.	Grad Div.	Total
	International & Intercultural	Arabic	264	30	0	294
		Arabic Lit In Translation	45	0	0	45
		Asian Studies	90	3	0	93
		Chinese	304	21	0	325
		Chinese Lit In Translation	27	0	0	27
		Hebrew	100	15	0	115
		Hindi	40	0	0	40
		Japanese	312	39	0	351
		Japanese Lit In Translation	51	0	0	51
		Language				
		Dept Total	1,233	108	0	1,341
	International Studies Departme	International Studies	798	19	0	817
		Dept Total	798	19	0	817
	Jewish Studies	Jewish Studies	273	105	0	378
		Dept Total	273	105	0	378
	Languages	Languages	0	0	45	45
		Dept Total	0	0	45	45
	Latin American & Caribbean Stu	Latin American & Caribbean Stu	288	3	0	291
		Dept Total	288	3	0	291
	<b>School Total</b>		<b>15,554</b>	<b>3,523</b>	<b>57</b>	<b>19,134</b>
School of Science and Mathematics	Biology	Biology	7,775	2,672	262	10,709
		Dept Total	7,775	2,672	262	10,709
	Chemistry & Biochemistry	Chemistry	3,728	643	0	4,371
		Dept Total	3,728	643	0	4,371
	Computer Science	Computer And Information Scien	0	0	135	135
		Computer Science	1,875	573	0	2,448
		Computing in the Arts	156	0	0	156
		Dept Total	2,031	573	135	2,739
	Discovery Informatics	Discovery Informatics	147	6	0	153
		Dept Total	147	6	0	153
	Environmental Studies - Gradua	Environmental Studies - Gradua	0	0	24	24
		Dept Total	0	0	24	24
	Geology & Env'tl Geosciences	Environmental Studies - Gradua				
		Geology	3,302	257	0	3,559
		Dept Total	3,302	257	0	3,559
	Mathematics	Math	12,187	504	108	12,799
		Dept Total	12,187	504	108	12,799
	Physics & Astronomy	Astronomy	1,240	45	0	1,285
		Physics	1,925	277	0	2,202
		Dept Total	3,165	322	0	3,487
	<b>School Total</b>		<b>32,335</b>	<b>4,977</b>	<b>529</b>	<b>37,841</b>
School of the Arts	Art History	Art History	1,950	402	0	2,352
		Historic Preservation	0	0	39	39
		Historic Preservation & Commun	576	261	0	837
		Dept Total	2,526	663	39	3,228
	Arts Management	Arts Management	402	846	0	1,248
		Dept Total	402	846	0	1,248
	Music	Music	2,813	570	0	3,383
		Music - Practicum	178	42	0	220
		Music Education	0	0	27	27
		Dept Total	2,991	612	27	3,630
	Studio Art	Studio Art	1,596	882	0	2,478
		Dept Total	1,596	882	0	2,478
	Theatre	Dance	88	152	0	240
		Theatre	2,952	1,028	0	3,980
		Dept Total	3,040	1,180	0	4,220
	<b>School Total</b>		<b>10,555</b>	<b>4,183</b>	<b>66</b>	<b>14,804</b>
<b>College Total</b>			<b>110,422</b>	<b>40,139</b>	<b>6,252</b>	<b>156,813</b>

**Student Credit Hours by School, Department, and Subject  
Fall 2012  
(Continued)**

School	Department	Subject	Lower Div.	Upper Div.	Grad Div.	Total
	Teacher Education	Education: Middle Grades	0	36	18	54
		Education:Foundations/Sec/SPED	528	1,624	502	2,654
		Education:Teaching/Learn/Advoc	0	0	99	99
		Elementary/Early Childhood Edu	0	2,682	632	3,314
		Teacher Education	56	0	0	56
		Dept Total	584	4,342	1,251	6,177
	School Total		4,798	6,258	3,312	14,368
School of Humanities and Social Sciences	Communication	Communication	3,680	2,668	150	6,498
		Dept Total	3,680	2,668	150	6,498
	Comparative Literature	Comparative Literature	0	1	0	1
		Dept Total	0	1	0	1
	Crime, Law, and Society	Crime, Law And Society	0	99	0	99
		Dept Total	0	99	0	99
	English	English	5,626	1,297	150	7,073
		Dept Total	5,626	1,297	150	7,073
	History	History	6,147	1,644	172	7,963
		Dept Total	6,147	1,644	172	7,963
	Philosophy	Philosophy	2,121	120	0	2,241
		Dept Total	2,121	120	0	2,241
	Political Science (now POLI)	Geography	90	0	0	90
		Political Science	3,186	1,370	0	4,556
		Dept Total	3,276	1,370	0	4,646
	Psychology	Psychology	6,273	1,418	0	7,691
		Dept Total	6,273	1,418	0	7,691
	Public Administration	Public Administration	0	3	474	477
		Dept Total	0	3	474	477
	Religious Studies	Religious Studies	1,911	84	0	1,995
		Dept Total	1,911	84	0	1,995
	Sociology & Anthropology	Anthropology	2,205	552	0	2,757
		Sociology	2,694	909	0	3,603
		Dept Total	4,899	1,461	0	6,360
	Urban Studies	Urban Studies	102	181	0	283
		Dept Total	102	181	0	283
	Women's and Gender Studies	Women's and Gender Studies	915	84	0	999
		Dept Total	915	84	0	999
	School Total		34,950	10,430	946	46,326
School of Languages, Cultures, and World Affairs	African American Studies	African American Studies	120	99	0	219
		Dept Total	120	99	0	219
	African Studies	African Studies				
		Dept Total				
	Classics	Classics	801	90	0	891
		Greek	117	21	0	138
		Latin	522	90	0	612
		Dept Total	1,440	201	0	1,641
	French, Franco, & Italian Stud	French	1,871	660	0	2,531
		Italian	783	105	0	888
		Italian Lit In Translation	0	75	0	75
		Dept Total	2,654	840	0	3,494
	German & Slavic Studies	German	777	249	0	1,026
		German Lit In Translation	90	0	0	90
		Russian	209	87	0	296
		Russian Lit In Translation	177	0	0	177
		Dept Total	1,253	336	0	1,589
	Hispanic Studies	Interpreting				
		Linguistics	90	0	0	90
		Portuguese	225	0	0	225
		Portuguese Lit In Translation	33	0	0	33
		Spanish	7,147	1,812	12	8,971
		Spanish Lit in Translation				
		Dept Total	7,495	1,812	12	9,319

# *Admissions*



**Office of Admissions  
Application Summary  
2011-2013**

The information included below summarizes the receipt of applications for admission for the first semester of the academic years 2010-11, 2011-12 and 2012-13

	<u>In State</u>			<u>Out of State</u>			<u>Total</u>		
	2011	2012	2013	2011	2012	2013	2011	2012	2013
<b>Regular:</b>									
Men	1,457	1,257	1,431	2,090	2,165	2,430	3,547	3,422	3861
Women	2,581	2,310	2,566	4,466	4,587	5,008	7,047	6,897	7574
Sub-Total	4,038	3,567	3,997	6,556	6,752	7,438	10,594	10,319	11435
<b>Provisional:</b>									
Men	85	135	103	120	105	67	205	240	170
Women	235	268	222	246	259	135	481	527	357
Sub-Total	320	403	325	366	364	202	686	767	527
Total Freshmen:	4,358	3,970	4,322	6,922	7,116	7,640	11,280	11,086	11,962
<b>Transfers &amp; Readmits:</b>									
Men	594	515	509	326	322	332	920	837	841
Women	734	603	669	603	500	536	1,337	1,103	1205
Total	1,328	1,118	1,178	929	822	868	2,257	1,940	2,046
<b>Non-Degree:</b>									
Men	23	52	54	39	11	9	62	63	63
Women	48	57	58	44	20	23	92	77	81
Total	71	109	112	83	31	32	154	140	144
<b>Total Summarized:</b>									
Men	2,159	1,959	2,097	2,575	2,603	2,838	4,734	4,562	4935
Women	3,598	3,238	3,515	5,359	5,366	5,702	8,957	8,604	9217
Total	5,757	5,197	5,612	7,934	7,969	8,540	13,691	13,166	14,152

**Average Combined SAT Scores<sup>3</sup>  
2008-2012**

	2008	2009	2010	2011	2012
National High School Seniors <sup>1</sup>					
Verbal	502	501	501	497	496
Math	515	515	516	514	514
Combined	1017	1016	1017	1011	1010
South Carolina High School Seniors <sup>1</sup>					
Verbal	488	486	484	482	481
Math	497	496	495	490	488
Combined	985	982	979	972	969
College of Charleston Fall Entering Freshmen <sup>2</sup>					
Verbal	612	606	606	605	606
Math	609	606	605	596	603
Combined	1221	1212	1211	1201	1209

Notes:

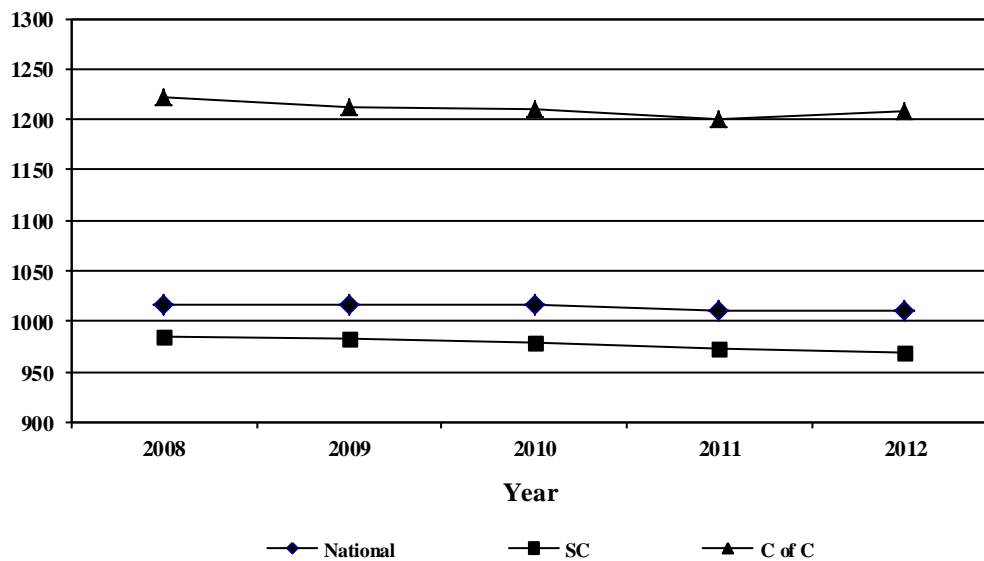
<sup>1</sup>Source: College Board

<sup>2</sup>Average excludes foreign, provisional, and students age 22 years and above.

<sup>3</sup>Scores reported are the average of the reported recentered SAT scores.

See graph below.

**Average Combined SAT Scores  
2008-2012**





**SAT Scores of First-Time Entering Freshmen\***  
**South Carolina Public Colleges and Universities**  
**Fall 2012**

	% Reporting ACT	ACT Mean	<u>All Students</u> % Reporting SAT	<u>Reporting SAT</u>		
				Verbal Mean	Math Mean	Combined Mean
<b>Public Senior Institutions</b>						
The Citadel	35.9%	23	63.9%	539	549	1088
Clemson University	35.9%	28	64.1%	611	636	1248
Coastal Carolina University	38.3%	21	61.7%	494	507	1001
College of Charleston	47.0%	25	57.5%	606	603	1209
Francis Marion University	44.6%	20	54.2%	475	479	954
Lander University	46.1%	21	53.9%	490	500	990
South Carolina State University	59.9%	17	63.7%	404	412	816
U.S.C. - Columbia	37.1%	26	62.9%	588	606	1193
U.S.C. - Aiken	41.9%	21	58.1%	494	499	994
U.S.C. - Beaufort	30.4%	20	69.3%	469	470	939
U.S.C. - Upstate	40.6%	21	59.4%	493	501	993
Winthrop University	42.3%	23	57.7%	540	533	1073
All Public Senior Institutions	39.9%	23	60.7%	536	548	1083
<b>Two-Year Regional Campuses</b>						
U.S.C. - Lancaster	30.5%	21	64.8%	489	517	1006
U.S.C. - Salkehatchie	50.0%	17	50.0%	506	479	985
U.S.C. - Sumter	50.0%	21	50.0%	520	530	1050
U.S.C. - Union	57.1%	19	42.9%	486	532	1018
All Two-Year Regional Campuses	41.1%	20	56.7%	500	520	1020

Notes:

\*Data excludes foreign, provisional, and students age 22 and above.

Source: South Carolina Commission on High Education, Report CHES605EIP

**Summary of Enrolled Freshmen by Rank in Class  
2008-2012**

The following is a comparison of the previous four freshman classes with the current freshman class:

DECILE	2008 %	2009 %	2010 %	2011 %	2012 %
First	26	31	31	28	31
Second	26	27	26	26	27
Third	19	18	20	18	18
Fourth	13	11	11	13	12
Fifth	8	8	6	8	6
Sixth	5	3	3	5	4
Seventh	1	1	1	2	1
Eighth	1	1	1	1	1
Ninth	0	0	1	0	0
Tenth	0	0	0	0	0
<b>TOTAL</b>	<b>100</b>	<b>100</b>	<b>100</b>	<b>100</b>	<b>100</b>

Percentages below are rounded to the nearest whole number.

	2008	2009	2010	2011	2012
Top 20%	52%	58%	57%	54%	58%
Top 30%	71%	75%	77%	72%	76%
Top 40%	84%	86%	88%	85%	88%
Top 50%	93%	94%	94%	93%	94%

Note:

Percentages exclude those students whose high schools do not rank.

**South Carolina High Schools  
Contributing Five or More Entering Freshmen  
Fall 2012**

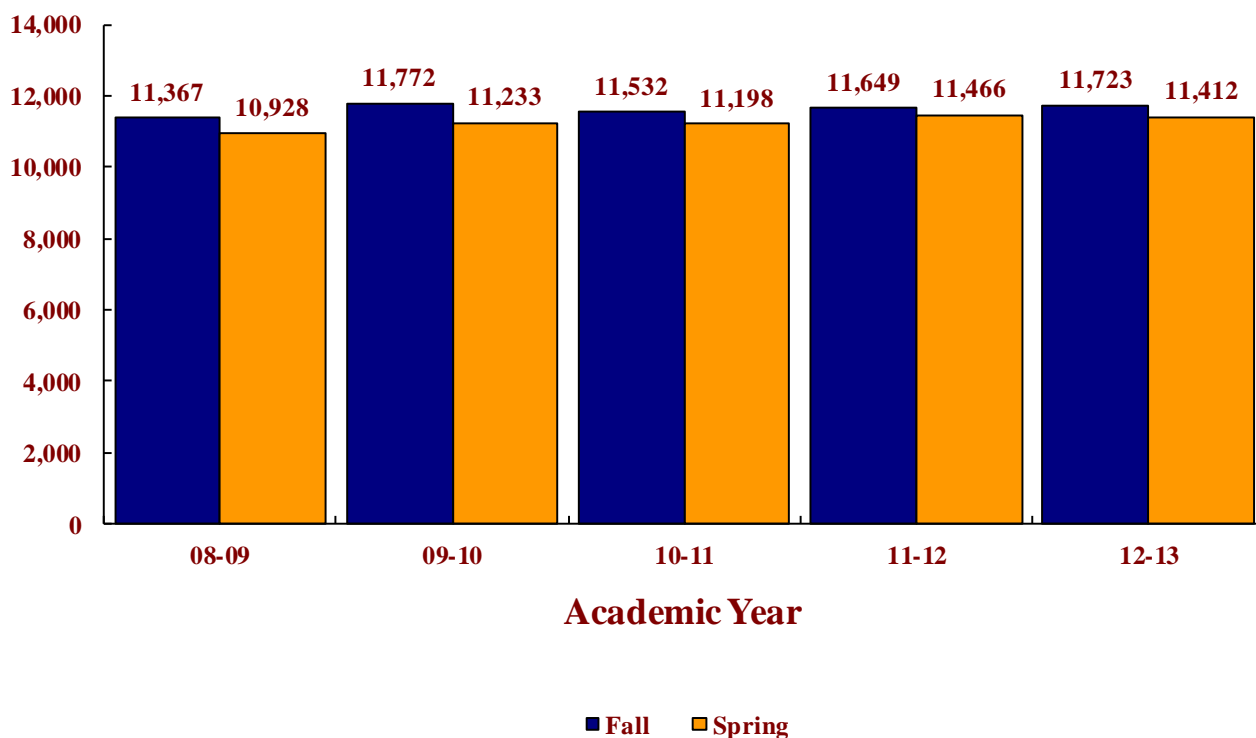
<b>High School</b>	<b>Number</b>	<b>High School</b>	<b>Number</b>
Wando	74	Dutch Fork	8
Lexington	23	James F Byrnes	8
Fort Mill	22	Pinewood Preparatory	8
James L Mann	22	Camden	7
Socastee	18	Cane Bay	7
Eastside	17	Carolina Forest	7
Stratford	16	Gilbert	7
Charleston Co Sch Of The Arts	15	Hammond	7
Ashley Ridge	14	Mauldin	7
West Ashley	14	Nation Ford	7
Irmo	13	North Augusta	7
Summerville	13	Riverside	7
North Western	12	St. James	7
Spartanburg	12	T L Hanna	7
Waccamaw	12	Berkeley	6
A C Flora	11	Blythewood	6
Bishop England	11	Fort Dorchester	6
James Island Charter	11	Paul M. Dorman	6
Wade Hampton - Greenville	11	Richland Northeast	6
White Knoll	11	Rock Hill	6
Academic Magnet	10	Saint Josephs Catholic	6
Clover	10	South Aiken	6
Dreher	10	Spring Valley	6
Hilton Head	10	Travelers Rest	6
Academy For Arts Sci & Tech	9	Aiken	5
Easley	9	Boiling Springs	5
Greenville	9	Carinal Newman	5
Hillcrest	9	Governors School Science & Math	5
Myrtle Beach	9	Greenwood	5
Sumpter	9	Hanahan	5
Wren	9	Indian Land	5
Beaufort	8	Westside	5
Chapin	8		



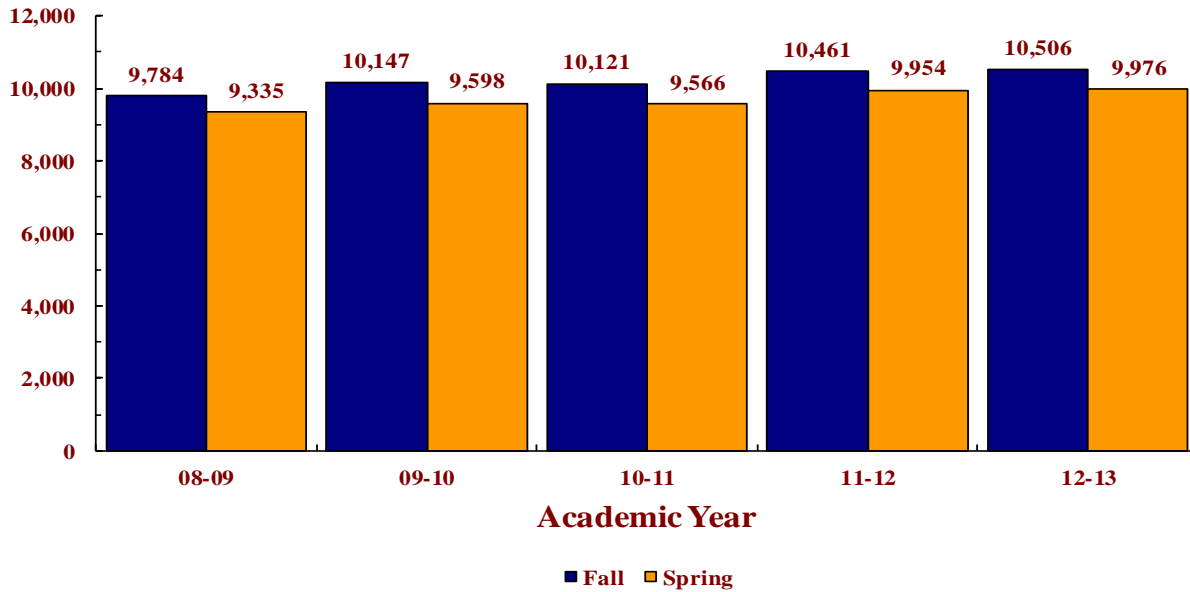
# *Demographics*

*Demographics*

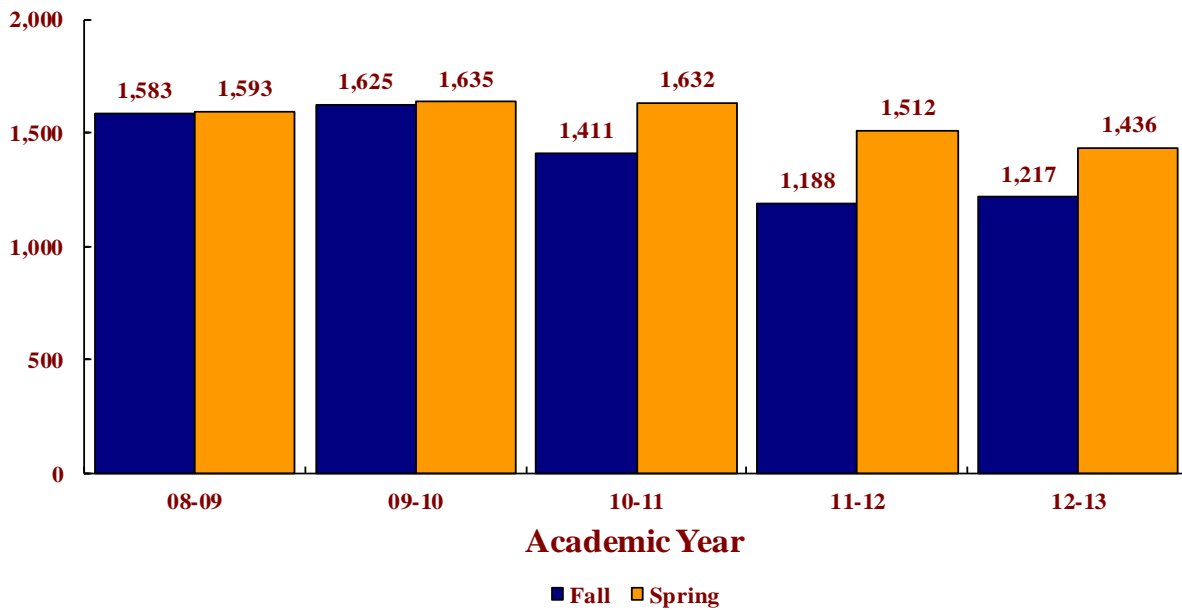
## Total Student Headcount 2008-2009 to 2012-2013



### Undergraduate Headcount 2008-2009 to 2012-2013

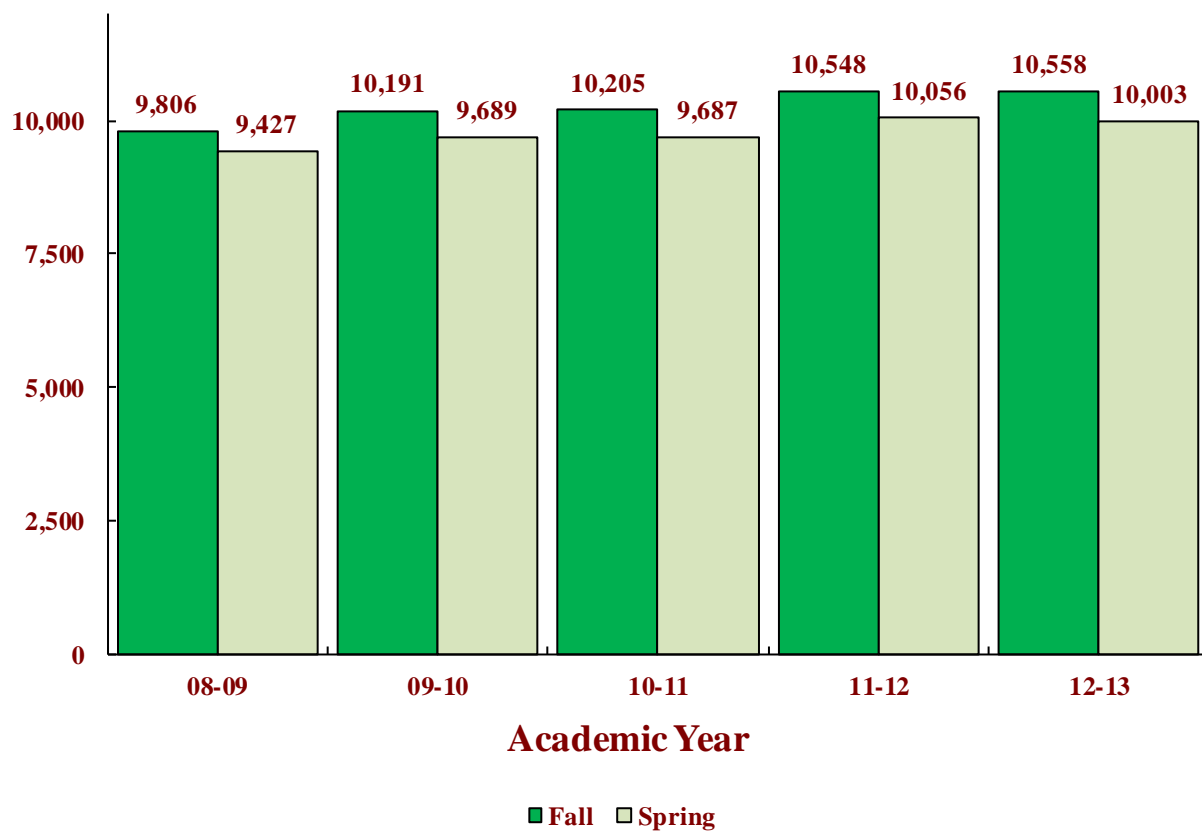


### Graduate Headcount 2008-2009 to 2012-2013

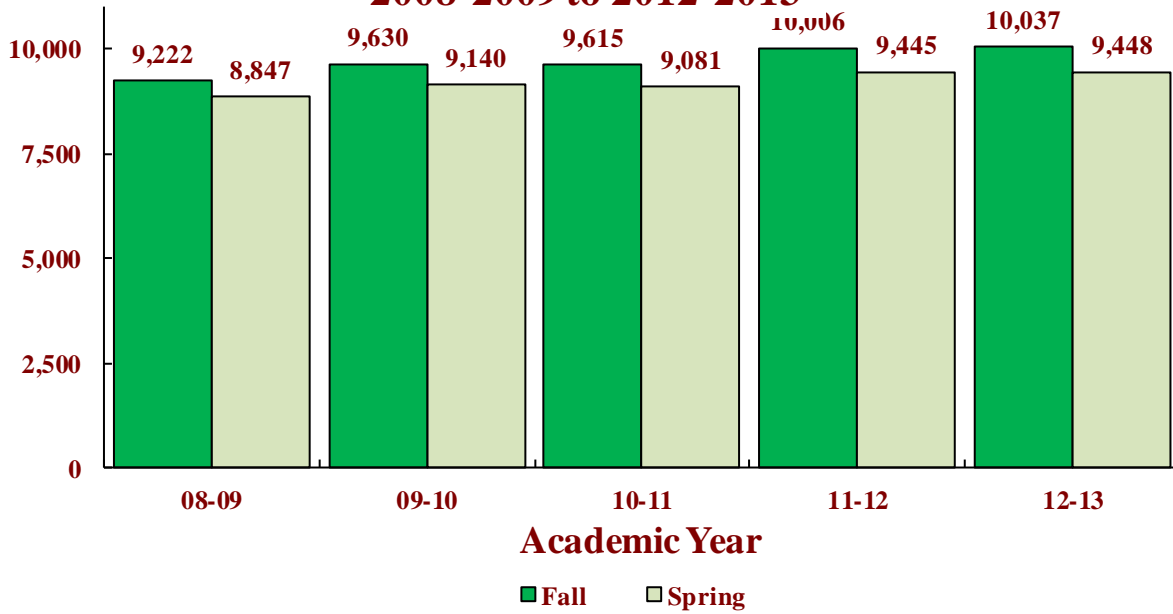




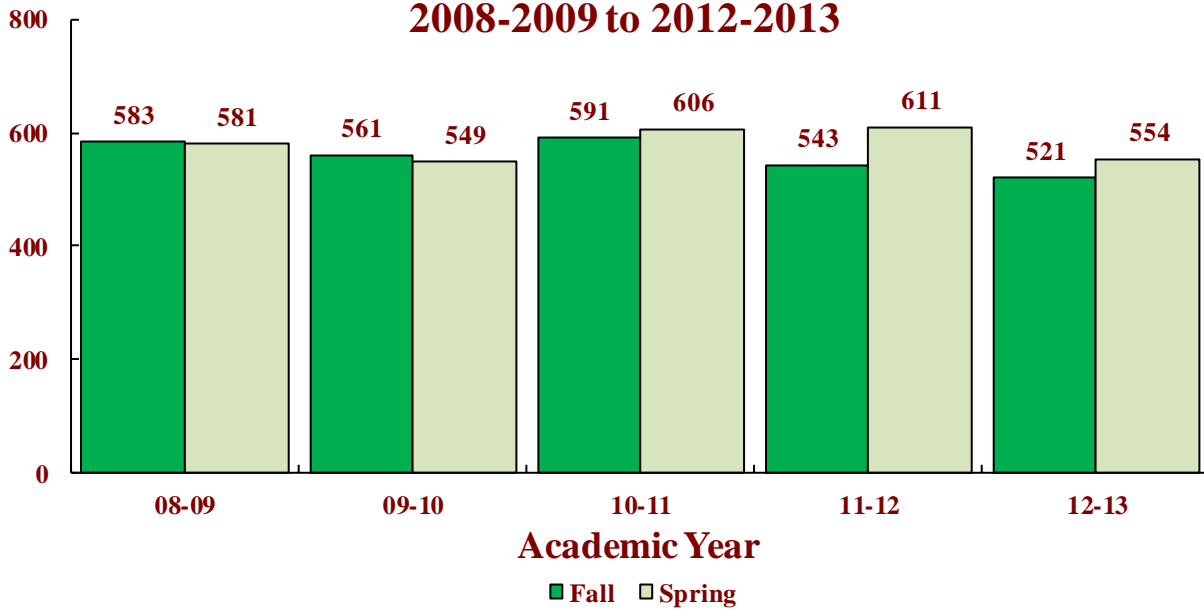
## Total FTE Students 2008-2009 to 2012-2013

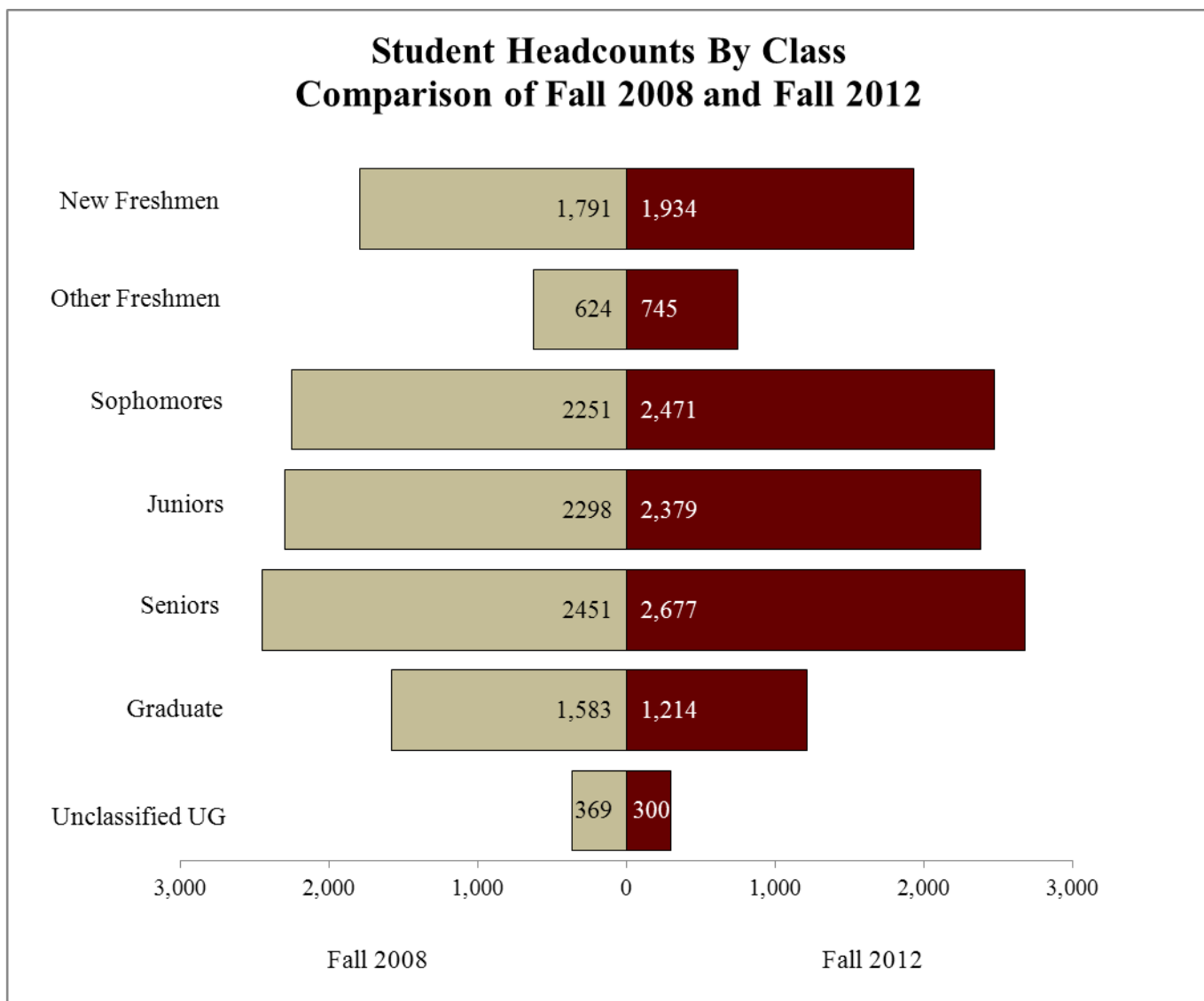


## Undergraduate FTE 2008-2009 to 2012-2013



## Graduate FTE 2008-2009 to 2012-2013





**Full-Time/Part-Time Students by Class  
Fall 2008 - Fall 2012**

Class	Fall 2008		Fall 2009		Fall 2010		Fall 2011		Fall 2012	
	Full-Time N (%)	Part-Time N (%)	Full-Time N (%)	Part-Time N (%)	Full-Time N (%)	Part-Time N (%)	Full-Time N (%)	Part-Time N (%)	Full-Time N (%)	Part-Time N (%)
Freshmen	2396 (99)	19 (1)	2527 (99)	18 (1)	2441 (99)	21 (1)	2835 (99)	19 (1)	2652 (99)	27 (1)
Sophomores	2188 (97)	63 (3)	2212 (97)	57 (3)	2340 (98)	56 (2)	2191 (97)	74 (3)	2410 (98)	61 (2)
Juniors	2200 (96)	98 (4)	2233 (96)	85 (4)	2202 (96)	90 (4)	2267 (96)	96 (4)	2248 (94)	131 (6)
Seniors	2133 (87)	318 (13)	2284 (88)	320 (12)	2316 (88)	305 (12)	2318 (87)	332 (13)	2364 (88)	313 (12)
Unclassified Undergraduate <sup>1</sup>	71 (19)	298 (81)	78 (19)	333 (81)	98 (28)	252 (72)	89 (27)	240 (73)	86 (29)	214 (71)
<b>SUBTOTAL</b>	<b>8988 (92)</b>	<b>796 (8)</b>	<b>9334 (92)</b>	<b>813 (8)</b>	<b>9397 (93)</b>	<b>724 (7)</b>	<b>9700 (93)</b>	<b>761 (7)</b>	<b>9760 (93)</b>	<b>746 (7)</b>
Graduates	281 (56)	217 (44)	305 (58)	220 (42)	355 (63)	212 (37)	336 (57)	249 (43)	293 (55)	236 (45)
Unclassified Graduates <sup>2</sup>	12 (1)	1073 (99)	14 (1)	1086 (99)	10 (1)	834 (99)	11 (2)	592 (98)	13 (2)	675 (98)
<b>SUBTOTAL</b>	<b>293 (19)</b>	<b>1290 (81)</b>	<b>319 (20)</b>	<b>1306 (80)</b>	<b>365 (26)</b>	<b>1046 (74)</b>	<b>347 (29)</b>	<b>841 (71)</b>	<b>306 (25)</b>	<b>911 (75)</b>
<b>GRAND TOTAL</b>	<b>9281 (82)</b>	<b>2086 (18)</b>	<b>9653 (82)</b>	<b>2119 (18)</b>	<b>9762 (85)</b>	<b>1770 (15)</b>	<b>### (86)</b>	<b>1602 (14)</b>	<b>10066 (86)</b>	<b>1657 (14)</b>

Notes:

<sup>1</sup>Unclassified undergraduates include high school students, students on probationary admission, transient students, and other non-degree seeking undergraduates.

<sup>2</sup>Unclassified graduates include professional development, transient, probationary admission, and other non-degree seeking students.

**Gender Distribution of Students by Class**  
**Fall 2008 - Fall 2012**

Class	Fall 2008		Fall 2009		Fall 2010		Fall 2011		Fall 2012	
	Male N (%)	Female N (%)	Male N (%)	Female N (%)	Male N (%)	Female N (%)	Male N (%)	Female N (%)	Male N (%)	Female N (%)
Freshmen	864 (36)	1551 (64)	835 (33)	1710 (67)	899 (37)	1563 (63)	1076 (38)	1778 (62)	961 (36)	1718 (64)
Sophomores	855 (38)	1396 (62)	860 (38)	1409 (62)	877 (37)	1519 (63)	865 (38)	1400 (62)	959 (39)	1512 (61)
Juniors	821 (36)	1477 (64)	910 (39)	1408 (61)	867 (38)	1425 (62)	869 (37)	1494 (63)	899 (38)	1480 (62)
Seniors	893 (36)	1558 (64)	938 (36)	1666 (64)	1003 (38)	1618 (62)	1011 (38)	1639 (62)	988 (37)	1689 (63)
Unclassified Undergraduates <sup>1</sup>	145 (39)	224 (61)	151 (37)	260 (63)	157 (45)	193 (55)	134 (41)	195 (59)	134 (45)	166 (55)
SUBTOTAL	3578 (37)	6206 (63)	3694 (36)	6453 (64)	3803 (38)	6318 (62)	3955 (38)	6506 (62)	3941 (38)	6565 (62)
Graduates	151 (30)	347 (70)	155 (30)	370 (70)	173 (31)	394 (69)	193 (33)	392 (67)	177 (33)	352 (67)
Unclassified Graduates <sup>2</sup>	117 (11)	968 (89)	128 (12)	972 (88)	102 (12)	742 (88)	90 (15)	513 (85)	106 (15)	582 (85)
SUBTOTAL	268 (17)	1315 (83)	283 (17)	1342 (83)	275 (19)	1136 (81)	283 (24)	905 (76)	283 (23)	934 (77)
GRAND TOTAL	3846 (34)	7521 (66)	3977 (34)	7795 (66)	4078 (35)	7454 (65)	4238 (36)	7411 (64)	4224 (36)	7499 (64)

Notes:

<sup>1</sup>Unclassified undergraduates include high school students, students on probationary admission, transient students, and other non-degree seeking undergraduates.<sup>2</sup>Unclassified graduates include professional development, transient, probationary admission, and other non-degree seeking students.

Race Distribution of Students by Class

Fall 2011

Class	Non-Resident Alien		African American		American Indian/Alaskan		Asian		Native Hawaiian/Pacific Islander		Hispanic		White		Two or More Races		Unknown/Unreported	
	N	(%)	N	(%)	N	(%)	N	(%)	N	(%)	N	(%)	N	(%)	N	(%)	N	(%)
Freshmen	23	(1)	150	(5)	6	(0)	36	(1)	2	(0)	105	(4)	2423	(85)	84	(3)	25	(1)
Sophomores	15	(1)	135	(6)	0	(0)	31	(1)	8	(0)	71	(3)	1887	(83)	72	(3)	46	(2)
Juniors	13	(1)	129	(5)	4	(0)	36	(2)	3	(0)	97	(4)	1999	(85)	46	(2)	36	(2)
Seniors	14	(1)	153	(6)	11	(0)	42	(2)	7	(0)	73	(3)	2237	(84)	59	(2)	54	(2)
Unclassified																		
Undergraduates <sup>1</sup>	58	(18)	45	(14)	0	(0)	3	(1)	0	(0)	6	(2)	194	(59)	5	(2)	18	(5)
SUBTOTAL	123	(1)	612	(6)	21	(0)	148	(1)	20	(0)	352	(3)	8740	(84)	266	(3)	179	(2)
Graduates	16	(3)	21	(4)	3	(1)	9	(2)	1	(0)	10	(2)	500	(85)	11	(2)	14	(2)
Unclassified																		
Graduates <sup>2</sup>	8	(1)	44	(7)	0	(0)	6	(1)	0	(0)	14	(2)	474	(79)	5	(1)	52	(9)
SUBTOTAL	24	(2)	65	(5)	3	(0)	15	(1)	1	(0)	24	(2)	974	(82)	16	(1)	66	(6)
GRAND TOTAL	147	(1)	677	(6)	24	(0)	163	(1)	21	(0)	376	(3)	9714	(83)	282	(2)	245	(2)

Fall 2012

Class	Non-Resident Alien		African American		American Indian/Alaskan		Asian		Native Hawaiian/Pacific Islander		Hispanic		White		Two or More Races		Unknown/Unreported	
	N	(%)	N	(%)	N	(%)	N	(%)	N	(%)	N	(%)	N	(%)	N	(%)	N	(%)
Freshmen	16	(1)	166	(6)	4	(0)	35	(1)	1	(0)	120	(4)	2217	(83)	103	(4)	17	(1)
Sophomores	27	(1)	135	(5)	4	(0)	38	(2)	2	(0)	103	(4)	2062	(83)	77	(3)	23	(1)
Juniors	16	(1)	153	(6)	1	(0)	36	(2)	7	(0)	83	(3)	1968	(83)	64	(3)	51	(2)
Seniors	12	(0)	155	(6)	4	(0)	46	(2)	7	(0)	92	(3)	2264	(85)	55	(2)	42	(2)
Unclassified																		
Undergraduates <sup>1</sup>	70	(23)	34	(11)	2	(1)	4	(1)	0	(0)	5	(2)	167	(56)	6	(3)	12	(4)
SUBTOTAL	141	(1)	643	(6)	15	(0)	159	(2)	17	(0)	403	(4)	8678	(83)	305	(3)	145	(1)
Graduates	13	(2)	24	(5)	1	(0)	7	(1)	1	(0)	18	(3)	448	(85)	8	(2)	9	(2)
Unclassified																		
Graduates <sup>2</sup>	8	(1)	60	(9)	1	(0)	3	(0)	1	(0)	19	(3)	561	(82)	4	(1)	31	(5)
SUBTOTAL	21	(2)	84	(7)	2	(0)	10	(1)	2	(0)	37	(3)	1009	(83)	12	(1)	40	(3)
GRAND TOTAL	162	(1)	727	(6)	17	(0)	169	(1)	19	(0)	440	(4)	9687	(83)	317	(3)	185	(2)

Age Distribution by Type of Student  
Fall 2012

Degree Candidates

Non-Degree

Total

Age*	Freshmen		Sophomores		Juniors		Seniors		Graduates		Undergraduate		Graduate		All Levels	
	N	(%)	N	(%)	N	(%)	N	(%)	N	(%)	N	(%)	N	(%)	N	(%)
Under 18	49	(1.8)	1	(0.0)							40	(13.3)			90	(0.8)
18-19	2,405	(89.8)	1,339	(54.2)	88	(3.7)	8	(0.3)			15	(5.0)			3,855	(32.9)
20-21	186	(6.9)	893	(36.1)	1,658	(69.7)	1,270	(47.4)	7	(1.3)	41	(13.7)	1	(0.1)	4,056	(34.6)
22-24	21	(0.8)	123	(5.0)	397	(16.7)	992	(37.1)	172	(32.5)	75	(25.0)	31	(4.5)	1,811	(15.4)
25-29	8	(0.3)	71	(2.9)	139	(5.8)	249	(9.3)	225	(42.5)	40	(13.3)	102	(14.8)	834	(7.1)
30-34	5	(0.2)	23	(0.9)	42	(1.8)	84	(3.1)	61	(11.5)	21	(7.0)	91	(13.2)	327	(2.8)
35-39	3	(0.1)	7	(0.3)	24	(1.0)	39	(1.5)	22	(4.2)	3	(1.0)	88	(12.8)	186	(1.6)
40-49	1	(0.0)	10	(0.4)	21	(0.9)	24	(0.9)	26	(4.9)	6	(2.0)	180	(26.2)	268	(2.3)
50-64	1	(0.0)	3	(0.1)	7	(0.3)	8	(0.3)	14	(2.6)	20	(6.7)	186	(27.0)	239	(2.0)
65 & over			1	(0.0)	3	(0.1)	3	(0.1)	2	(0.4)	39	(13.0)	9	(1.3)	57	(0.5)
TOTAL	2,679	(100.0)	2,471	(100.0)	2,379	(100.0)	2,677	(100.0)	529	(100.0)	300	(100.0)	688	(100.0)	11,723	(100.0)

TYPE OF STUDENT

TYPE OF STUDENT	MEAN AGE	MEDIAN AGE	MODE AGE	RANGE
Freshmen	18.5	18	18	17-52
Sophomores	20.2	19	19	17-65
Juniors	21.8	21	20	18-66
Seniors	22.9	22	21	19-68
Graduate	28.2	26	24	21-69
Unclassified Undergraduates	31.7	23	17	16-78
Unclassified Graduates	41.6	41	42	20-79
College-Wide	22.7	20	19	16-79

Mean = Arithmetic Mean/Average  
 Median = The middle value in the distribution, above and below which lie an equal number of values.  
 Mode = The value occurring most frequently.  
 Range = The interval between the smallest and largest values.

\*Age calculated as of October 1, 2012.

Geographic Distribution of Students\*  
Fall 2008 - Fall 2012

	Fall 2008	Fall 2009	Fall 2010	Fall 2011	Fall 2012
<b>South Carolina Residents</b>	7,199 (63%)	7,499 (64%)	7,254 (63%)	7,149 (61%)	7,052 (60%)
<b>Out-of-State Students</b>	3,877 (34%)	4,010 (34%)	3,991 (35%)	4,263 (37%)	4,366 (37%)
<b>International Students</b>	291 (3%)	263 (2%)	287 (2%)	237 (2%)	305 (3%)
Special Population Included Above: <b>Berkeley, Charleston, Dorchester Residents</b>	3,302 (29%)	3,407 (29%)	3,439 (30%)	3,360 (29%)	3,215 (27%)
Abbeville	12	8	6	5	7
Aiken	218	179	186	160	169
Allendale	3	3	5	2	3
Anderson	115	125	126	119	133
Bamberg	32	7	5	1	3
Barnwell	14	36	33	11	10
Beaufort	283	356	263	255	235
Berkeley	526	491	526	552	501
Calhoun	9	7	5	6	5
Charleston	2,282	2,417	2,423	2,348	2,230
Cherokee	7	10	9	16	15
Chester	14	10	15	9	11
Chesterfield	26	16	25	30	34
Clarendon	23	28	19	17	29
Colleton	66	41	38	35	33
Darlington	38	42	51	53	63
Dillon	24	26	22	14	17
Dorchester	494	499	490	460	484
Edgefield	22	24	27	21	24
Fairfield	6	7	7	8	8
Florence	110	165	130	140	121
Georgetown	129	114	84	91	92
Greenville	510	480	500	519	557
Greenwood	60	69	49	44	38
Hampton	11	5	5	4	3
Horry	326	336	336	382	372
Jasper	16	17	14	10	10
Kershaw	72	66	48	53	50
Lancaster	38	41	42	54	58
Laurens	17	22	26	24	21
Lee	8	10	6	9	10
Lexington	348	399	304	306	350
Marion	52	34	37	29	25
Marlboro	7	8	12	8	8
McCormick	3	3	1	1	0
Newberry	27	35	32	28	22
Oconee	41	52	41	47	35
Orangeburg	85	64	71	59	54
Pickens	55	62	73	90	78
Richland	398	456	426	424	418
Saluda	3	7	4	5	8
Spartanburg	194	201	183	187	193
Sumter	168	171	171	119	113
Union	10	8	9	6	9
Williamsburg	14	17	17	17	11
York	283	323	352	361	370
Unknown county		2		10	12
<b>TOTAL</b>	<b>7,199</b>	<b>7,499</b>	<b>7,254</b>	<b>7,149</b>	<b>7,052</b>

\*Students with SC residency and missing counties are assigned to the county of their permanent address.



### South Carolina Geographic Distribution Fall 2012

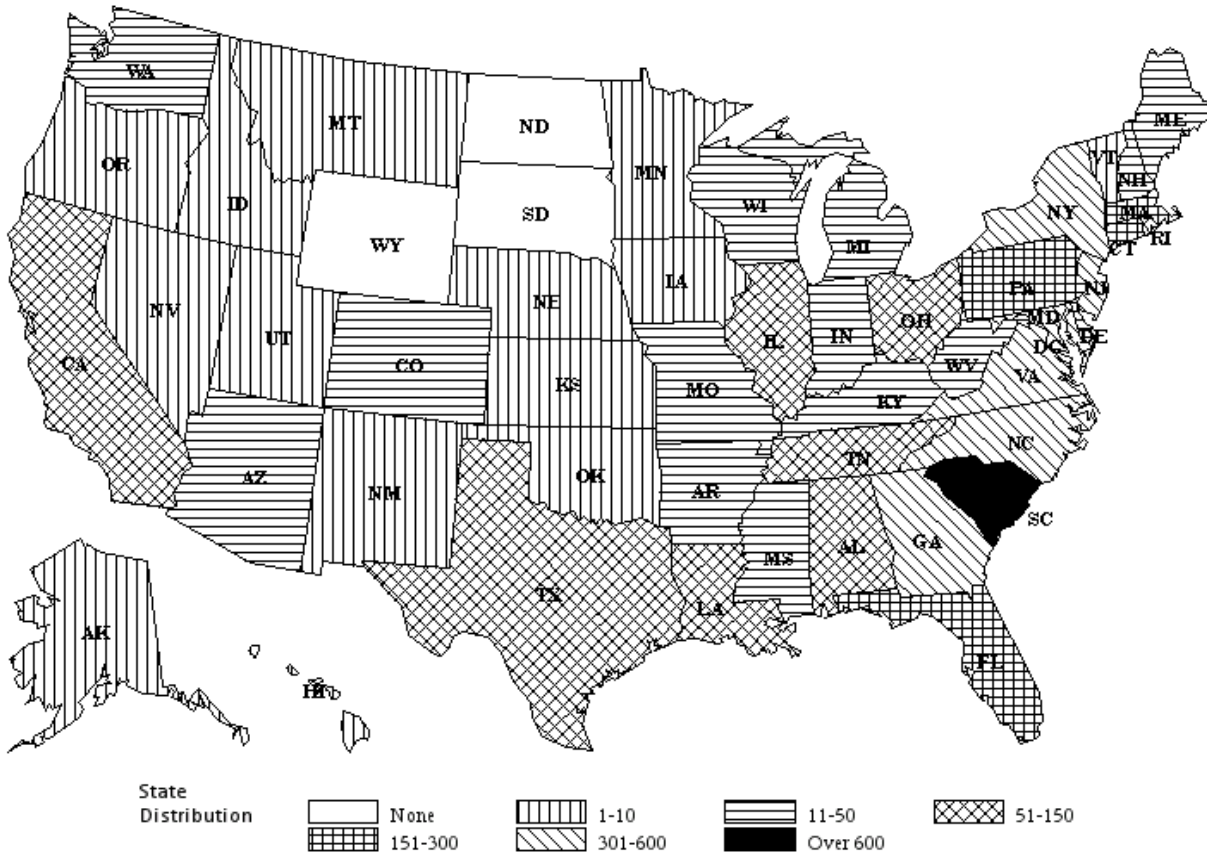


State Residents	7,052
Out of State	4,366
Foreign	<u>305</u>
Total	11,723

County Frequencies

Charleston	2,230	Darlington	63	Unknown County	12
Greenville	557	Lancaster	58	Chester	11
Berkeley	501	Orangeburg	54	Williamsburg	11
Dorchester	484	Kershaw	50	Barnwell	10
Richland	418	Greenwood	38	Jasper	10
Horry	372	Oconee	35	Lee	10
York	370	Chesterfield	34	Union	9
Lexington	350	Colleton	33	Fairfield	8
Beaufort	235	Clarendon	29	Marlboro	8
Spartanburg	193	Marion	25	Saluda	8
Aiken	169	Edgefield	24	Abbeville	7
Anderson	133	Newberry	22	Calhoun	5
Florence	121	Laurens	21	Allendale	3
Sumter	113	Dillon	17	Bamberg	3
Georgetown	92	Cherokee	15	Hampton	3
Pickens	78				

## United States Geographic Distribution Fall 2012



State Frequencies

South Carolina	7,052	Rhode Island	56	Vermont	10
North Carolina	420	Kentucky	44	Kansas	9
New Jersey	410	Michigan	41	Oregon	6
Georgia	364	Colorado	39	Utah	6
New York	344	Missouri	33	Iowa	5
Virginia	338	District of Columbia	31	Oklahoma	5
Maryland	321	Maine	31	Hawaii	4
Connecticut	299	Unknown	28	Nevada	4
Pennsylvania	280	Indiana	23	U.S. Virgin Islands	4
Massachusetts	244	New Hampshire	20	New Mexico	3
Florida	185	Delaware	19	Nebraska	2
Ohio	146	Arizona	16	Puerto Rico	2
Texas	106	Mississippi	13	Alaska	1
California	103	Washington	13	Idaho	1
Tennessee	99	Arkansas	12	Montana	1
Illinois	70	Wisconsin	12	Wyoming	0
Louisiana	63	West Virginia	11		
Alabama	59	Minnesota	10		

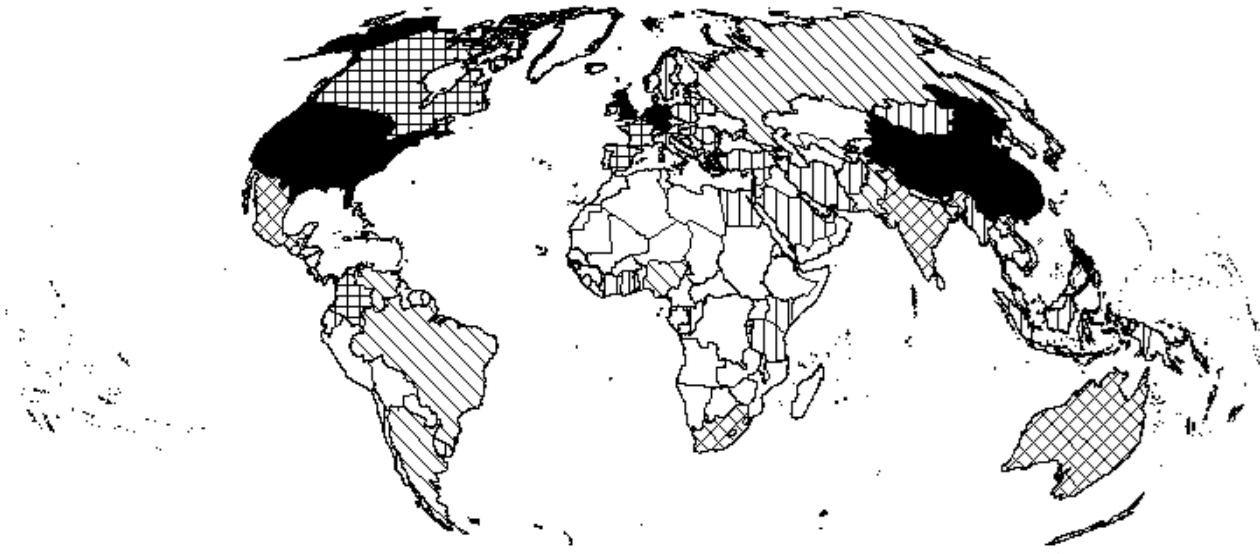
### Geographic Distribution of Students by State Fall 2012

Alabama	59	Louisiana	63	Oklahoma	5
Alaska	1	Maine	31	Oregon	6
Arizona	16	Maryland	321	Pennsylvania	280
Arkansas	12	Massachusetts	244	Puerto Rico	2
California	103	Michigan	41	Rhode Island	56
Colorado	39	Minnesota	10	South Carolina	7,052
Connecticut	299	Mississippi	13	South Dakota	0
Delaware	19	Missouri	33	Tennessee	99
District of Columbia	31	Montana	1	Texas	106
Florida	185	Nebraska	2	Utah	6
Georgia	364	Nevada	4	Vermont	10
Hawaii	4	New Hampshire	20	Virgin Islands	4
Idaho	1	New Jersey	410	Virginia	338
Illinois	70	New Mexico	3	Washington	13
Indiana	23	New York	344	West Virginia	11
Iowa	5	North Carolina	420	Wisconsin	12
Kansas	9	North Dakota	0	Wyoming	0
Kentucky	44	Ohio	146	Unknown	28

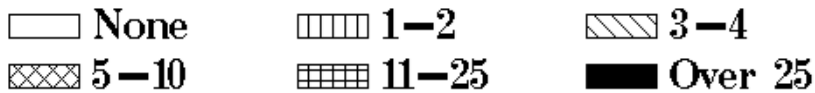
### Geographic Origin by Country Fall 2012

Afghanistan	1	France	14	Panama	1
Argentina	4	Germany	46	Poland	1
Australia	5	Ghana	2	Romania	2
Austria	1	Guatemala	3	Philippines	2
Bermuda	5	Hungary	2	Russia	4
Belgium	3	Indonesia	1	Saudi Arabia	1
Bahamas	6	India	5	South Africa	5
Belize	1	Iran	1	Singapore	3
Bosnia and Herzegovina	1	Ireland	2	Spain	11
Belarus	2	Israel	1	Sweden	2
Bulgaria	1	Italy	2	Syria	1
Brazil	3	Cote D'Ivoire	2	Trinidad and Tobago	1
Burma	1	Japan	5	Taiwan	5
Canada	18	Kenya	1	Tanzania	1
China	31	Lithuania	2	Turkey	2
Chile	2	Mexico	6	United Arab Emirates	1
Colombia	14	Mongolia	1	United Kingdom	31
Congo	1	Nigeria	3	United States	11,418
Costa Rica	2	Netherlands	10	Uruguay	1
Denmark	1	New Zealand	2	Venezuela	4
Ecuador	1	Pakistan	3	Vietnam	7
Egypt	1				

World Geographic Distribution  
Fall 2012



World  
Distribution



Country of Origin Frequencies

United States	11,418	Brazil	3	Austria	1
Germany	46	Guatemala	3	Belize	1
China	31	Nigeria	3	Bosnia & Herzegovina	1
United Kingdom	31	Pakistan	3	Burma	1
Canada	18	Singapore	3	Bulgaria	1
Colombia	14	Belarus	2	Congo	1
France	14	Chile	2	Denmark	1
Spain	11	Costa Rica	2	Exuador	1
Netherlands	10	Ireland	2	Egypt	1
Vietnam	7	Ghana	2	Indonesia	1
Bahamas	6	Hungary	2	Iran	1
Mexico	6	Italy	2	Israel	1
Australia	5	Cote d'Ivoire	2	Kenya	1
Bermuda	5	Lithuania	2	Mongolia	1
India	5	New Zealand	2	Poland	1
Japan	5	Romania	2	Panama	1
South Africa	5	Philippines	2	Saudi Arabia	1
Taiwan	5	Sweden	2	Syria	1
Argentina	4	Turkey	2	Trinidad & Tobago	1
Russia	4	United Arab Emirates	1	Tanzania	1
Venezuela	4	Afghanistan	1	Uruguay	1
Belgium	3				

**Summer Sessions  
Headcount Enrollment and FTE Students  
2006 - 2012**

	Maymester			May Evening			Summer I Day			Summer Evening			Summer II Day			Total All Terms			
	UG	G	Total	UG	G	Total	UG	G	Total	UG	G	Total	UG	G	Total	UG	G	Total	
H	2006	1279	56	1335	415	248	663	1218	794	2012	315	137	452	1189	327	1516	4416	1562	5978
E	2007	1263	28	1291	358	245	603	1332	721	2053	243	77	320	1116	546	1662	4312	1617	5929
A	2008	1213	41	1254	342	185	527	1301	1047	2348	190	68	258	1156	514	1670	4202	1855	6057
D	2009	1060	78	1138	298	176	474	1151	1000	2151	139	72	211	1055	367	1422	3703	1693	5396
C	2010	1131	51	1182	284	185	469	1196	1116	2312	98	57	155	1116	266	1382	3825	1675	5500
O	2011	1081	42	1123	355	159	514	1180	1131	2311	110	71	181	1256	412	1668	3982	1815	5797
U	2012	1138	34	1172	413	153	566	1268	949	2217	125	73	198	1244	431	1675	4188	1640	5828
N																			
T																			

	Maymester			May Evening			Summer I Day			Summer Evening			Summer II Day			Totals, All Terms			
	UG	G	Total	UG	G	Total	UG	G	Total	UG	G	Total	UG	G	Total	UG	G	Total	
F	2006	270	14	284	99	68	167	304	210	514	67	37	104	291	76	367	1031	405	1436
T	2007	269	7	276	91	71	162	334	202	536	53	21	74	276	146	422	1023	447	1470
E	2008	257	11	268	80	53	133	331	281	612	39	18	57	283	125	408	990	488	1478
S	2009	220	26	246	79	52	131	282	243	525	28	19	47	267	89	356	876	429	1305
T	2010	243	15	258	81	56	137	298	243	541	21	16	37	286	55	341	929	385	1314
U	2011	225	11	236	105	48	153	298	265	563	23	19	42	328	103	431	979	446	1425
D	2012	238	9	247	112	49	161	315	240	555	25	12	37	319	104	423	1009	414	1423
E																			
N																			
S																			



# *Graduation and Retention*





**Retention Status of New Freshmen  
Fall 2003 - Fall 2012  
Full-Time Only**

Term Cohort Originated	Fall 2003	Fall 2004	Fall 2005	Fall 2006	Fall 2007	Fall 2008	Fall 2009	Fall 2010	Fall 2011	Fall 2012
Fall 2003	1669	1390 (83.3%)	1232 (73.8%)	1147 (68.7%)	282 (16.9%)	58 (3.5%)	25 (1.5%)	15 (0.9%)	12 (0.7%)	10 (0.6%)
Enrolled										
Graduated		0 (0.0%)	0 (0.0%)	23 (1.4%)	844 (50.6%)	1057 (63.3%)	1092 (65.4%)	1105 (66.2%)	1111 (66.6%)	1118 (67.0%)
Discontinued*		279 (16.7%)	437 (26.2%)	499 (29.9%)	543 (32.5%)	554 (33.2%)	552 (33.1%)	549 (32.9%)	546 (32.7%)	541 (32.4%)
Fall 2004		1722	1432 (83.2%)	1269 (73.7%)	1169 (67.9%)	217 (12.6%)	54 (3.1%)	24 (1.4%)	20 (1.2%)	10 (0.6%)
Enrolled										
Graduated			0 (0.0%)	0 (0.0%)	31 (1.8%)	961 (55.8%)	1122 (65.2%)	1153 (67.0%)	1161 (67.4%)	1170 (67.9%)
Discontinued*			290 (16.8%)	453 (26.3%)	522 (30.3%)	544 (31.6%)	546 (31.7%)	545 (31.6%)	541 (31.4%)	542 (31.5%)
Fall 2005			1780	1446 (81.2%)	1261 (70.8%)	1195 (67.1%)	239 (13.4%)	52 (2.9%)	27 (1.5%)	20 (1.1%)
Enrolled										
Graduated				0 (0.0%)	1 (0.1%)	26 (1.5%)	956 (53.7%)	1129 (63.4%)	1155 (64.9%)	1167 (65.6%)
Discontinued*				334 (18.8%)	518 (29.1%)	559 (31.4%)	585 (32.9%)	599 (33.7%)	598 (33.6%)	593 (33.3%)
Fall 2006				1779	1457 (81.9%)	1326 (74.5%)	1245 (69.9%)	204 (11.5%)	34 (1.9%)	17 (1.0%)
Enrolled										
Graduated					0 (0.0%)	1 (0.1%)	33 (1.9%)	1047 (58.8%)	1206 (67.8%)	1232 (69.2%)
Discontinued*					322 (18.1%)	452 (25.4%)	501 (28.1%)	528 (29.7%)	539 (30.3%)	530 (29.8%)
Fall 2007					1796	1441 (80.2%)	1327 (73.9%)	1231 (68.5%)	233 (13.0%)	57 (3.2%)
Enrolled										
Graduated						0 (0.0%)	0 (0.0%)	29 (1.6%)	981 (54.6%)	1154 (64.3%)
Discontinued*						355 (19.8%)	469 (26.1%)	536 (29.8%)	582 (32.4%)	585 (32.6%)
Fall 2008						1790	1484 (82.9%)	1325 (74.0%)	1251 (69.9%)	230 (12.8%)
Enrolled										
Graduated							0 (0.0%)	0 (0.0%)	28 (1.6%)	1006 (56.2%)
Discontinued*							306 (17.1%)	465 (26.0%)	511 (28.5%)	554 (30.9%)
Fall 2009							1894	1556 (82.2%)	1405 (74.2%)	1328 (70.1%)
Enrolled										
Graduated								0 (0.0%)	0 (0.0%)	43 (2.3%)
Discontinued*								338 (17.8%)	489 (25.8%)	523 (27.6%)
Fall 2010								1730	1439 (83.2%)	1319 (76.2%)
Enrolled										
Graduated									0 (0.0%)	0 (0.0%)
Discontinued*									291 (16.8%)	411 (23.8%)
Fall 2011									2047	1681 (82.1%)
Enrolled										
Graduated										0 (0.0%)
Discontinued*										366 (17.9%)
Fall 2012										1930
Enrolled										

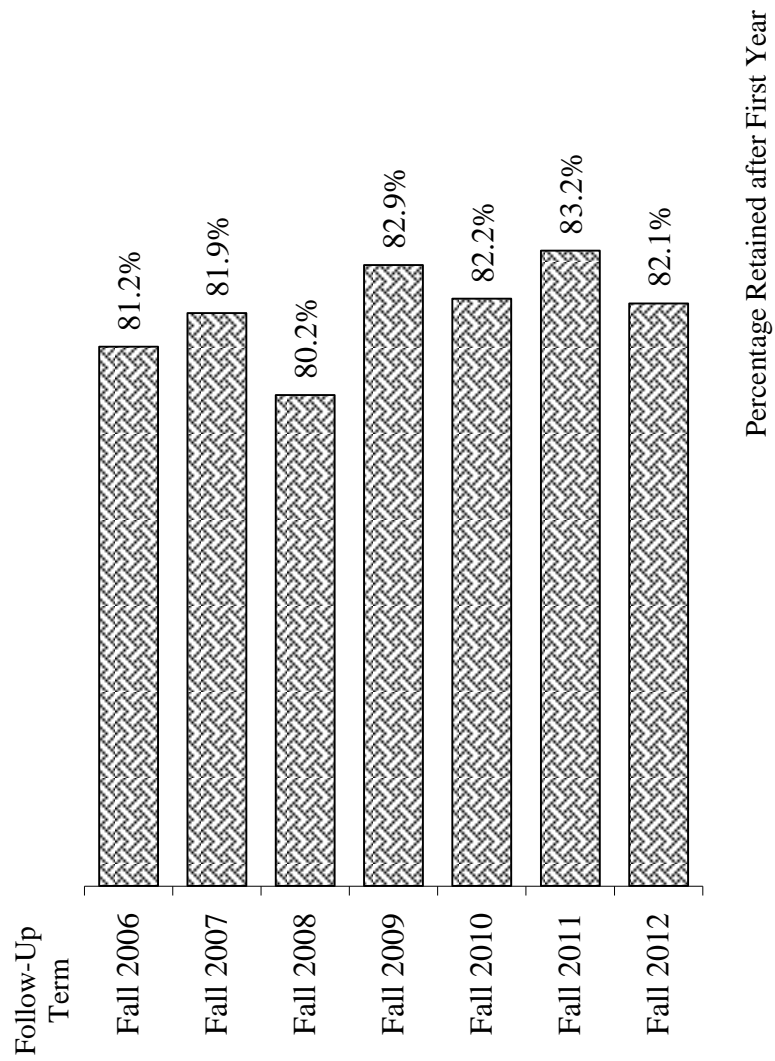
\* Percentage discontinued represents all students not enrolled at the College, either temporarily or permanently. Therefore, students transferring to another institution, students requesting leave of absence, students voluntarily withdrawing, and students who are dismissed are included as discontinued.

Retention Status of New Freshmen  
Fall 2003 - Fall 2012  
African-American Only

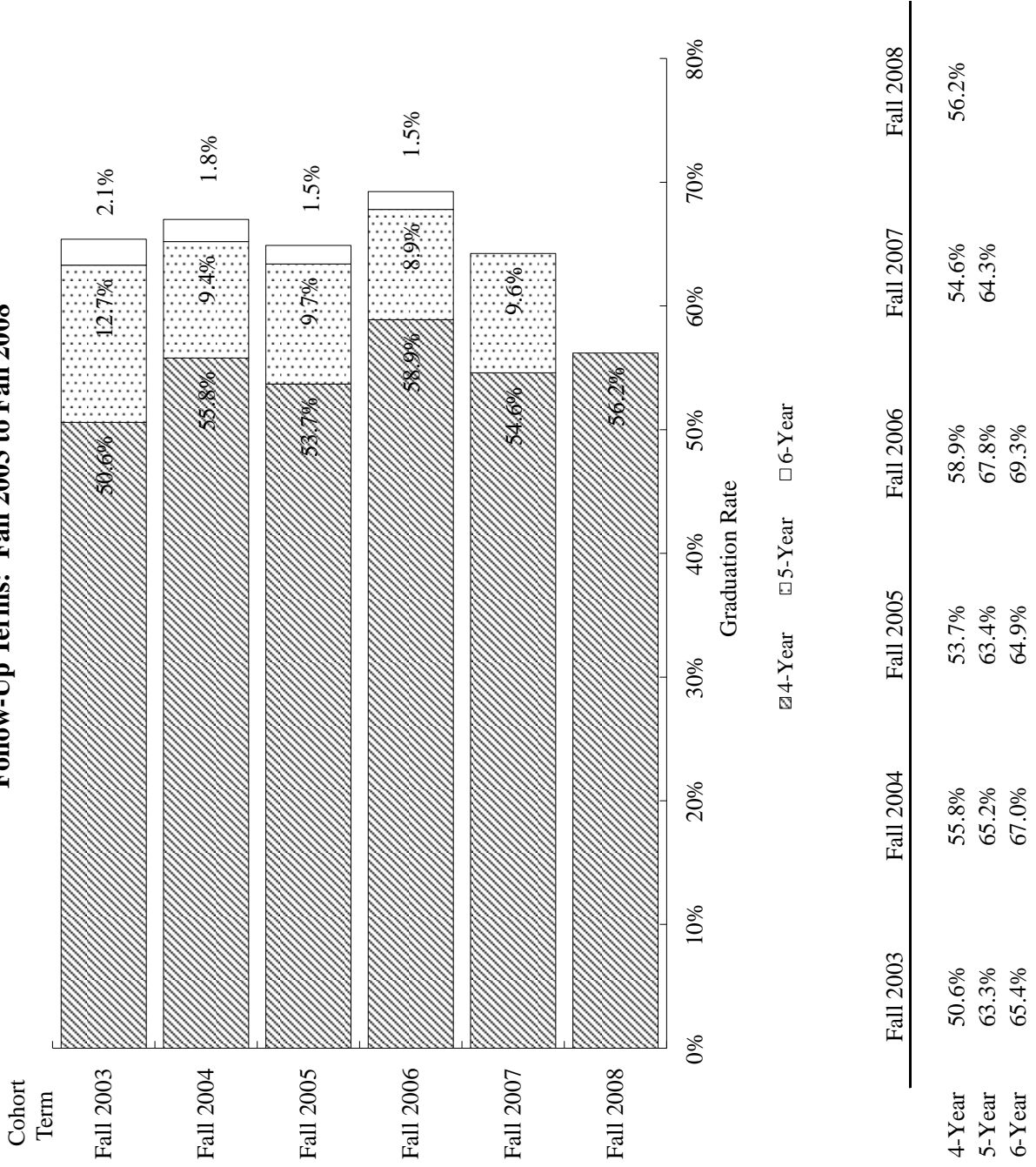
Term Cohort Originated	Fall_2003	Fall_2004	Fall_2005	Fall_2006	Fall_2007	Fall_2008	Fall_2009	Fall_2010	Fall_2011	Fall_2012
Fall 2003	71	61 (85.9%) 0 (0.0%) 10 (14.1%)	58 (81.7%) 0 (0.0%) 13 (18.3%)	50 (70.4%) 0 (0.0%) 21 (29.6%)	13 (18.3%) 31 (43.7%) 27 (38.0%)	1 (1.4%) 42 (59.2%) 28 (39.4%)	0 (0.0%) 42 (59.2%) 29 (40.8%)	1 (1.4%) 42 (59.2%) 28 (39.4%)	2 (2.8%) 42 (59.2%) 27 (38.0%)	2 (2.8%) 43 (60.6%) 26 (36.6%)
Fall 2004		53	47 (88.7%) 0 (0.0%) 6 (11.3%)	42 (79.2%) 0 (0.0%) 11 (20.8%)	39 (73.6%) 2 (3.8%) 12 (22.6%)	9 (17.0%) 31 (58.5%) 13 (24.5%)	2 (3.8%) 37 (69.8%) 14 (26.4%)	0 (0.0%) 39 (73.6%) 14 (26.4%)	1 (1.9%) 39 (73.6%) 13 (24.5%)	1 (1.9%) 39 (73.6%) 13 (24.5%)
Fall 2005			68	51 (75.0%) 0 (0.0%) 17 (25.0%)	39 (57.4%) 0 (0.0%) 29 (42.6%)	35 (51.5%) 1 (1.5%) 32 (47.1%)	18 (26.5%) 20 (29.4%) 30 (44.1%)	6 (8.8%) 30 (44.1%) 32 (47.1%)	4 (5.9%) 33 (48.5%) 31 (45.6%)	4 (5.9%) 33 (48.5%) 31 (45.6%)
Fall 2006				54	45 (83.3%) 0 (0.0%) 9 (16.7%)	40 (74.1%) 0 (0.0%) 14 (25.9%)	37 (68.5%) 1 (1.9%) 16 (29.6%)	10 (18.5%) 26 (48.1%) 18 (33.3%)	3 (5.6%) 31 (57.4%) 20 (37.0%)	3 (5.6%) 33 (61.1%) 18 (33.3%)
Fall 2007				71		58 (81.7%) 0 (0.0%) 13 (18.3%)	57 (80.3%) 0 (0.0%) 14 (19.7%)	52 (73.2%) 0 (0.0%) 19 (26.8%)	16 (22.5%) 29 (40.8%) 26 (36.6%)	6 (8.5%) 36 (50.7%) 29 (40.8%)
Fall 2008						51	44 (86.3%) 0 (0.0%) 7 (13.7%)	40 (78.4%) 0 (0.0%) 11 (21.6%)	38 (74.5%) 1 (2.0%) 12 (23.5%)	13 (25.5%) 27 (52.9%) 11 (21.6%)
Fall 2009							68	58 (85.3%) 0 (0.0%) 10 (14.7%)	51 (75.0%) 0 (0.0%) 17 (25.0%)	52 (76.5%) 1 (1.5%) 15 (22.1%)
Fall 2010							63	56 (88.9%) 0 (0.0%) 7 (11.1%)	56 (88.9%) 0 (0.0%) 7 (11.1%)	53 (84.1%) 0 (0.0%) 10 (15.9%)
Fall 2011							83		83	63 (75.9%) 0 (0.0%) 20 (24.1%)
Fall 2012										84

\* Percentage discontinued represents all students not enrolled at the College, either temporarily or permanently. Therefore, students transferring to another institution, students requesting leave of absence, students voluntarily withdrawing, and students who are dismissed are included as discontinued.

First-Year Retention Rates  
Full-Time Freshmen



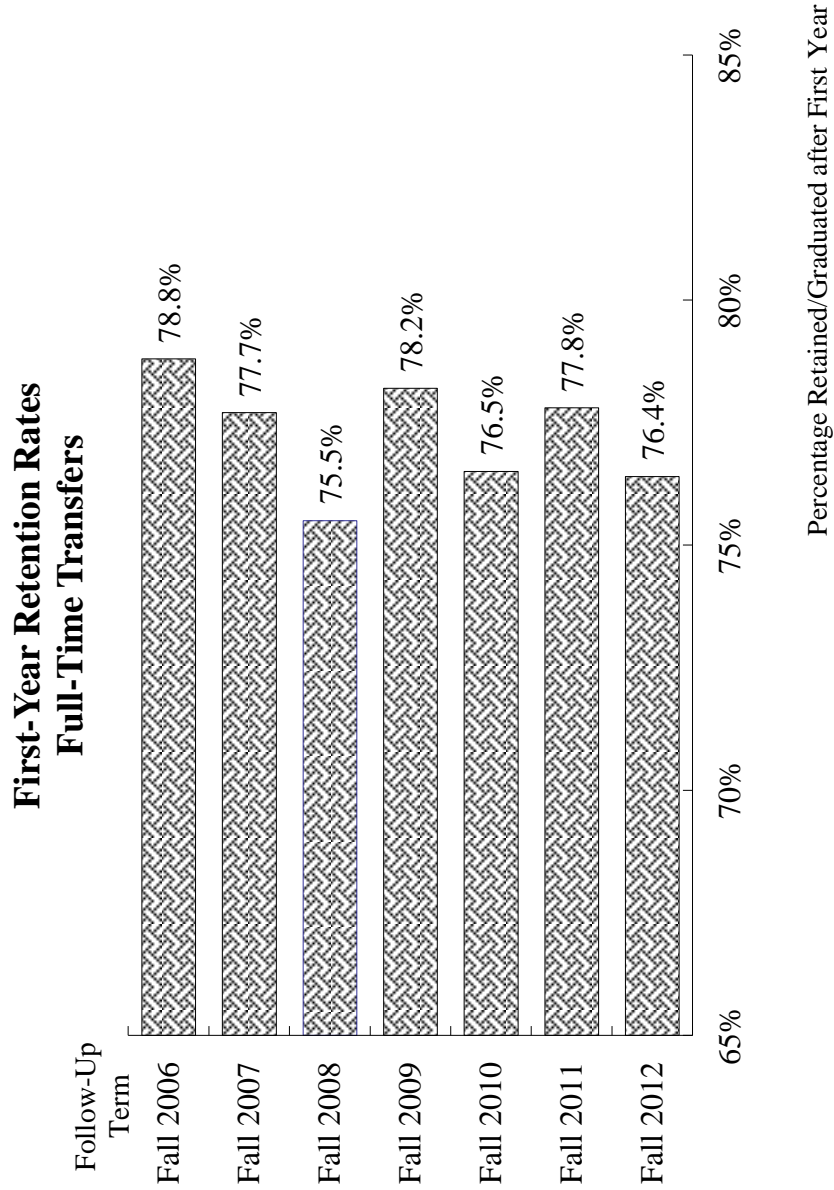
**Graduation Rates of New Full-Time Freshmen  
Follow-Up Terms: Fall 2003 to Fall 2008**



Retention Status of New Full-Time Transfers  
Fall 2003 - Fall 2012

Term Cohort Originated	Fall 2003	Fall 2004	Fall 2005	Fall 2006	Fall 2007	Fall 2008	Fall 2009	Fall 2010	Fall 2011	Fall 2012
Fall 2003 Enrolled	71	61 (85.9%)	58 (81.7%)	50 (70.4%)	13 (18.3%)	1 (1.4%)	0 (0.0%)	1 (1.4%)	2 (2.8%)	2 (2.8%)
Fall 2003 Graduated		0 (0.0%)	0 (0.0%)	0 (0.0%)	31 (43.7%)	42 (59.2%)	42 (59.2%)	42 (59.2%)	42 (59.2%)	43 (60.6%)
Fall 2003 Discontinued*		10 (14.1%)	13 (18.3%)	21 (29.6%)	27 (38.0%)	28 (39.4%)	29 (40.8%)	28 (39.4%)	27 (38.0%)	26 (36.6%)
Fall 2004 Enrolled		53	47 (88.7%)	42 (79.2%)	39 (73.6%)	9 (17.0%)	2 (3.8%)	0 (0.0%)	1 (1.9%)	1 (1.9%)
Fall 2004 Graduated			0 (0.0%)	0 (0.0%)	2 (3.8%)	31 (58.5%)	37 (69.8%)	39 (73.6%)	39 (73.6%)	39 (73.6%)
Fall 2004 Discontinued*			6 (11.3%)	11 (20.8%)	12 (22.6%)	13 (24.5%)	14 (26.4%)	14 (26.4%)	13 (24.5%)	13 (24.5%)
Fall 2005 Enrolled			68	51 (75.0%)	39 (57.4%)	35 (51.5%)	18 (26.5%)	6 (8.8%)	4 (5.9%)	4 (5.9%)
Fall 2005 Graduated				0 (0.0%)	0 (0.0%)	1 (1.5%)	20 (29.4%)	30 (44.1%)	33 (48.5%)	33 (48.5%)
Fall 2005 Discontinued*				17 (25.0%)	29 (42.6%)	32 (47.1%)	30 (44.1%)	32 (47.1%)	31 (45.6%)	31 (45.6%)
Fall 2006 Enrolled				54	45 (83.3%)	40 (74.1%)	37 (68.5%)	10 (18.5%)	3 (5.6%)	3 (5.6%)
Fall 2006 Graduated					0 (0.0%)	0 (0.0%)	1 (1.9%)	26 (48.1%)	31 (57.4%)	33 (61.1%)
Fall 2006 Discontinued*					9 (16.7%)	14 (25.9%)	16 (29.6%)	18 (33.3%)	20 (37.0%)	18 (33.3%)
Fall 2007 Enrolled					71	58 (81.7%)	57 (80.3%)	52 (73.2%)	16 (22.5%)	6 (8.5%)
Fall 2007 Graduated						0 (0.0%)	0 (0.0%)	0 (0.0%)	29 (40.8%)	36 (50.7%)
Fall 2007 Discontinued*						13 (18.3%)	14 (19.7%)	19 (26.8%)	26 (36.6%)	29 (40.8%)
Fall 2008 Enrolled						51	44 (86.3%)	40 (78.4%)	38 (74.5%)	13 (25.5%)
Fall 2008 Graduated							0 (0.0%)	0 (0.0%)	1 (2.0%)	27 (52.9%)
Fall 2008 Discontinued*							7 (13.7%)	11 (21.6%)	12 (23.5%)	11 (21.6%)
Fall 2009 Enrolled							68	58 (85.3%)	51 (75.0%)	52 (76.5%)
Fall 2009 Graduated								0 (0.0%)	0 (0.0%)	1 (1.5%)
Fall 2009 Discontinued*								10 (14.7%)	17 (25.0%)	15 (22.1%)
Fall 2010 Enrolled								63	56 (88.9%)	53 (84.1%)
Fall 2010 Graduated									0 (0.0%)	0 (0.0%)
Fall 2010 Discontinued*									7 (11.1%)	10 (15.9%)
Fall 2011 Enrolled									83	63 (75.9%)
Fall 2011 Graduated										0 (0.0%)
Fall 2011 Discontinued*										20 (24.1%)
Fall 2012 Enrolled										84

\* Percentage discontinued represents all students not enrolled at the College, either temporarily or permanently. Therefore, students transferring to another institution, students requesting leave of absence, students voluntarily withdrawing, and students who are dismissed are included as discontinued.



# *Academics*





**Academic Subject Areas and Degrees Offered  
Spring 2013**

Undergraduate

Accounting	A.B., B.S.	Historic Preservation & Community Planning	A.B., B.A.
Anthropology	A.B., B.S.	History	A.B., B.A.
Art History	A.B., B.A.	Hospitality and Tourism Mgmt	A.B., B.S.
Arts Management	A.B., B.A.	International Business	A.B., B.S.
Astronomy	A.B., B.A.	International Studies	A.B., B.A.
Astrophysics	A.B., B.S.	Jewish Studies	A.B., B.A.
Athletic Training	A.B., B.S.	Latin American and Caribbean Studies	A.B., B.A.
Biochemistry	A.B., B.S.	Marine Biology	A.B., B.S.
Biology	A.B., B.A., B.S.	Mathematics	A.B., B.A., B.S.
Business Administration	A.B., B.S.	Middle Level Education	A.B., B.S.
Chemistry	A.B., B.A., B.S.	Music	A.B., B.A.
Classics	A.B., B.A.	Philosophy	A.B., B.A.
Communication	A.B., B.A.	Physical Education and Health	A.B., B.S.
Computer Information Systems	A.B., B.S.	Physics	A.B., B.A., B.S.
Computer Science	A.B., B.A., B.S.	Political Science	A.B., B.A.
Computing in the Arts	A.B., B.A.	Psychology	A.B., B.A., B.S.
Dance	A.B., B.A.	Public Health	A.B., B.S.
Discovery Informatics	A.B., B.S.	Religious Studies	A.B., B.A.
Early Childhood Education	A.B., B.S.	Secondary Education	B.S.
Economics	A.B., B.S.	Sociology	A.B., B.S.
Elementary Education	A.B., B.S.	Spanish	A.B., B.A.
English	A.B., B.A.	Special Education	A.B., B.S.
Exercise Science	A.B., B.S.	Studio Art	A.B., B.A.
French & Francophone Studies	A.B., B.A.	Theatre	A.B., B.A.
Geology	A.B., B.A., B.S.	Urban Studies	A.B., B.A.
German	A.B., B.A.	Women's and Gender Studies	A.B., B.A.

Graduate

Accounting	M.S.	Languages	M.Ed.
Arts Management	CER	Marine Biology	M.S.
Business Administration	M.B.A.	Mathematics	M.S.
Communication	M.A.	Middle Grades Education	M.A.T.
Computer and Information Sciences	M.S.	Operations Research	CER
Early Childhood Education	M.A.T.	Performing Arts	M.A.T.
Elementary Education	M.A.T.	Public Administration	M.P.A.
English	M.A.	Science and Math for Teachers	M.Ed.
English to Speakers of Other Languages	CER	Service-Oriented Computing	CER
Environmental Studies	M.S.	Special Education	M.A.T., CER
Gifted and Talented Education	CER	Statistics	CER
Historic Preservation	M.S.	Teaching, Learning and Advocacy	M.Ed.
History	M.A.	Urban and Regional Planning	CER

---

A.B.	Artium Baccalaureatus (classical studies)
B.A.	Bachelor of Arts
B.S.	Bachelor of Science
CER	Post-baccalaureate Certificate

---

M.A.	Master of Arts
M.B.A.	Master of Business Administration
M.A.T.	Master of Arts in Teaching
M.Ed.	Master of Education
M.P.A.	Master of Public Administration
M.S.	Master of Science

**Average Credit Hour Load  
Fall 2008 - Fall 2012**

	<u>Fall 2008</u>	<u>Fall 2009</u>	<u>Fall 2010</u>	<u>Fall 2011</u>	<u>Fall 2012</u>
Degree-Seeking					
Undergraduates*	14.64	14.70	14.67	14.71	14.69
Grad Students	7.58	7.63	8.10	7.79	7.75
Non Degree-Seeking					
Undergraduates	5.49	5.49	5.00	5.70	5.75
Grad Students	3.51	3.03	3.43	4.04	3.91
All Students	12.86	12.87	13.14	13.42	13.38

\* Includes provisionally admitted Freshmen.

**Undergraduate and Graduate Majors  
Fall 2012**

Declared Majors	Undergraduate		Graduate	
	N	%	N	%
Accounting	109	1.5%	27	4.9%
Anthropology	123	1.7%		
Art History	96	1.3%		
Arts Management	173	2.4%		
Astronomy	5	0.1%		
Astrophysics	30	0.4%		
Athletic Training	53	0.7%		
Biochemistry	138	1.9%		
Biology	841	11.6%		
Business Administration	385	5.3%	30	5.5%
Chemistry	96	1.3%		
Classics	36	0.5%		
Communication	647	8.9%	21	3.8%
Computer and Information Sciences			21	3.8%
Computer Information Systems	22	0.3%		
Computer Science	190	2.6%		
Commputing in the Arts	44	0.6%		
Dance	23	0.3%		
Discovery Informatics	27	0.4%		
Early Childhood Education	182	2.5%	28	5.1%
Economics	80	1.1%		
Elementary Education	134	1.8%	28	5.1%
English	265	3.6%	30	5.5%
Environmental Studies			84	15.4%
Exercise Science	159	2.2%		
French	50	0.7%		
Geology	92	1.3%		
German	28	0.4%		
Historic Preservation and Community Planning	115	1.6%		
History	190	2.6%	30	5.5%
Hospitality and Tourism Management	98	1.3%		
International Business	85	1.2%		
International Studies	189	2.6%		
Jewish Studies	5	0.1%		
Languages			22	4.0%
Latin American and Caribbean Studies	11	0.2%		
Marine Biology	193	2.7%	48	8.8%
Mathematics	102	1.4%	12	2.2%
Middle Level Education	76	1.0%	9	1.6%
Music	75	1.0%		
Performing Arts			8	1.5%
Philosophy	44	0.6%		
Physical Education	113	1.6%		
Physics	52	0.7%		
Political Science	331	4.5%		
Psychology	601	8.3%		
Public Administration			64	11.7%
Public Health	93	1.3%		
Religious Studies	41	0.6%		
Science and Math for Teachers			18	3.3%
Secondary Education	99	1.4%		
Sociology	160	2.2%		
Spanish	126	1.7%		
Special Education	99	1.4%	19	3.5%
Studio Art	172	2.4%		
Teaching, Learning and Advocacy			47	8.6%
Theatre	123	1.7%		
Urban Studies	22	0.3%		
Women's and Gender Studies	32	0.4%		
Total Declared Majors*	<u>7,275</u>	<u>100.0%</u>	<u>546</u>	<u>100.0%</u>
Number of Students with Declared Majors	6,561	62.5%	529	43.5%
Number of Undeclared Majors	3,645	34.7%	0	0.0%
Non-Degree Seeking	300	2.9%	688	56.5%
Total, All Students	<u>10,506</u>	<u>100.0%</u>	<u>1,217</u>	<u>100.0%</u>

\*Data from CHEMIS files, excludes students exclusively auditing.  
Students with multiple majors are counted under each major.

**Number of Students per Class by Discipline: Undergraduate  
Fall 2008 - Fall 2012**

	<u>Fall 2008</u>	<u>Fall 2009</u>	<u>Fall 2010</u>	<u>Fall 2011</u>	<u>Fall 2012</u>
School of the Arts	20.6	23.8	21.7	22.9	21.2
Art History	29.7	29.4	28.3	27.8	25.7
Art History	30.7	33.3	29.2	29.6	30.0
Hist. Preserv. & Comm. Plann.	27.4	21.2	25.7	23.5	18.4
Arts Management	21.9	25.8	21.2	25.3	25.8
Music	19.4	30.0	22.9	29.1	23.0
Studio Art	15.3	15.7	15.9	16.0	15.8
Theatre and Dance	20.9	22.1	21.0	20.7	19.8
Dance					12.4
Theatre	20.9	22.1	21.0	20.7	20.7
School of Business	30.5	30.8	31.2	30.5	31.6
Accounting and Legal Studies	34.3	36.4	34.2	33.8	33.5
Accounting	33.4	34.3	32.4	33.6	32.9
Business Law	37.0	44.9	40.5	34.5	35.1
Economics and Finance	36.1	37.2	35.7	33.1	33.7
Economics	42.8	47.0	40.4	39.3	41.0
Finance	30.8	29.0	30.5	26.1	26.3
Real Estate	25.6	22.4	27.8	25.6	19.5
Hospitality and Tourism Mgmt	25.1	25.2	28.2	27.8	28.6
Management and Entrepreneurship	21.3	21.5	26.6	25.4	27.5
Entrepreneurship	19.0	23.0	25.2	16.7	23.8
Management	21.6	21.4	26.8	27.9	28.4
Marketing and Supply Chain Mgmt	32.8	31.1	28.8	29.5	31.6
Decision Science	32.8	31.1	31.5	34.6	34.0
Intermodal Transportation	15.0	14.8	15.5	20.5	14.0
International Business			19.3	15.4	19.8
Marketing and Supply Chain Mgmt	35.0	31.7	30.1	30.4	33.3
School of Education, Health, and Human Performanc	19.9	19.9	23.0	22.8	21.8
Health and Human Performance	23.7	23.7	24.8	24.6	23.8
Athletic Training	15.3	11.5	15.0	14.6	15.4
Exercise Science					24.7
Health	28.6	29.1	33.3	30.0	26.2
Physical Education	23.7	24.3	24.3	25.0	24.8
Teacher Education	15.9	16.3	20.8	20.3	18.9
Elementary/Early Childhood Education	15.2	15.5	19.6	21.1	18.9
Foundation/Sec/SPED	16.6	17.1	22.0	20.0	19.0
Middle Grades				4.0	24.0
Teacher Education				13.5	14.0
School of Humanities & Social Sciences	26.5	29.4	30.2	28.9	28.6
Communication	24.7	24.0	28.6	24.9	22.6
Crime/Law & Society	22.5	29.0	30.0	23.0	16.5
English	18.7	22.7	21.9	21.2	21.5
History	31.0	31.0	31.7	32.0	32.6
Philosophy	37.6	38.0	38.7	35.5	37.4
Political Science	29.2	28.5	27.1	27.8	29.8
Geography		34.0	20.0	20.0	20.0
Political Science	29.2	28.5	27.2	27.9	30.1
Psychology	29.9	37.6	36.1	32.1	31.8
Religious Studies	32.0	32.7	32.9	32.0	34.1
Sociology and Anthropology	28.3	31.8	35.0	35.9	33.8
Anthropology	29.9	31.8	37.2	38.2	39.0
Sociology	27.3	31.8	33.3	34.3	30.6
Urban Studies	31.5	35.5	20.8	25.0	30.3
Women's and Gender Studies	29.0	31.3	29.5	34.7	29.3

**Number of Students per Class by Discipline: Undergraduate  
Fall 2008 - Fall 2012**

	<u>Fall 2008</u>	<u>Fall 2009</u>	<u>Fall 2010</u>	<u>Fall 2011</u>	<u>Fall 2012</u>
School of Languages, Cultures, and World Affairs	21.1	22.1	20.9	20.1	20.1
African American Studies	27.0	26.0	26.3	27.8	29.2
African Studies			5.0	32.0	
Classics	22.3	22.7	20.4	22.2	26.0
Classics	40.3	39.2	34.2	38.3	49.2
Greek	13.3	12.7	12.5	9.5	11.5
Latin	18.6	17.5	16.5	17.1	18.5
French, Franco, and Italian Studies	21.6	24.2	22.0	19.6	18.3
French	22.4	24.1	21.1	18.6	17.0
Italian	19.6	25.7	24.7	22.9	22.8
Italian Lit in Translation	8.0	18.0	25.0	24.0	25.0
German and Slavic Studies	16.2	17.5	17.7	16.9	18.1
German	18.3	19.1	18.3	19.9	19.3
German Lit in Translation	20.0	34.0	48.0	31.0	30.0
Russian	8.4	10.7	10.1	8.8	11.4
Russian Lit in Translation	38.0	24.0	31.0	25.0	29.5
Hispanic Studies	22.2	22.1	21.3	21.0	20.7
Linguistics	29.0	32.0	28.0	22.7	30.0
Portuguese	10.7	11.3	11.8	13.5	13.8
Portuguese Lit in Translation	34.0	32.0	32.0	24.0	11.0
Spanish	22.3	22.2	21.5	21.2	21.0
International and Intercultural Studies	17.4	17.2	15.5	12.4	12.8
Arabic	21.2	19.0	16.0	13.7	12.5
Arabic Lit in Translation	40.0	23.0	28.0	27.0	15.0
Asian Studies	30.0	28.0	29.0	15.0	30.0
Chinese	18.0	17.2	12.8	11.2	13.7
Chinese Lit in Translation		12.0	21.0	9.0	9.0
Hebrew	16.3	17.0	14.3	9.8	10.0
Hindi	14.0	7.0	11.0	4.7	5.0
Japanese	11.3	18.5	13.4	12.6	13.0
Japanese Lit in translation			22.0	23.0	17.0
Languages		2.0	7.5	17.0	
International Studies		33.7	34.3	29.1	28.4
Jewish Studies	18.9	25.8	31.8	26.9	25.0
Latin American & Caribbean Studies	23.0	29.2	29.0	27.0	32.0
School of Science & Mathematics	27.2	28.5	28.4	28.4	28.7
Biology	27.8	28.1	29.1	29.1	28.2
Chemistry	25.0	27.1	25.0	24.1	25.0
Computer Science	18.7	21.9	21.4	22.4	21.8
Computer Science	18.7	21.9	21.4	22.3	21.6
Computing in the Arts				24.4	26.0
Discovery Informatics	20.0	23.0	26.0	22.0	24.5
Geology	28.2	29.0	30.2	29.9	28.1
Math	30.7	33.1	33.1	33.7	36.4
Physics & Astronomy	25.4	25.8	26.1	25.8	27.3
Astronomy	27.5	29.6	29.5	29.8	29.4
Physics	24.2	23.5	24.3	23.6	26.1
Interdisciplinary Areas	20.7	21.0	20.8	22.8	21.4
American Studies				40.0	
Environmental Studies		29.0	31.0	30.0	21.2
Honors	21.3	21.8	22.0	23.4	23.5
New Student Programs	19.2	19.5	18.6	21.6	19.1
First-Year Seminar	19.2	19.2	17.8	22.2	19.6
Learning Strategies	19.3	20.1	20.3	18.6	17.1
Libraries	21.3	23.0	26.5	14.7	28.5
COLLEGE TOTALS	24.9	26.4	26.4	26.3	26.1

Note: Excludes independent studies, tutorials, practicums, thesis research, applied music, bachelor's essays, language conversation, and courses taught at other institutions are excluded.

*Academics*

**Number of Students per Class by Discipline: Graduate  
Fall 2008 - Fall 2012**

	<u>Fall 2008</u>	<u>Fall 2009</u>	<u>Fall 2010</u>	<u>Fall 2011</u>	<u>Fall 2012</u>
School of the Arts	7.0	7.6	7.0	9.8	7.0
Historic Preservation	8.5	9.3	7.3	11.3	13.0
Music Education	4.0	5.0	6.0	7.5	4.0
School of Business and Economics	21.6	20.3	19.4	23.0	22.5
Accounting and Legal Studies	21.6	20.3	17.6	20.0	19.6
Accounting	21.3	20.2	14.7	16.6	16.2
Business Law	24.0	21.0	20.0		
Master Business Administration			25.0	32.0	30.0
Economics and Finance			25.0	32.0	30.0
Master Business Administration			25.0	32.0	30.0
Management and Entrepreneurship			25.0	32.0	30.0
Master Business Administration			25.0	32.0	30.0
School of Education, Health, and Human Performance	13.5	13.9	14.4	12.7	14.2
Education - Professional Development	15.8	15.7	13.8	11.9	16.5
Teacher Education	10.0	11.4	15.4	13.8	11.3
Education: Foundations/Sec/SPED	9.8	11.1	13.9	13.4	10.5
Elementary/Early Childhood Education	10.2	12.3	16.9	15.2	14.3
Education: Teaching/Learn/Advoc		5.5		14.0	16.5
Middle Grades				1.0	1.1
School of Humanities & Social Sciences	14.8	12.8	15.3	14.2	13.8
Communication	15.0	15.5	16.5	10.5	11.5
English	17.8	17.3	18.3	18.7	14.7
History	20.5	10.0	13.7	10.0	12.8
Public Administration	12.4	11.4	14.5	15.4	14.9
School of Languages, Cultures, and World Affairs	7.7	10.0	8.5	14.0	9.5
French	6.0	24.0			
Hispanic Studies	6.8	8.0	10.0	13.0	4.0
Bilingual Interpreting	6.3	6.9			
Spanish	9.0	12.0	10.0	13.0	4.0
Languages	14.0	14.0	7.0	15.0	15.0
School of Science and Mathematics	9.2	10.1	9.0	8.9	8.6
Biology	8.2	9.3	10.1	7.9	8.8
Computer and Information Sciences	12.0	17.0	10.4	6.8	8.6
Mathematics	10.0	9.0	5.7	15.4	8.0
Interdisciplinary Areas	13.1	12.2	10.9	11.0	10.6
Environmental Studies	13.1	12.6	10.6	11.7	11.3
Sci/Math for Teachers	13.0	8.0	14.0	7.3	7.0
<b>COLLEGE TOTALS</b>	<b>13.1</b>	<b>13.3</b>	<b>13.8</b>	<b>13.1</b>	<b>13.6</b>

Notes:

Each section of a course or lab is counted separately.

Independent studies, tutorials, practicums, thesis research, applied music, bachelor's essays, and courses taught at other institutions are not included. Joint program courses are also excluded.

Cross-listed courses are distributed to count as one course.

**Total Student Enrollment  
Undergraduate Level Courses  
Fall 2008 - Fall 2012**

	Fall 2008	Fall 2009	Fall 2010	Fall 2011	Fall 2012	5 Yr. Chg (%)
<b>School of the Arts</b>						
Art History	980	1,160	1,133	1,146	1,064	9%
Art History	681	894	871	854	784	15%
Hist. Preserv. & Comm. Plann.	299	266	262	292	280	-6%
Art Management	267	271	316	341	416	56%
Music	1,335	1,486	1,518	1,471	1,500	12%
Studio Art	731	766	780	798	826	13%
Theatre and Dance	1,490	1,550	1,594	1,567	1,517	2%
Dance					99	N/A
Theatre	1,490	1,550	1,594	1,567	1,418	-5%
Subtotal	4,803	5,233	5,341	5,323	5,323	11%
<b>School of Business</b>						
Accounting and Legal Studies	1,134	1,277	1,209	1,183	1,306	15%
Accounting	838	963	885	907	955	14%
Business Law	296	314	324	276	351	19%
Economics and Finance	1,529	1,501	1,664	1,733	1,695	11%
Economics	901	941	1,019	1,104	1,112	23%
Finance	496	442	530	496	503	1%
Real Estate	132	118	115	133	80	-32%
Hospitality and Tourism Mgmt	431	421	492	546	573	33%
Management and Entrepreneurship	842	891	837	799	848	1%
Entrepreneurship	95	92	126	117	143	51%
Management	747	799	711	682	705	-6%
Marketing and Supply Chain Mgmt	1,351	1,441	1,461	1,429	1,463	8%
Decision Science	685	771	693	696	750	9%
Intermodal Transportation	30	60	33	41	29	-3%
International Business			120	109	79	N/A
Marketing and Supply Chain Mgmt	636	610	615	583	605	-5%
Subtotal	5,287	5,531	5,663	5,690	5,885	11%
<b>School of Education, Health, and Human Performance</b>						
Health and Human Performance	2,153	2,130	2,240	2,418	2,518	17%
Athletic Training	168	127	195	205	216	29%
Exercise Science					393	N/A
Health	548	525	632	632	556	1%
Physical Education	1,437	1,478	1,413	1,581	1,353	-6%
Teacher Education	1,348	1,580	1,586	1,566	1,469	9%
Elementary/Early Childhood Education	700	791	774	804	756	8%
Foundation/Sec/SPED	648	789	812	733	673	4%
Middle Grades				2	12	N/A
Teacher Education				27	28	N/A
Subtotal	3,501	3,710	3,826	3,984	3,987	14%
<b>School of Humanities &amp; Social Sciences</b>						
Communication	2,243	2,383	2,212	2,523	2,207	-2%
Comparative Literature		2			1	N/A
Crime/Law & Society	52	34	40	36	33	-37%
English	2,674	1,877	1,875	1,986	2,011	-25%
History	2,578	2,618	2,769	2,604	2,597	1%
Philosophy	798	804	816	785	747	-6%
Political Science	1,424	1,507	1,532	1,404	1,553	9%
Geography		10	10	10	30	N/A
Political Science	1,424	1,497	1,522	1,394	1,523	7%
Psychology	2,499	2,574	2,594	2,562	2,542	2%
Religious Studies	666	688	643	737	665	0%
Sociology and Anthropology	2,057	1,968	1,857	2,158	2,149	4%
Anthropology	848	811	851	953	948	12%
Sociology	1,209	1,157	1,006	1,205	1,201	-1%
Urban Studies	63	73	91	105	96	52%
Women's and Gender Studies	238	262	337	358	334	40%
Subtotal	15,292	14,790	14,766	15,258	14,935	-2%

**Total Student Enrollment  
Undergraduate Level Courses  
Fall 2008 - Fall 2012**

	Fall 2008	Fall 2009	Fall 2010	Fall 2011	Fall 2012	5 Yr. Chg (%)
<b>School of Languages, Cultures, and World Affairs</b>						
African American Studies	55	79	79	154	73	33%
African Studies			5	32		N/A
Classics	462	507	471	511	547	18%
Classics	186	242	206	268	297	60%
Greek	53	38	50	38	46	-13%
Latin	223	227	215	205	204	-9%
French, Franco, and Italian Studies	1,146	1,353	1,235	1,238	1,140	-1%
French	942	1,034	889	915	819	-13%
Italian	196	283	321	275	296	51%
Italian Lit in Translation	8	36	25	48	25	213%
German and Slavic Studies	391	420	442	477	511	31%
German	275	287	292	340	329	20%
German Lit in Translation	19	34	48	31	30	58%
Russian	59	75	71	81	93	58%
Russian Lit in Translation	38	24	31	25	59	55%
Hispanic Studies	2,999	3,075	2,987	2,991	3,011	0%
Linguistics	29	32	28	34	30	3%
Portuguese	32	45	47	54	69	116%
Portuguese Lit in Translation	34	32	32	24	11	-68%
Spanish	2,904	2,966	2,880	2,879	2,901	0%
International and Intercultural Studies	420	395	466	398	362	-14%
Arabic	106	95	96	82	76	-28%
Arabic Lit in Translation	40	23	28	27	15	-63%
Asian Studies	30	28	58	32	31	3%
Chinese	73	86	64	67	83	14%
Chinese Lit in Translation		12	21	9	9	N/A
Hebrew	65	68	57	39	30	-54%
Hindi	14	7	11	14	10	43%
Japanese	91	74	94	88	91	0%
Japanese Lit in Translation			22	23	17	N/A
Languages	1	2	15	17		N/A
International Studies		101	103	220	275	N/A
Jewish Studies	57	135	145	121	126	121%
Latin American & Caribbean Studies	71	147	145	108	97	37%
<b>Subtotal</b>	<b>5,601</b>	<b>6,212</b>	<b>6,078</b>	<b>6,250</b>	<b>6,142</b>	<b>10%</b>
<b>School of Science &amp; Mathematics</b>						
Biology	4,908	5,004	4,834	5,226	5,093	4%
Chemistry	1,980	2,173	2,256	2,250	2,149	9%
Computer Science	528	663	737	826	926	75%
Computer Science	528	663	737	765	874	66%
Computing in the Arts				61	52	N/A
Discovery Informatics	20	23	26	23	51	155%
Geology	1,672	1,617	1,621	1,738	1,759	5%
Math	3,487	3,651	3,442	3,623	3,947	13%
Physics & Astronomy	1,528	1,545	1,605	1,705	1,712	12%
Astronomy	604	652	648	690	636	5%
Physics	924	893	957	1,015	1,076	16%
<b>Subtotal</b>	<b>14,123</b>	<b>14,676</b>	<b>14,521</b>	<b>15,391</b>	<b>15,637</b>	<b>11%</b>
<b>Interdisciplinary Areas</b>						
American Studies				40		N/A
Environmental Studies		37	33	41	60	N/A
Honors	1,073	1,085	1,026	1,178	1,231	15%
New Student Programs	404	565	501	907	918	127%
First-Year Seminar	269	384	339	777	764	99%
Learning Strategies	135	181	162	130	154	14%
<b>Subtotal</b>	<b>1,477</b>	<b>1,687</b>	<b>1,560</b>	<b>2,166</b>	<b>2,209</b>	<b>50%</b>
<b>Libraries</b>						
Library	64	46	53	44	57	-11%
<b>COLLEGE TOTALS</b>	<b>50,148</b>	<b>51,885</b>	<b>51,808</b>	<b>54,106</b>	<b>54,175</b>	<b>8%</b>

Note:

Enrollments in each section of a course or lab are counted separately. Independent studies, tutorials, practicums, thesis research, applied music, and bachelor's essays are included. However, language conversation, and courses taught at other institutions are excluded.



**Total Student Enrollment  
Graduate Level Courses  
Fall 2008 - Fall 2012**

	Fall 2008	Fall 2009	Fall 2010	Fall 2011	Fall 2012	5 Yr. Chg (%)
<b>School of the Arts</b>						
Historic Preservation	17	28	29	34	13	-24%
Music Education	4	12	9	18	11	175%
<b>Subtotal</b>	<b>21</b>	<b>40</b>	<b>38</b>	<b>52</b>	<b>24</b>	<b>14%</b>
<b>School of Business and Economics</b>						
Accounting and Legal Studies	195	127	162	180	157	-19%
Accounting	171	106	92	116	97	-43%
Business Law	24	21	20			N/A
Master Business Administration	-	-	50	64	60	N/A
Economics and Finance	-	-	25	32	30	N/A
Finance	-	-	-	-	-	N/A
Master Business Administration	-	-	25	32	30	N/A
Management and Entrepreneurship	-	-	50	64	60	N/A
Master Business Administration	-	-	50	64	60	N/A
<b>Subtotal</b>	<b>195</b>	<b>127</b>	<b>237</b>	<b>276</b>	<b>247</b>	<b>27%</b>
<b>School of Education, Health, and Human Performance</b>						
Education - Professional Development	962	990	798	546	626	-35%
Teacher Education	407	523	543	496	407	0%
Education: Foundations/Sec/SPED	243	235	250	218	166	-32%
Elementary/Early Childhood Education	164	277	293	221	204	24%
Education: Teaching/Learn/Advoc	-	11		56	33	N/A
Middle Grades				1	4	N/A
<b>Subtotal</b>	<b>1,369</b>	<b>1,513</b>	<b>1,341</b>	<b>1,042</b>	<b>1,033</b>	<b>-25%</b>
<b>School of Humanities and Social Sciences</b>						
Communication	66	77	79	47	50	-24%
English	89	64	62	64	52	-42%
History	53	43	58	58	60	13%
Public Administration	138	145	166	185	159	15%
<b>Subtotal</b>	<b>346</b>	<b>329</b>	<b>365</b>	<b>354</b>	<b>321</b>	<b>-7%</b>
<b>School of Languages, Cultures, and World Affairs</b>						
French	6	5				N/A
Hispanic Studies	35	40	13	13	4	-89%
Bilingual Interpreting	26	28	3			N/A
Spanish	9	12	10	13	4	-56%
Languages	14	8	7	15	15	7%
Latin	-	-	-	-	-	N/A
<b>Subtotal</b>	<b>55</b>	<b>53</b>	<b>20</b>	<b>28</b>	<b>19</b>	<b>-65%</b>
<b>School of Science and Mathematics</b>						
Biology	143	128	132	137	137	-4%
Computer and Information Sciences	50	34	52	28	45	-10%
Mathematics	56	39	35	59	41	-27%
<b>Subtotal</b>	<b>249</b>	<b>201</b>	<b>219</b>	<b>224</b>	<b>223</b>	<b>-10%</b>
<b>Interdisciplinary Areas</b>						
Environmental Studies	219	248	219	207	221	1%
Sci/Math for Teachers	27	19	32	29	27	0%
<b>Subtotal</b>	<b>246</b>	<b>267</b>	<b>251</b>	<b>236</b>	<b>248</b>	<b>1%</b>
<b>College Totals</b>	<b>2,481</b>	<b>2,530</b>	<b>2,471</b>	<b>2,212</b>	<b>2,115</b>	<b>-15%</b>

Notes:

Enrollments in each section of a course or lab are counted separately.  
Independent Studies, tutorials, practicums and thesis research are included.

Mean Cumulative GPA by Class, Gender, and Major  
Fall 2008 - Fall 2012

	<u>Fall 2008</u>	<u>Fall 2009</u>	<u>Fall 2010</u>	<u>Fall 2011</u>	<u>Fall 2012</u>
<b><u>Class</u></b>					
Freshman	2.90	2.95	2.90	2.87	2.95
Sophomore	2.89	2.88	2.89	2.92	2.96
Junior	2.96	2.95	2.95	2.95	2.96
Senior	3.02	3.05	3.06	3.06	3.06
Graduate	3.71	3.74	3.71	3.75	3.77
<b><u>Gender</u></b>					
Undergraduate (degree-seeking)	2.94	2.96	2.96	2.95	2.98
Male	2.81	2.82	2.81	2.81	2.83
Female	3.02	3.04	3.04	3.03	3.08
Graduate (degree-seeking)	3.71	3.74	3.71	3.75	3.77
Male	3.65	3.64	3.63	3.69	3.76
Female	3.73	3.78	3.74	3.77	3.78
<b><u>Undergraduate Majors</u></b>					
Accounting	3.04	3.11	3.19	3.13	3.12
Anthropology	3.02	3.10	3.15	3.08	3.09
Art History	3.13	3.19	3.12	3.17	3.12
Arts Management	3.09	3.10	3.03	2.99	2.97
Astronomy			2.21	2.40	2.45
Astrophysics	3.13	2.91	2.77	2.94	3.02
Athletic Training	3.06	3.19	3.22	3.16	2.92
Biochemistry	3.24	3.19	3.28	3.26	3.22
Biology	3.01	3.05	3.04	3.06	3.09
Business Administration	2.92	3.01	2.97	3.02	3.04
Chemistry	2.94	3.02	2.99	2.98	2.86
Classics	3.21	3.27	3.14	3.06	3.09
Communication	2.86	2.87	2.89	2.87	2.90
Computer Science	2.91	2.88	2.83	2.85	2.88
Computing in the Arts				3.03	2.96
Dance					3.21
Discovery Informatics	3.10	3.34	3.28	3.25	3.22
Early Childhood Education	3.17	3.20	3.19	3.09	3.16
Economics	3.17	3.12	3.06	3.05	3.06
Elementary Education	3.17	3.17	3.12	3.10	3.23
English	3.02	3.06	3.06	3.05	3.07
Exercise Science					3.14
French & Francophone Studies	3.24	3.42	3.40	3.33	3.17
Geology	3.09	3.09	3.11	3.02	2.99
German	3.45	3.38	3.27	3.05	3.00
Historic Preservation	2.94	2.98	3.04	2.99	2.98
History	3.02	2.96	2.83	2.92	3.00
Hospitality/Tourism Mgmt	2.97	3.18	2.98	3.08	3.11
Information Systems	2.55	2.58	2.79	2.60	2.77
International Business	3.00	3.17	3.20	3.13	3.13
International Studies			3.17	3.08	3.16
Jewish Studies				2.92	2.82
Latin Amer/Carib Studies	3.10	2.99	3.27	3.18	3.21
Marine Biology	2.94	2.91	2.93	2.95	2.95

**Mean Cumulative GPA by Class, Gender, and Major  
Fall 2008 - Fall 2012**

	<u>Fall 2008</u>	<u>Fall 2009</u>	<u>Fall 2010</u>	<u>Fall 2011</u>	<u>Fall 2012</u>
Mathematics	3.15	3.09	3.14	3.12	3.17
Middle Level Education	3.03	3.18	3.13	3.13	3.14
Music	3.08	3.21	3.20	3.26	3.36
Philosophy	2.99	3.04	2.98	3.07	2.89
Physical Education	2.88	2.92	2.91	2.99	2.81
Physics	3.16	3.17	3.05	3.17	3.14
Political Science	3.01	3.08	3.05	3.00	2.93
Psychology	3.03	3.05	3.05	3.02	2.95
Public Health					3.09
Religious Studies	3.15	2.92	2.81	2.83	3.07
Secondary Education		3.07	2.99	3.05	3.10
Sociology	2.81	2.78	2.81	2.89	2.92
Spanish	3.19	3.30	3.20	3.15	3.15
Special Education	3.21	3.14	3.14	3.17	3.24
Studio Art	3.09	3.02	3.08	3.05	3.12
Theatre	3.03	3.03	2.97	2.99	2.93
Urban Studies	3.01	2.92	3.15	3.18	2.60
Women's and Gender Study			3.33	3.10	3.27
Undecided	2.86	2.85	2.85	2.84	2.89
<b><u>Graduate Majors</u></b>					
Accounting	3.63	3.72	3.76	3.77	3.77
Communication	3.64	3.69	3.56	3.74	3.68
Computer Science	3.59	3.71	3.71	3.69	3.74
Early Childhood Education	3.95	3.93	3.90	3.88	3.88
Elementary Education	3.91	3.94	3.96	3.94	3.95
English	3.68	3.66	3.54	3.72	3.63
Environmental Studies	3.81	3.79	3.73	3.78	3.79
History	3.55	3.64	3.69	3.52	3.79
Languages	3.74	3.73	3.80	3.70	3.62
Legal Interpreting	3.47	3.60	3.59		
Marine Biology	3.60	3.62	3.60	3.68	3.81
Master's in Business Administration			3.35	3.59	3.57
Mathematics	3.47	3.63	3.67	3.40	3.69
Middle Level Education				3.98	3.89
Performance Arts Education	3.49	3.43	3.45	3.80	3.79
Public Administration	3.76	3.73	3.73	3.71	3.69
Science/Math for Teachers	3.84	3.75	3.56	3.82	3.82
Special Education	3.75	3.63	3.80	3.86	3.93
Teaching, Learning and Advocacy			3.63	3.88	3.88

**Number of Undergraduate Courses (Sections) Taught  
Fall 2008 - Fall 2012**

	Fall 2008		Fall 2009		Fall 2010		Fall 2011		Fall 2012	
	Lower Div.	Upper Div.	Lower Div.	Upper Div.	Lower Div.	Upper Div.	Lower Div.	Upper Div.	Lower Div.	Upper Div.
<b>School of the Arts</b>										
Art History	21.0	11.0	26.0	13.0	28.0	11.0	28.0	12.5	27.0	14.0
Art History	13.0	9.0	19.0	7.5	22.0	7.5	20.5	8.0	19.5	6.5
Hist. Preserv. & Comm. Plann.	8.0	2.0	7.0	5.5	6.0	3.5	7.5	4.5	7.5	7.5
Arts Management	4.0	7.5	3.0	7.0	4.0	10.0	4.0	9.5	4.0	12.0
Music	34.0	27.0	28.0	15.0	34.0	25.0	28.0	16.0	34.0	25.0
Studio Art	26.0	21.0	27.0	21.0	26.0	22.0	29.0	19.5	30.0	21.0
Theatre and Dance	43.0	25.0	45.5	21.0	51.0	22.0	48.0	26.0	48.0	26.0
Dance									3.0	5.0
Theatre	43.0	25.0	45.5	21.0	51.0	22.0	48.0	26.0	45.0	21.0
Subtotal	128.0	91.5	129.5	77.0	143.0	90.0	137.0	83.5	143.0	98.0
<b>School of Business</b>										
Accounting and Legal Studies	23.0	10.0	25.0	10.0	26.0	9.0	25.0	10.0	28.0	11.0
Accounting	15.0	10.0	18.0	10.0	18.0	9.0	17.0	10.0	18.0	11.0
Business Law	8.0	0.0	7.0	0.0	8.0	0.0	8.0	0.0	10.0	0.0
Economics and Finance	15.0	27.0	15.0	25.0	18.0	28.0	19.0	33.0	19.0	31.0
Economics	13.0	8.0	13.0	7.0	16.0	9.0	17.0	11.0	17.0	10.0
Finance	2.0	14.0	2.0	13.0	2.0	15.0	2.0	17.0	2.0	17.0
Real Estate	0.0	5.0	0.0	5.0	0.0	4.0	0.0	5.0	0.0	4.0
Hospitality and Tourism Mgmt	5.0	12.0	5.0	11.0	4.0	12.0	5.0	14.5	4.0	16.0
Management and Entrepreneurship	4.0	35.0	8.0	33.0	3.0	28.0	3.0	28.0	2.0	28.5
Entrepreneurship	0.0	5.0	0.0	4.0	0.0	5.0	0.0	7.0	0.0	6.0
Management	4.0	30.0	8.0	29.0	3.0	23.0	3.0	21.0	2.0	22.5
Marketing and Supply Chain Mgmt	8.0	33.0	8.0	38.0	8.0	42.0	7.0	41.0	9.0	37.0
Decision Science	8.0	13.0	8.0	15.0	8.0	14.0	7.0	13.0	9.0	13.0
Intermodal Transportation	0.0	2.0	0.0	4.0	0.0	2.0	0.0	2.0	0.0	2.0
International Business					0.0	6.0	0.0	7.0	0.0	4.0
Marketing and Supply Chain Mgmt	0.0	18.0	0.0	19.0	0.0	20.0	0.0	19.0	0.0	18.0
Subtotal	55.0	117.0	61.0	117.0	59.0	119.0	59.0	126.5	62.0	123.5
<b>School of Education, Health, and Human Performance</b>										
Health and Human Performance	61.5	30.0	59.5	31.0	58.0	32.0	66.0	32.0	67.0	37.5
Athletic Training	2.0	9.0	2.0	9.0	3.0	10.0	4.0	10.0	4.0	10.0
Exercise Science									3.0	12.0
Health	15.0	4.0	14.0	4.0	14.0	5.0	18.0	3.0	14.0	7.0
Physical Education	44.5	17.0	43.5	18.0	41.0	17.0	44.0	19.0	46.0	8.5
Teacher Education	6.0	79.0	13.0	84.0	9.0	65.0	12.0	59.0	11.5	63.0
Elementary/Early Childhood Edu	0.0	46.0	0.0	51.0	0.0	38.0	0.0	37.0	0.0	37.5
Foundation/Sec/SPED	6.0	33.0	13.0	33.0	9.0	27.0	10.0	21.5	9.5	25.0
Middle Grades							0.0	0.5	0.0	0.5
Teacher Education							2.0	0.0	2.0	0.0
Subtotal	67.5	109.0	72.5	115.0	67.0	97.0	78.0	91.0	78.5	100.5
<b>School of Humanities &amp; Social Sciences</b>										
Communication	52.0	36.5	53.0	43.5	45.0	30.5	61.0	39.0	55.0	41.0
Crime/Law & Society	1.0	1.0	0.0	1.0	0.0	1.0	0.0	1.0	0.0	2.0
English	122.5	19.0	63.0	18.5	64.0	20.0	73.0	20.0	73.0	20.0
History	64.0	18.5	66.0	18.0	67.0	20.0	62.0	19.0	59.0	20.5
Philosophy	19.0	2.0	18.0	3.0	19.0	2.0	19.0	3.0	18.0	2.0
Political Science	26.0	22.5	27.0	25.0	28.0	27.0	28.0	21.5	34.0	17.0
Geography			0.5	0.0	0.5	0.0	0.5	0.0	1.5	0.0
Political Science	26.0	22.5	26.5	25.0	27.5	27.0	27.5	21.5	32.5	17.0
Psychology	41.0	41.5	34.0	33.5	34.0	36.5	39.0	39.5	55.0	24.0
Religious Studies	18.5	2.0	19.0	2.0	17.5	2.0	20.5	2.5	17.5	2.0
Sociology and Anthropology	52.0	20.0	45.0	16.0	40.0	12.5	46.0	13.5	44.5	18.0
Anthropology	20.0	8.0	18.0	7.0	18.0	4.5	19.0	5.5	18.0	6.0
Sociology	32.0	12.0	27.0	9.0	22.0	8.0	27.0	8.0	26.5	12.0
Urban Studies	1.0	1.0	1.0	1.0	1.0	3.0	1.0	3.0	1.0	2.0
Women's and Gender Studies	8.0	0.0	8.0	0.0	9.0	2.0	9.0	1.0	9.5	1.5
Subtotal	405.0	164.0	334.0	161.5	324.5	156.5	358.5	163.0	366.5	150.0
<b>School of Languages, Cultures, and World Affairs</b>										
African American Studies	2.0	0.0	2.0	1.0	3.0	0.0	2.0	3.5	1.0	1.5
African Studies					1.0	0.0	1.0	0.0		
Classics	16.0	4.5	18.0	4.0	17.0	6.0	18.0	5.0	16.0	5.0
Classics	3.0	1.5	5.0	1.0	4.0	2.0	5.0	2.0	4.0	2.0
Greek	3.0	1.0	2.0	1.0	3.0	1.0	3.0	1.0	3.0	1.0
Latin	10.0	2.0	11.0	2.0	10.0	3.0	10.0	2.0	9.0	2.0

**Number of Undergraduate Courses (Sections) Taught  
Fall 2008 - Fall 2012**

	Fall 2008		Fall 2009		Fall 2010		Fall 2011		Fall 2012	
	Lower Div.	Upper Div.	Lower Div.	Upper Div.	Lower Div.	Upper Div.	Lower Div.	Upper Div.	Lower Div.	Upper Div.
French, Franco, and Italian Studies	39.0	14.0	45.0	10.5	46.0	10.0	42.0	21.0	40.0	22.0
French	31.0	11.0	33.0	9.5	33.0	9.0	31.0	18.0	29.0	19.0
Italian	8.0	2.0	10.0	1.0	12.0	1.0	11.0	1.0	11.0	2.0
Italian Lit in Translation	0.0	1.0	2.0	0.0	1.0	0.0	0.0	2.0	0.0	1.0
German and Slavic Studies	16.5	7.0	17.0	7.0	18.0	7.0	20.0	8.0	19.0	9.0
German	10.0	5.0	10.0	5.0	11.0	5.0	12.0	5.0	11.0	6.0
German Lit in Translation	0.5	0.0	1.0	0.0	1.0	0.0	1.0	0.0	1.0	0.0
Russian	5.0	2.0	5.0	2.0	5.0	2.0	6.0	3.0	5.0	3.0
Russain Lit in Translation	1.0	0.0	1.0	0.0	1.0	0.0	1.0	0.0	2.0	0.0
Hispanic Studies	99.0	36.0	105.0	34.0	103.0	37.0	105.5	37.0	109.0	36.0
Linguistics	1.0	0.0	1.0	0.0	1.0	0.0	1.5	0.0	1.0	0.0
Portuguese	3.0	0.0	4.0	0.0	4.0	0.0	4.0	0.0	5.0	0.0
Portuguese Lit in Translation	1.0	0.0	1.0	0.0	1.0	0.0	1.0	0.0	1.0	0.0
Spanish	94.0	36.0	99.0	34.0	97.0	37.0	99.0	37.0	102.0	36.0
International and Intercultural Studies	20.0	4.0	20.0	3.0	24.0	6.0	27.0	5.0	23.0	5.0
Arabic	5.0	0.0	5.0	0.0	5.0	1.0	5.0	1.0	5.0	1.0
Arabic Lit in Translation	1.0	0.0	1.0	0.0	1.0	0.0	1.0	0.0	1.0	0.0
Asian Studies	1.0	0.0	1.0	0.0	2.0	0.0	2.0	0.0	1.0	0.0
Chinese	3.0	1.0	4.0	1.0	4.0	1.0	5.0	1.0	5.0	1.0
Chinese Lit in Translation			1.0	0.0	1.0	0.0	1.0	0.0	1.0	0.0
Hebrew	3.0	1.0	3.0	1.0	3.0	1.0	3.0	1.0	2.0	1.0
Hindi	1.0	0.0	1.0	0.0	1.0	0.0	3.0	0.0	2.0	0.0
Japanese	6.0	2.0	3.0	1.0	4.0	3.0	5.0	2.0	5.0	2.0
Japanese Lit in Translation					1.0	0.0	1.0	0.0	1.0	0.0
Languages			1.0	0.0	2.0	0.0	1.0	0.0		
International Studies	0.0	0.0	3.0	0.0	3.0	0.0	6.0	1.5	8.5	1.0
Jewish Studies	1.5	2.0	3.0	2.0	2.5	2.0	2.0	2.5	2.5	2.5
Latin American & Caribbean Studies	3.0	0.0	5.0	0.0	5.0	0.0	4.0	0.0	3.0	0.0
Subtotal	197.0	67.5	218.0	61.5	222.5	68.0	227.5	83.5	222.0	82.0
School of Science & Mathematics										
Biology	121.0	53.7	123.0	52.7	114.0	51.0	120.0	58.0	120.5	58.0
Chemistry	61.0	17.0	62.0	17.0	71.0	18.0	72.0	20.0	67.0	18.0
Computer Science	22.0	6.0	23.0	7.0	26.0	8.0	29.0	7.0	33.0	9.0
Computer Science	22.0	6.0	23.0	7.0	26.0	8.0	26.5	7.0	31.0	9.0
Computing in the Arts							2.5	0.0	2.0	0.0
Discovery Informatics	1.0	0.0	1.0	0.0	1.0	0.0	1.0	0.0	2.0	0.0
Geology	52.0	7.0	48.0	7.0	46.5	7.0	51.7	6.0	54.5	7.7
Math	107.0	6.5	103.0	7.0	94.0	10.0	98.0	9.5	100.0	8.5
Physics & Astronomy	54.0	6.0	53.5	6.0	53.0	8.0	55.9	9.5	53.0	9.4
Astronomy	21.0	1.0	21.0	1.0	21.0	1.0	21.7	1.5	20.5	1.2
Physics	33.0	5.0	32.5	5.0	32.0	7.0	34.2	8.0	32.5	8.2
Subtotal	418.0	96.2	413.5	96.7	405.5	102.0	427.6	110.0	430.0	110.6
Interdisciplinary Areas										
American Studies							1.0	0.0		
Environmental Studies			1.0	0.0	1.0	0.0	1.0	0.0	2.0	0.5
Honors	34.0	15.0	35.0	14.0	34.0	12.0	43.0	6.0	45.0	6.0
New Student Programs	21.0	0.0	29.0	0.0	27.0	0.0	42.0	0.0	48.0	0.0
First-Year Seminar	14.0	0.0	20.0	0.0	19.0	0.0	35.0	0.0	39.0	0.0
Learning Strategies	7.0	0.0	9.0	0.0	8.0	0.0	7.0	0.0	9.0	0.0
Subtotal	55.0	15.0	65.0	14.0	62.0	12.0	87.0	6.0	95.0	6.5
Libraries										
Library	3.0	0.0	2.0	0.0	2.0	0.0	3.0	0.0	2.0	0.0
<b>COLLEGE TOTALS</b>	<b>1328.5</b>	<b>660.2</b>	<b>1295.5</b>	<b>642.7</b>	<b>1285.5</b>	<b>644.5</b>	<b>1377.6</b>	<b>663.5</b>	<b>1399.0</b>	<b>671.1</b>

Notes:

Each section of a course or lab is counted separately.

Independent studies, tutorials, practicums, thesis research, applied music, bachelor's essays, language conversation, and courses taught at other institutions are not included.

Cross-listed courses are distributed to count as one course.

*Academics*

**Number of Graduate Courses (Sections) Taught  
Fall 2008 - Fall 2012**

	<u>Fall 2008</u>	<u>Fall 2009</u>	<u>Fall 2010</u>	<u>Fall 2011</u>	<u>Fall 2012</u>
<b>School of the Arts</b>					
Historic Preservation	2.0	3.0	4.0	3.0	1.0
Music Education	1.0	2.0	1.0	2.0	2.0
<b>Subtotal</b>	<b>3.0</b>	<b>5.0</b>	<b>5.0</b>	<b>5.0</b>	<b>3.0</b>
<b>School of Business and Economics</b>					
Accounting and Legal Studies	9.0	6.0	9.0	9.0	8.0
Accounting	8.0	5.0	6.0	7.0	6.0
Business Law	1.0	1.0	1.0		
Master Business Administration			2.0	2.0	2.0
Economics and Finance			1.0	1.0	1.0
Master Business Administration			1.0	1.0	1.0
Management and Entrepreneurship			2.0	2.0	2.0
Master Business Administration			2.0	2.0	2.0
<b>Subtotal</b>	<b>9.0</b>	<b>6.0</b>	<b>12.0</b>	<b>12.0</b>	<b>11.0</b>
<b>School of Education, Health, and Human Performance</b>					
Education - Professional Development	61.0	63.0	58.0	46.0	38.0
Teacher Education	40.0	44.0	33.0	33.0	30.5
Education: Foundations/Sec/SPED	24.0	20.0	17.0	14.5	13.5
Elementary/Early Childhood Educati	16.0	22.0	16.0	13.5	11.5
Education: Teaching/Learn/Advoc		2.0		4.0	2.0
Middle Grades				1.0	3.5
<b>Subtotal</b>	<b>101.0</b>	<b>107.0</b>	<b>91.0</b>	<b>79.0</b>	<b>68.5</b>
<b>School of Humanities &amp; Social Sciences</b>					
Communication	4.0	4.0	4.0	4.0	4.0
English	4.0	3.0	3.0	3.0	3.0
History	2.0	3.0	3.0	3.0	4.0
Public Administration	10.0	11.5	11.0	11.5	10.5
<b>Subtotal</b>	<b>20.0</b>	<b>21.5</b>	<b>21.0</b>	<b>21.5</b>	<b>21.5</b>
<b>School of Languages, Cultures, and World Affairs</b>					
French	1.0	0.5			
Hispanic Studies	5.0	4.5	1.0	1.0	1.0
Bilingual Interpreting	4.0	3.5			
Spanish	1.0	1.0	1.0	1.0	1.0
Languages	1.0	0.5	1.0	1.0	1.0
Latin					
<b>Subtotal</b>	<b>7.0</b>	<b>5.5</b>	<b>2.0</b>	<b>2.0</b>	<b>2.0</b>
<b>School of Science and Mathematics</b>					
Biology	15.2	11.2	11.0	14.5	13.0
Computer and Information Sciences	4.0	2.0	5.0	4.0	5.0
Mathematics	5.5	4.0	6.0	3.5	4.5
<b>Subtotal</b>	<b>24.7</b>	<b>17.2</b>	<b>22.0</b>	<b>22.0</b>	<b>22.5</b>
<b>Interdisciplinary Areas</b>					
Environmental Studies	14.7	17.7	18.0	14.5	16.5
Sci/Math for Teachers	2.0	2.0	2.0	3.0	3.0
<b>Subtotal</b>	<b>16.7</b>	<b>19.7</b>	<b>20.0</b>	<b>17.5</b>	<b>19.5</b>
<b>College Totals</b>	<b>181.3</b>	<b>181.8</b>	<b>173.0</b>	<b>159.0</b>	<b>148.0</b>

Notes:

Each section of a course or lab is counted separately.

Independent studies, tutorials, practicums, thesis research, applied music, bachelor's essays, and courses taught at other institutions are not included. Joint program courses are also excluded.

Cross-listed courses are distributed to count as one course.

**Degrees Awarded by Major  
2007-08 to 2011-12**

	2007-08		2008-09		2009-10		2010-11		2011-12	
	N	%	N	%	N	%	N	%	N	%
<u>Undergraduate</u>										
Accounting	55	2%	61	3%	56	2%	51	2%	50	2%
Anthropology	41	2%	37	2%	43	2%	31	1%	37	2%
Art History	34	1%	40	2%	40	2%	33	1%	40	2%
Arts Management	54	2%	44	2%	53	2%	53	2%	70	3%
Astronomy	1	**	2	**						
Astrophysics									6	
Athletic Training	7	**	9	**	7	**	6	**	12	*
Biochemistry	18	*	16	*	14	*	21	*	19	*
Biology	152	7%	192	9%	186	8%	190	8%	186	8%
Business Administration	321	14%	308	14%	314	13%	313	13%	305	13%
Chemistry	35	2%	26	1%	31	1%	40	2%	19	*
Classics	15	*	10	**	16	*	17	*	8	**
Communication	285	12%	281	13%	290	12%	223	10%	230	10%
Computer Information Systems	1	**	4	**	6	**	3	**	2	**
Computer Science	14	*	15	*	17	*	27	1%	22	*
Computing in the Arts									4	**
Discovery Informatics	3	**			4	**			5	**
Early Childhood Education	47	2%	42	2%	56	2%	46	2%	37	2%
Economics	26	1%	41	2%	48	2%	46	2%	54	2%
Elementary Education	40	2%	25	1%	28	1%	38	2%	27	1%
English	82	4%	80	4%	77	3%	104	4%	81	3%
French & Francophone Studies	21	*	10	**	17	*	18	*	4	**
Geology	19	*	23	1%	29	1%	28	1%	35	1%
German	7	**	9	**	13	*	8	**	10	**
Historic Preserv/Comm Planning	43	2%	39	2%	49	2%	37	2%	41	2%
History	81	4%	53	2%	67	3%	65	3%	67	3%
Hospitality/Tourism Management	72	3%	83	4%	53	2%	79	3%	85	4%
International Business	86	4%	57	3%	67	3%	65	3%	74	3%
International Studies							1	**	15	*
Jewish Studies									2	**
Latin Amer/Caribbean Studies	7	**	6	**	5	**	5	**	6	**
Marine Biology	23	1%	24	1%	18	*	25	1%	27	1%
Mathematics	17	*	14	*	17	*	19	*	15	*
Middle Grades Education	15	*	14	*	21	*	17	*	17	*
Music	21	*	23	1%	18	*	13	*	15	*
Philosophy	17	*	19	*	23	*	19	*	23	*
Physical Education	71	3%	82	4%	78	3%	80	3%	105	4%
Physics	12	*	9	**	7	**	10	**	13	*
Political Science	149	6%	113	5%	145	6%	132	6%	117	5%
Psychology	177	8%	155	7%	177	8%	193	8%	183	8%
Religious Studies	13	*	14	*	16	*	24	1%	16	*
Science With Medicine			1	**						

*Academics*

**Degrees Awarded by Major  
2007-08 to 2011-12**

	2007-08		2008-09		2009-10		2010-11		2011-12	
	N	%	N	%	N	%	N	%	N	%
Secondary Education Cognate					19	*	28	1%	18	*
Sociology	56	2%	50	2%	51	2%	38	2%	50	2%
Spanish	60	3%	51	2%	49	2%	42	2%	31	1%
Special Education	13	*	24	1%	13	*	25	1%	24	1%
Studio Art	46	2%	56	3%	48	2%	53	2%	61	3%
Theatre	33	1%	21	*	37	2%	35	2%	30	1%
Urban Studies	7	**	6	**	4	**	10	**	11	**
Women's and Gender Studies							9	**	13	*
<b>Total</b>	<b>2,297</b>	<b>100%</b>	<b>2,189</b>	<b>100%</b>	<b>2,327</b>	<b>100%</b>	<b>2,320</b>	<b>100%</b>	<b>2,335</b>	<b>100%</b>
<b>Graduate</b>										
Accountancy	27	14%	43	23%	29	13%	23	11%	24	10%
Arts Management PBCERT			3	2%	4	2%	2	*	7	3%
Bilingual Med/Heal Care Interp PBCERT	3	2%	2	1%	2	*				
Business Administration							23	11%	28	12%
Communication	4	2%	7	4%	15	6%	13	6%	12	5%
Computer Information Systems	5	3%	3	2%	10	4%	6	3%	5	2%
Early Childhood Education	13	7%	5	3%	9	4%	19	9%	26	11%
Elementary Education	14	7%	10	5%	19	8%	24	11%	16	7%
English	11	6%	14	8%	16	7%	8	4%	10	4%
Environmental Studies	28	14%	18	10%	29	13%	18	8%	18	8%
History	15	8%	9	5%	13	6%	8	4%	8	3%
Interpreting	2	1%	1	*	4	2%	5	2%		
Languages	10	5%	6	3%	10	4%	8	4%	7	3%
Marine Biology	18	9%	13	7%	20	9%	9	4%	7	3%
Mathematics MS	9	5%	7	4%	6	3%	3	1%	8	3%
Mathematics PBCERT	1	*			2	*				
Organizational/Corporate Comm PBCERT					1	**				
Performance Arts Education			1	*	1	**			1	
Public Administration	18	9%	24	13%	20	9%	22	10%	30	13%
Science And Math For Teachers	6	3%	8	4%	9	4%	7	3%	5	2%
Service Oriented Computing PBCERT									1	
Special Education	11	6%	10	5%	7	3%	10	5%	13	5%
Teaching, Learning & Advocacy							2	*	10	4%
Urban And Regional Planning PBCERT			1	*	6	3%	6	3%	4	2%
<b>Total</b>	<b>195</b>	<b>100%</b>	<b>185</b>	<b>100%</b>	<b>231</b>	<b>100%</b>	<b>216</b>	<b>100%</b>	<b>240</b>	<b>100%</b>
<b>Grand Total</b>	<b>2,492</b>		<b>2,374</b>		<b>2,558</b>		<b>2,536</b>		<b>2,575</b>	

\*Less than one percent.

\*\*Less than one half of one percent.

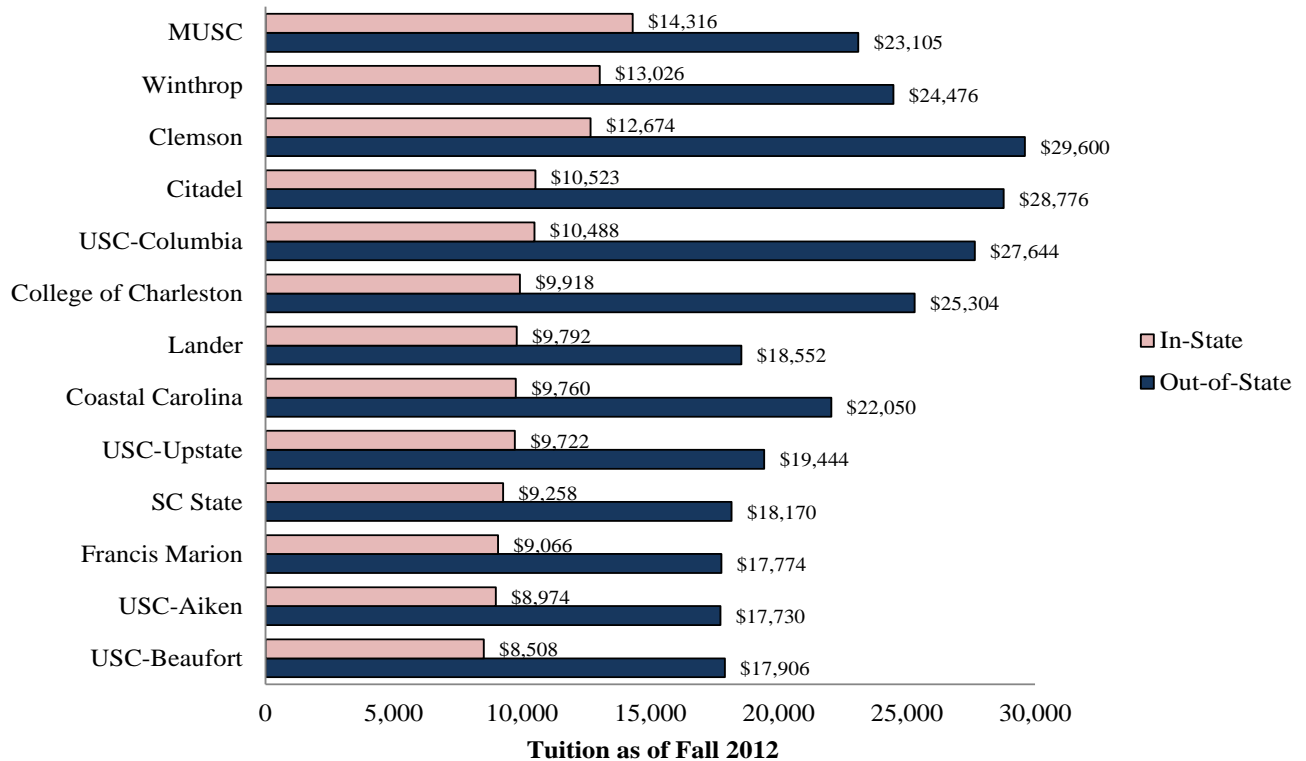
Note: Academic year starts with the Fall semester and ends with the Summer semester.



# *Financial Profiles*



**Tuition & Required Fees for Academic Year 2012-13  
S.C. Public Senior Institutions**



**College of Charleston - Academic Year Required Tuition and Fees**

	<u>Fall 2012</u>	<u>Fall 2011</u>	<u>Fall 2010</u>	<u>Fall 2009</u>	<u>Fall 2008</u>
<b>In-State</b>					
Undergraduate	\$9,918/YR	\$9,616/YR	\$10,314/YR	\$8,988/YR	\$8,400/YR
Graduate	\$10,910/YR	\$10,580/YR	\$11,346/YR	\$9,888/YR	\$8,820/YR
<b>Non-Resident</b>					
Undergraduate	\$25,304/YR	\$24,330/YR	\$23,172/YR	\$20,418/YR	\$18,732/YR
Graduate	\$27,834/YR	\$26,764/YR	\$25,490/YR	\$21,438/YR	\$18,732/YR

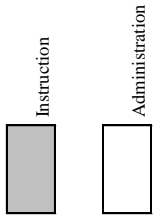
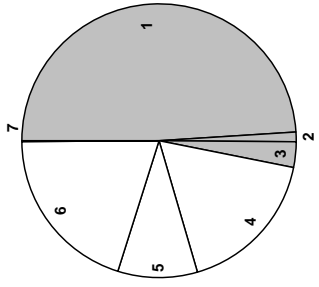
**A Comparison of Distribution of Appropriated Funds  
Based on the Commission on Higher Education Appropriations Formula (MRR)  
With Actual Expenditures of College of Charleston Appropriated Funds and Student Fees**

	2010-11		2011-12		2010-11		2011-12	
<b>CHE Formula Appropriations</b>	\$24,769,011	50.2%	\$24,191,097	49.0%	\$63,761,242	48.9%	\$66,957,654	49.4%
1. Instruction	\$385,650	0.8%	\$561,693	1.1%	\$1,322,974	1.0%	\$1,392,864	1.0%
2. Faculty Research & Development	\$1,507,730	3.1%	\$1,492,889	3.0%	\$6,050,663	4.6%	\$6,315,899	4.7%
3. Academic Support - Libraries	\$8,534,915	17.3%	\$8,564,256	17.3%	\$27,331,444	21.0%	\$29,984,076	22.1%
4. Administration*	\$4,674,749	9.5%	\$4,628,698	9.4%	\$9,836,535	7.5%	\$10,543,050	7.8%
5. Student Services	\$9,407,934	19.1%	\$9,895,722	20.0%	\$21,663,052	16.6%	\$19,688,758	14.5%
6. Plant Operation & Maintenance	\$69,865	0.1%	\$51,605	0.1%	\$427,665	0.3%	\$574,175	0.4%
7. Public Service	\$49,349,853	100.0%	\$49,385,960	100.0%	\$130,393,575	100.0%	\$135,456,476	100.0%

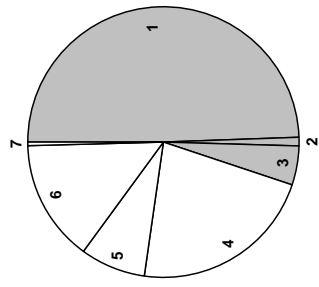
**Actual Expenditures College of Charleston**

- 1. Instruction
- 2. Faculty Research & Development
- 3. Academic Support - Libraries
- 4. Administration\*
- 5. Student Services
- 6. Plant Operation & Maintenance
- 7. Public Service

**CHE Formula Appropriations  
2011-12**



**Actual Expenditures  
2011-12**



The percentages of actual expenditures presented here, which include appropriated funds and student fees, differ from those shown on IPEDS and other reports requiring the use of audited financial statements in conformance with GASB rules. Actual scholarship expense is not shown since it is not included in the MRR calculations. Information provided on this schedule is taken from unaudited financial statements (Budgetary Statement-Schedule I of Current Unrestricted Expenditures - Operating)

\*Administration includes Academic Support-Other and Institutional Support.

**Summary of Financial Aid Awards**  
2010-2011 to 2011-2012 Fiscal Years

Name of Program	2010-11 Fiscal Year			2011-12 Fiscal Year		
	Number of Students	Total of Awards	Avg Award Per Student	Number of Students	Total of Awards	Avg Award Per Student
<b>FEDERAL</b>						
Pell Grant	2,369	9,789,508	4,132	2,567	10,225,371	3,983
SEOG	305	489,173	1,604	518	519,685	1,003
Perkins Loan	128	235,866	1,843	109	191,537	1,757
National SMART Grant	192	588,341	3,064			
Academic Competitiveness Grant Year 1	424	279,876	660			
Academic Competitiveness Grant Year 2	287	267,538	932			
Federal TEACH Grant Undergraduate	52	182,500	3,510	66	229,500	3,477
Federal TEACH Grant Graduate	16	46,500	2,906	29	75,000	2,586
Federal Work Study	67	210,395	3,140	106	332,805	3,140
Direct Loan-Subsidized	3,928	17,433,142	4,438	4,204	18,173,491	4,323
Direct Loan-Unsubsidized	4,085	17,799,927	4,357	4,510	19,299,869	4,279
Parental Loan (PLUS)	1,090	17,270,986	15,845	1,869	29,123,352	15,582
Graduate Loan (Grad PLUS)	107	776,244	7,255	93	668,888	7,192
Subtotal	13,050	\$55,580,488	\$4,259	14,071	\$78,839,498	\$5,603
<b>STATE</b>						
SC Teaching Fellows	69	379,600	5,501	65	344,264	5,296
SC Teacher's Loan	96	466,046	4,855	103	469,844	4,562
SC Teach Fellow Prof Exp				31	9,300.00	300
SC Palmetto Fellows Scholarship	508	3,596,224	7,079	505	3,601,701	7,132
SC Palmetto Fellows Enhancement	145	354,386	2,444	142	352,313	2,481
SC LIFE Scholarship	2,310	11,136,011	4,821	2,354	11,311,447	4,805
SC LIFE Enhancement	332	817,151	2,461	328	797,547	2,432
SC HOPE Scholarship	64	166,300	2,598	151	386,400	2,559
SC Need-based Grant	536	1,088,142	2,030	464	968,947	2,088
Subtotal	4,060	\$18,003,859	\$4,434	4,143	\$18,241,763	\$4,403
<b>INSTITUTIONAL</b>						
Athletic Grant-in-Aid	322	3,625,758	11,260	241	3,782,087	15,693
Assistantships:						
Graduate	128	1,162,751	9,084			
Research	46	433,982	9,434			
Teaching	43	565,400	13,149			
Abatements:						
Academic	187	2,336,592	12,495	216	3,082,080	14,269
Academic - Partial	237	892,229	3,765	259	1,485,737	5,736
Graduate	120	1,116,933	9,308	129	1,445,638	11,206
4% Waivers	4,697	6,343,014	1,350	3,120	6,135,851	1,967
Other Waivers	92	542,771	5,900	91	564,765	6,206
Institutional Scholarships	1,264	2,519,640	1,993	1,261	2,888,375	2,291
SPECTRA	91	375,052		92	357,232	
Subtotal	7,227	\$19,914,121	\$2,756	5,409	\$19,741,765	\$3,650
<b>OUTSIDE AID</b>						
Job Locator & Development	133	899,314	6,762	178	881,815	4,954
Non-Institutional Aid	659	1,890,685	2,869	732	2,176,556	2,973
Alternative Loans	352	4,462,258	12,677	391	5,271,725	13,483
Subtotal	1,144	\$7,252,257	\$22,308	1,301	\$8,330,096	\$21,410
Total	25,481	\$100,750,725	\$3,954	24,924	\$125,153,122	\$5,021

Source: Office of Financial Assistance and Veterans' Affairs

\*Assistantships no longer tracked by financial aid

\*Academic Competitiveness and National SMART Grants were discontinued



# *Facilities*





**THE MARLENE AND NATHAN ADDELESTONE LIBRARY  
LIBRARY STATISTICS  
2008 to 2012**

	2008	2009	2010	2011	2012
Library Staff:					
Professional Librarians	22	22	22	22	23
Para-Professionals	27	27	28	29	29
Student FTE's	6	5	5	5	6
Total Volumes (in volume equivalents):	762,034	779,942	797,550	817,658	832,011
Total Catalogued Book Volumes:	579,471	597,377	613,677	632,376	646,729
Units of Microtext:	879,998	880,088	880,117	880,146	880,146
Catalogued Audio and Video Recordings:	8,815	9,804	10,936	11,954	10,284
Total Bound Periodical and Serials:	79,512	80,853	82,161	83,220	83,942
Total Electronic Journals:	39,381	43,645	59,083	67,901	72,792
Total Current Serial Subscriptions					
Regularly Received:	3,075	3,283	3,067	3,250	3,255
Archives (in Linear feet):	2,303	2,469	3,853	3,953	221
Shelving Capacity (book volumes):	1,084,890	1,084,890	1,084,890	1,084,890	1,084,890
Total Operating Expenditures:	\$4,861,237	\$4,859,916	\$4,948,826	\$5,080,921	\$6,020,045
Campus Headcount Enrollment:	11,367	11,772	11,532	11,649	11,723
Expenditures Per Students:	\$428	\$413	\$429	\$436	\$514
Volumes Per Student:	67	66	69	70	71
Students Per Library Staff Member (excludes student FTE's):	232	240	231	228	225
Students Per Librarian:	517	535	524	530	510

Source: Dean of Libraries, current as of June 30 of each year.

**Residence Hall Occupancy**

**2004-05 to 2012-13**

	Occupants			Normal Capacity		
	<u>Total</u>	<u>Men</u>	<u>Women</u>	<u>Total</u>	<u>Men</u>	<u>Women</u>
Fall 2004	2778	846	1932	2770	843	1927
Spring 2005	2679	827	1852	2770	843	1927
Fall 2005	2834	885	1949	2842	886	1956
Spring 2006	2768	867	1901	2842	886	1956
Fall 2006	2840	885	1955	2840	896	1944
Spring 2007	2755	873	1882	2840	896	1944
Fall 2007	3283	1102	2181	3393	1060	2333
Spring 2008	3095	1057	2038	3393	1060	2333
Fall 2008	3260	1083	2177	3393	1060	2333
Spring 2009	3161	1059	2102	3393	1060	2333
Fall 2009	3329	1038	2291	3393	1060	2333
Spring 2010	3189	1030	2159	3393	1060	2333
Fall 2010	3184	1057	2127	3382	1119	2263
Spring 2011	2963	995	1968	3382	1119	2263
Fall 2011	3477	1154	2323	3382	1119	2263
Spring 2012	3258	1095	2163	3382	1119	2263
Fall 2012	3354	1093	2261	3382	1119	2263
Spring 2013	2993	996	1997	3382	1119	2263

Source: Director of Housing Assignments

Addition of Warren Place in Fall 2004.

Addition of George Street Apartments and Liberty Street Residence Hall in Fall 2007.

# *Index*



## 2013 Planning and Reference Fact Book Index

<u>Subject</u>	<u>Page(s)</u>
<b>Admissions</b>	
<i>Application Summary</i>	39
<i>High School Class Rank</i>	42
<i>High Schools (SC)</i>	43
<i>SAT Scores</i>	40-41
<b>Administration</b>	14-15
<b>Administrative Structure</b>	16-22
<b>Age</b>	
<i>Enrollments (by Class)</i>	55
<b>Alumni</b>	24
<b>Applications</b>	39
<b>Board of Trustees</b>	
<i>2012-2013</i>	11
<i>2013-2014</i>	12
<b>Budget</b>	
<i>Financial Aid Awards</i>	93
<i>Formula Comparison</i>	92
<i>Tuition and Fees</i>	91
<b>Concentrations (see Majors)</b>	
<b>Courses</b>	
<i>Sections Taught</i>	
<i>Graduate</i>	86
<i>Undergraduate</i>	84
<i>Student Course Load</i>	74
<i>Students per Class</i>	
<i>Graduate</i>	78
<i>Undergraduate</i>	76
<b>Credit Hours</b>	
<i>By Faculty Department</i>	30
<i>By Course Discipline</i>	31-33
<i>By School, Department and Subject</i>	34-36
<b>Cumulative GPR (see Grades)</b>	82-83
<b>Degrees</b>	
<i>Awarded (by Major)</i>	87-88
<i>Offered</i>	73
<b>Employees</b>	23
<b>Enrollments</b>	
<i>Age (by)</i>	55
<i>Class (by)</i>	51
<i>Course Level (by)</i>	
<i>Graduate</i>	81
<i>Undergraduate</i>	80
<i>Full-time</i>	52
<i>Gender (by)</i>	53
<i>Geographic (by)</i>	56-60
<i>Graduate Headcount</i>	48

## 2013 Planning and Reference Fact Book Index

<b><u>Subject</u></b>	<b><u>Page(s)</u></b>
<i>Graduate FTE</i>	50
<i>Part-time</i>	52
<i>Race (by)</i>	54
<i>Summer Sessions</i>	61
<i>Total Headcount</i>	47
<i>Total FTE</i>	49
<i>Undergraduate Headcount</i>	48
<i>Undergraduate FTE</i>	50
<b>Facilities</b>	97-98
<b>Faculty</b>	
<i>Department (by)</i>	29
<i>Gender (by)</i>	29
<i>Race (by)</i>	29
<i>Rank (by)</i>	27
<i>Salaries</i>	28
<i>Tenure (by)</i>	27, 29
<i>Terminal Degrees (%)</i>	27, 29
<b>Faculty Workload (by School and Dept.)</b>	
<b><i>Sections Taught</i></b>	
<i>Graduate</i>	86
<i>Undergraduate</i>	84-85
<b><i>Students per Class</i></b>	
<i>Graduate</i>	78
<i>Undergraduate</i>	76-77
<b><i>Total Graduate Course Enrollment</i></b>	81
<b><i>Total Undergraduate Course Enrollment</i></b>	79-80
<b>Fees</b>	91
<b>Financial Aid</b>	93
<b>Financial Information</b>	
<b><i>Comparison of Tuition and Fees, Public Senior Institutions</i></b>	91
<b><i>Formula Comparison</i></b>	92
<b><i>Tuition and Fees</i></b>	91
<b>FTE, Student</b>	
<i>Graduate</i>	50
<i>Undergraduate</i>	50
<i>Summer Sessions</i>	61
<i>Total</i>	49
<b>Freshmen</b>	
<b><i>Admissions</i></b>	39
<b><i>Graduation Rates</i></b>	68
<b><i>High School Class Rank</i></b>	42
<b><i>High Schools (S.C.)</i></b>	43
<b><i>Retention (all)</i></b>	
<i>All</i>	65,67
<i>African American only</i>	66
<b>Full-time/Part-time Enrollments</b>	52
<b>Gender</b>	
<b><i>Distribution of Students (by Class)</i></b>	53
<b><i>Enrollments (by)</i></b>	53
<b><i>Faculty</i></b>	29

## 2013 Planning and Reference Fact Book Index

<u>Subject</u>	<u>Page(s)</u>
<b>Geographic Distribution</b>	
<i>County (by)</i>	56-57
<i>Country (by)</i>	59-60
<i>High School (SC) of Entering Freshmen</i>	43
<i>South Carolina</i>	56-57
<i>State (by)</i>	58-59
<b>Goals (Institutional)</b>	10
<b>Grades</b>	
<i>Distribution (by Class)</i>	82-83
<i>Distribution (by Department)</i>	82-83
<i>Distribution (by Gender)</i>	82-83
<b>Graduate Enrollments</b>	
<i>FTE</i>	50
<i>in Graduate Courses</i>	81
<i>Headcount</i>	48
<i>Sections</i>	86
<b>Graduation</b>	
<i>Degrees Awarded by Major</i>	87-88
<i>Graduation Rates</i>	68
<b>Headcount</b>	
<i>Class (by)</i>	51
<i>Graduate</i>	48
<i>Summer Sessions</i>	61
<i>Total</i>	47
<i>Undergraduate</i>	48
<b>High Schools</b>	
<i>of Entering Freshmen</i>	43
<i>Rank in Class</i>	42
<b>In-State Students</b>	56-57
<b>Institutional Goals</b>	10
<b>International Students</b>	
<i>Enrollments</i>	56
<i>Geographic Distribution</i>	59-60
<b>Library</b>	97
<b>Majors</b>	
<i>Degrees awarded by</i>	87-88
<i>Graduate</i>	73,75
<i>Undergraduate</i>	73,75
<b>Mission Statement</b>	9
<b>Officers (Administrative)</b>	14-15
<b>Out-of-State Students</b>	
<i>Enrollments</i>	56
<i>Geographic Distribution</i>	56, 58-59
<b>Organizational Chart</b>	16-22
<b>Personnel</b>	23

## 2013 Planning and Reference Fact Book Index

<u>Subject</u>	<u>Page(s)</u>
<b>Race</b>	
<i>Distribution of Students (by Class)</i>	54
<i>Faculty</i>	29
<i>Retention (by)</i>	66
<b>Rank (Faculty)</b>	27, 29
<b>Residence Halls</b>	
<i>Occupancy Numbers</i>	98
<b>Retention</b>	
<i>Freshmen (African American only)</i>	66
<i>Freshmen (Full Time only)</i>	65, 67
<i>Graduation Rates</i>	68
<i>Transfers</i>	69-70
<b>Salaries (Faculty)</b>	28
<b>SAT Scores</b>	
<i>Average Combined</i>	40
<i>S.C. Public Colleges/Universities</i>	41
<b>Sex (see Gender)</b>	
<b>South Carolina</b>	
<i>Counties (Enrollment by)</i>	56-57
<i>Enrollments (%)</i>	56
<i>High Schools (Freshmen Enrollment by)</i>	43
<b>Statement of Purpose</b>	9
<b>Students</b>	
<i>Enrollments (see Enrollments)</i>	
<i>Geographic Distribution (see Geo. Distrib.)</i>	
<b>Summer Sessions</b>	61
<b>Tenure (Faculty)</b>	27, 29
<b>Terminal Degrees (Faculty)</b>	27, 29
<b>Test Scores</b>	
<i>Average SAT Combined</i>	40
<i>SAT/ACT Scores S.C. Public Colleges/Universities</i>	41
<b>Transfer Students (Entering)</b>	
<i>Admissions</i>	39
<i>Enrollments</i>	69
<i>Graduation Rates</i>	69
<i>Retention Rates</i>	70
<b>Tri-County Enrollments</b>	56
<b>Trustees</b>	11-12
<b>Tuition and Fees</b>	91
<b>Undergraduate Enrollments</b>	
<i>FTE</i>	50
<i>Headcount</i>	48
<i>Sections</i>	84-85
<i>in Undergraduate Courses</i>	79-80
<b>Workload (see Faculty Workload)</b>	